



Quality Products for the Transportation Industry

PARTS LIST # 12

visit our website at: www.whitingdoor.com

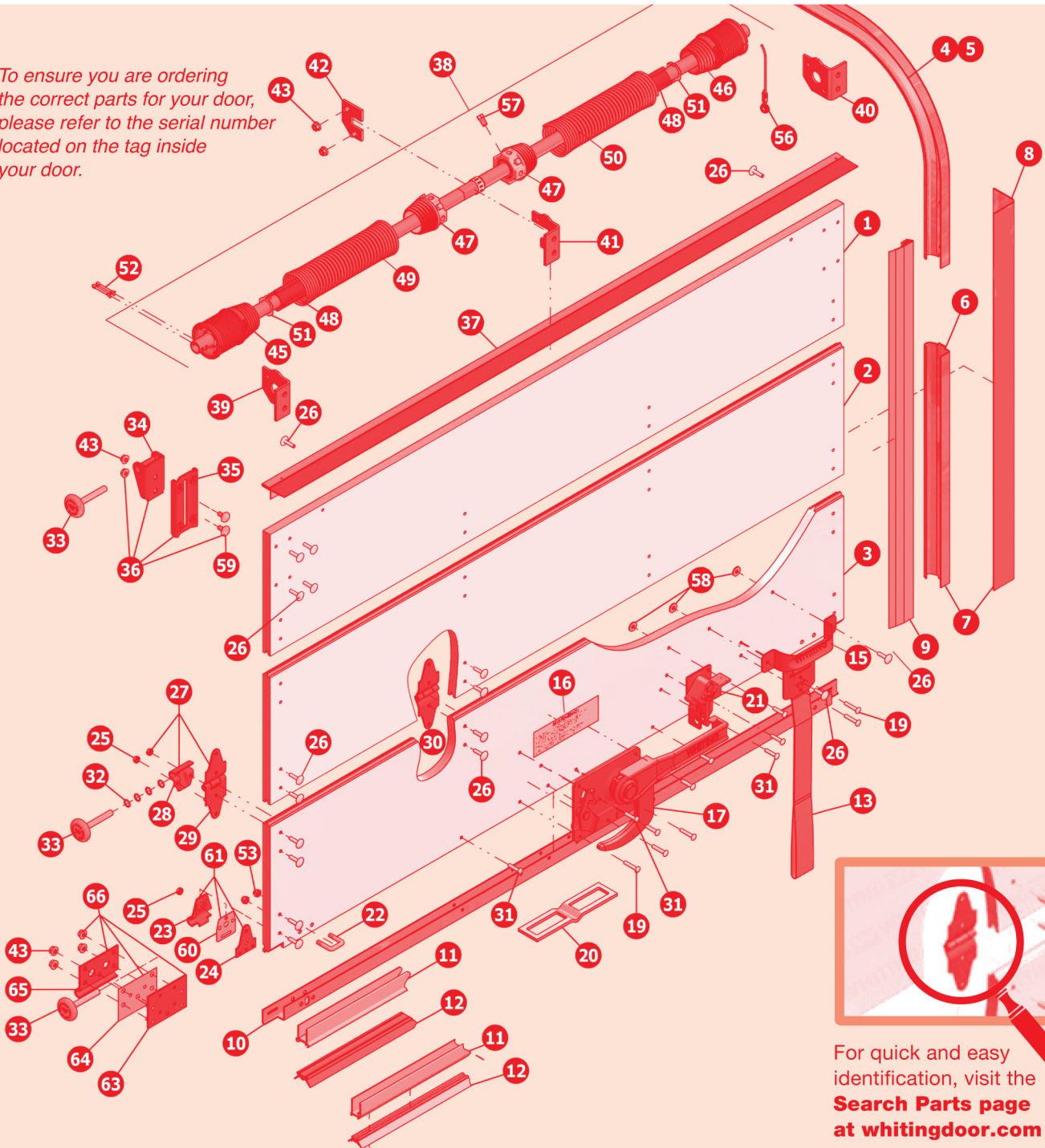
Corporate Offices:

113 Cedar Street
Akron, New York 14001
(716) 542-5427
Fax: (716) 542-5947

West Coast Offices:

301 S Milliken Avenue
Ontario, California 91761
(909) 877-0120
Fax: (909) 877-9180

To ensure you are ordering the correct parts for your door, please refer to the serial number located on the tag inside your door.



For quick and easy identification, visit the **Search Parts** page at whitingdoor.com

ROADSIDE

CURBSIDE

Table of Contents

+ *	Premium Dry Freight.....	2
+ *	Premium Aluminum-Clad.....	8
+ *	Premium Stainless Steel.....	14
*	Laminated Premium.....	18
	CargoGuard.....	22
*	PremiumPlate 1/2".....	26
*	PremiumPlate 1/4".....	30
*	Hinged Truss II.....	34
*	SHIELDseries I.....	38
+	General Purpose Dry Freight.....	42
+	General Purpose Aluminum-Clad.....	46
*	ColdSaver.....	50
*	TempGuard.....	54
	Single Wall Extruded Aluminum.....	58
	Ordering Tips.....	61

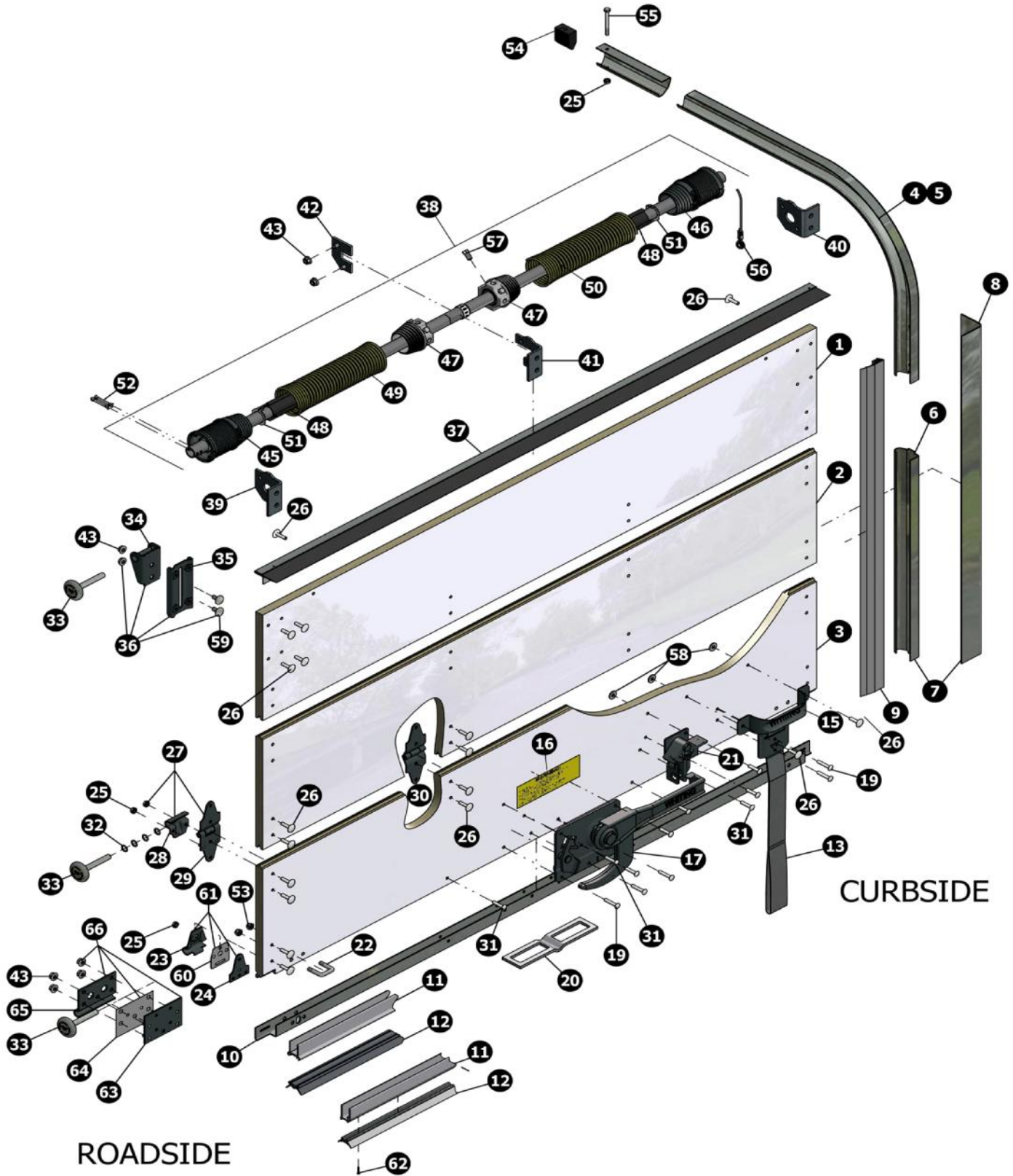
NOTE:

* Interior and exterior hardware available in stainless steel.

+ Wood surfaces of panels primed gray unless otherwise specified.

PREMIUM QUALITY™

3/4" Dry Freight Door



Visit our Search Parts page at www.whitingdoor.com.

1 241	Top Panel - 3/4" Plastic With Ship Lap Joint - Complete With Top Seal and Closure Brackets (Specify height and width)	
1 341	Top Panel - 3/4" Plastic With Tongue and Groove Joint - With Top Seal and Closure Brackets (Specify height and width)	
2 242	Intermediate Panel - 3/4" Plastic With Ship Lap Joint - Plain (Specify height and width)	
2 342	Intermediate Panel - 3/4" Plastic With Tongue and Groove Joint - Plain (Specify height and width)	
3 245-1	Bottom Panel - 3/4" Plastic With Ship Lap Joint - Bottom Seal Only With Cutout (Specify height, width and type of lock)	
3 245-3	Bottom Panel - 3/4" Plastic With Ship Lap Joint - Bottom Seal Only No Cutout (Specify height and width)	
3 246-3	Bottom Panel - 3/4" Plastic With Ship Lap Joint - Bottom Seal With Cutout Complete Less Lock (Specify height and width)	
3 248	Bottom Panel - 3/4" Plastic With Ship Lap Joint - Complete With Lock (77 Lock) and Bottom Seal (Specify height, width and type of lock)	
3 248-1	Bottom Panel - 3/4" Plastic With Ship Lap Joint - Complete With Lock (70-300 Lock) and Bottom Seal (Specify height, width and type of lock)	
3 248-2	Bottom Panel - 3/4" Plastic With Ship Lap Joint - Complete With Lock (1415 Lock) and Bottom Seal (Specify height, width and type of lock)	
3 248-3	Bottom Panel - 3/4" Plastic With Ship Lap Joint - Complete With Lock (3223 Lock) and Bottom Seal (Specify height, width and type of lock)	
3 247	Bottom Panel - 3/4" Plastic With Ship Lap Joint - U-Channel Complete With Lock (77 Lock) (Specify height, width and type of lock)	
3 247-1	Bottom Panel - 3/4" Plastic With Ship Lap Joint - U-Channel Complete With 70 Lock (Specify height, width and type of lock)	
3 246	Bottom Panel - 3/4" Plastic With Ship Lap Joint - U-Channel No Cutout Complete Less #70 Lock (Specify height and width)	
3 246-1	Bottom Panel - 3/4" Plastic With Ship Lap Joint - U-Channel No Cutout Complete Less #70 Lock (Specify height and width)	
3 244	Bottom Panel - 3/4" Plastic With Ship Lap Joint - With Cutout Only (Specify height, width and type of lock)	
3 246-2	Bottom Panel - 3/4" Plastic With Ship Lap Joint and Bottom Seal Complete Less Lock (Specify height and width)	
3 245-2	Bottom Panel - 3/4" Plastic With Steel U-Channel Only - Ship Lap Joint No Cutout (Specify height, width and type of lock)	
3 345-2	Bottom Panel - 3/4" Plastic With Steel U-Channel Only - Tongue and Groove Joint No Cutout (Specify height, width and type of lock)	
3 345-3	Bottom Panel - 3/4" Plastic With Tongue & Groove Joint Bottom Seal Only No Cutout (Specify height, width and type of lock)	
3 346-3	Bottom Panel - 3/4" Plastic With Tongue and Groove Joint - Bottom Seal With Cutout Complete Less Lock (Specify height and width)	
3 348	Bottom Panel - 3/4" Plastic With Tongue and Groove Joint - Complete With Lock (77 Lock) and (Specify height, width and type of lock) Bottom Seal	
3 348-1	Bottom Panel - 3/4" Plastic With Tongue and Groove Joint - Complete With Lock (70-300 Lock) and (Specify height, width and type of lock) Bottom Seal	
3 348-2	Bottom Panel - 3/4" Plastic With Tongue and Groove Joint - Complete With Lock (1415 Lock) and (Specify height, width and type of lock) Bottom Seal	
3 348-3	Bottom Panel - 3/4" Plastic With Tongue and Groove Joint - Complete With Lock (3223 Lock) and (Specify height, width and type of lock) Bottom Seal	

3	346	Bottom Panel - 3/4" Plastic With Tongue and Groove Joint - U-Channel Complete Less Lock (Specify height and width)
3	346-1	Bottom Panel - 3/4" Plastic With Tongue and Groove Joint - U-Channel Complete Less Lock (Specify height and width)
3	347	Bottom Panel - 3/4" Plastic With Tongue and Groove Joint - U-Channel Complete With Lock (77 Lock) (Specify height, width and type of lock)
3	347-1	Bottom Panel - 3/4" Plastic With Tongue and Groove Joint - U-Channel Complete With Lock (70 Lock) (Specify height, width and type of of lock)
3	345	Bottom Panel - 3/4" Plastic With Tongue and Groove Joint - With Cutout and Seal (Specify height, width and type of lock)
3	345-1	Bottom Panel - 3/4" Plastic With Tongue and Groove Joint - With Cutout and Seal (Specify height, width and type of lock)
3	344	Bottom Panel - 3/4" Plastic With Tongue and Groove Joint - With Cutout Only (Specify height, width and type of lock)
3	245	Bottom Panel - 3/4" Plastic with Ship Lap Joint - Bottom Seal Only With Cutout (Specify height, width and type of lock)
3	346-2	Bottom Panel - 3/4" Plastic With Tongue and Groove Joint - Bottom Seal With Cutout Complete Less Lock (Specify height, width and type of lock) and Bottom Seal
4	7459	Horizontal Track, 6-6" Radius Curbside (Specify length)
5	7458	Horizontal Track, 6-6" Radius Roadside (Specify length)
4	11-4	Track, Horizontal Only - 10" Radius Curbside (Specify length) Red
5	11-5	Track, Horizontal Only - 10" Radius Roadside (Specify length) Red
4	11-6	Track, Horizontal Only - 6" Radius Curbside (Specify length) Blue
5	11-7	Track, Horizontal Only - 6" Radius Roadside (Specify length) Blue
4	11-2	Track, Horizontal Only - 8" Radius Curbside (Specify length) Black
5	11-3	Track, Horizontal Only - 8" Radius Roadside (Specify length) Black
6	1031	Vertical Straight Track, 2" (Specify length)
7	2275-1	Vertical Track & Mounting Angle Assembly - Curbside - Dry Freight (Specify length of each and track spacing)
7	2275-2	Vertical Track & Mounting Angle Assembly - Roadside - Dry Freight (Specify length of each and track spacing)
8	2543	Mounting Angle - 2" x 2" (Specify length)
8	61	Mounting Angle - 2 3/8" x 2 3/8" (Specify Length)
9	5377	Side Seal, Snap In Style, For 1/2" Track Spacing Gray (Specify length)
9	5423	Side Seal, Snap In Style, For 5/16" Track Spacing Black and Gray (Specify length)
10	1801	Aluminum Bottom U-Channel and Seal Keeper For 3/4" Door For 70-300 Lock (Specify length and balancer)
10	18-3	Bottom U-Channel - Steel (Specify length, type of lock and balancer)
11	8174-2	Aluminum Bottom U-Channel and Seal Keeper For 3/4" Door Punched For #77 Lock #5803 Cable Anchors and #1371 Roller Brackets (Specify length)
11	8280-1	Aluminum Bottom U-Channel and Seal Keeper For 3/4" Door Punched For #77 Lock #70-13 Cable Anchors and #5600 Roller Brackets (Specify length)
11	8174-1	Aluminum Bottom U-Channel and Seal Keeper For 3/4" Door Punched For Lock #5803 Cable Anchors and #5600 Bottom Roller Brackets (Specify length)

11	8280-2	Aluminum Bottom U-Channel and Seal Keeper For 3/4" Door Standard Punched For #77 Lock #70-13 Cable Anchors and #1371 Roller Brackets (Specify length)
12	1676	Bottom Seal (Specify length)
12	5735	Bottom Seal (Specify length)
13	9723	Pull Down Strap (For Doors up to 96")
13	9723-1	Pull Down Strap (For Doors over 96")
15	1715	Grab Handle
16	232323	"Do Not Move" Decal
17	5682	#77 Type Lock with Fallaway Cam, No Handle Keeper - Dry Freight door
17	3223	#77 Type Lock with Inside Release Handle, Less Keeper - Dry Freight Door
17	77	Outside Cam Lock, Standard, No Handle Keeper
17	77-1	Outside Offset Cam Lock, No Handle Keeper
17	70-300	Recessed Cam Lock (For doors with bottom seal)
17	70	Recessed Cam Lock (For doors without bottom seal)
17	1415	Slam Lock Assembly With Guide Pin, "L" Handle Hudson Cylinder
17	75	Surface Mounted Cam Lock (For dry freight doors)
19	10-1002-9	Rivet - Coated (1/4 x 1 5/16) 1/2 DHD
19	10-1002-49	Rivet - Stainless Steel - (1/4 x 1 9/32) 1/2 DHD
20	2804	Latch Plate
20	216	Latch Plate
21	7535-1	#77 Type Lock Keeper For Inside Release - Dry Freight Door
21	7515	Handle Keeper For #77 Style Locks
22	5803	Cable Anchor
22	10-1004-1	Clevis Pin - (5/16 x 1")
22	10-1009-7	Cotter Pin - (1/8 x 3/4")
22	70-13	U-Bolt, 1 1/4" (Standard)
23	1021	Bottom Roller Shaft Cover
24	1370	Bottom Roller Stud Plate
25	10-1022-1	Self Locking Nut (1/4-20)
26	10-1002-3	Rivet - Coated (1/4 x 1) 3/4 DHD
26	10-1002-23	Rivet - Stainless Steel - (1/4 x 1 1/32) 3/4 DHD
27	1209	Roller Hinge Complete
28	1208	Roller Hinge Cover
29	1207	Roller Hinge
30	15	Center Hinge
31	10-1002-11	Rivet - Coated (1/4 x 1 1/8) - 1/2 DHD
31	10-1002-45	Rivet - Stainless Steel - (1/4 x 1 5/32) 1/2 DHD
32	6	Spacer Washer - Roller Shaft - 7/16"
33	2996	2" Steel Roller, with 3" Shaft
33	2996-2	2" Steel Roller with 3" Stainless Shaft
33	2996-3	2" Steel Roller, with 5" Shaft

33	3228	2" Track Roller, Nylon 3" Shaft
33	3228-3	2" Track Roller, Nylon, 3" Stainless Shaft
33	3228-1	2" Track Roller, Nylon, Sealed 3" Shaft
34	6943	Heavy Duty Top Slide, Bracket Only
35	1264	Top Closure Base With Nuts and Bolts
36	6944	Top Closure Bracket, Complete
37	4032	Top Seal Assembly (Specify length)
38	2376	Balancer Assembly - Double Cable (Specify shaft length and spring size)
39	2524	Balancer Bracket - Roadside - (For use with 2376 balancer)
40	2523	Balancer Bracket - Curbside - (For use with 2376 balancer)
41	2525	Balancer Bracket - Center - (For use with 2376 balancer)
42	2526	Clamp Assembly With Studs
43	10-1063-1	Self Locking Nut (5/16-18)
44	2528	Shaft For #2376 Balancer (Specify length)
45	2547	Cable Drum and Bearing Assembly - Roadside (Stamped 2901) - (For use with 2376 balancer)
46	2548	Cable Drum and Bearing Assembly - Curbside (Stamped 2902) - (For use with 2376 balancer)
47	2518COM	Winding Cone (For use with 2376 Balancer)
48	2471	Spring Spacer - (Cut To Relaxed Spring Length Plus 4 1/4") (Specify length)
49	2704	Torsion Spring - 2 3/16" Inside Diameter - Roadside - Left Hand Wound (Specify wire size and length) - (For use with 2376 balancer)
50	2705	Torsion Spring - 2 3/16" Inside Diameter - Curbside - Right Hand Wound (Specify wire size and length) - (For use with 2376 balancer)
51	2522	Thrust Washer
52	10-1009-8	Cotter Pin - (3/16 x 1 1/2)
53	10-1033-2	Torque Nut (5/16-18)
54	83	Track Stop Bumper
55	10-1010-3	Track Stop Bolt 1/4 - 20 x 2 1/2"
56	1-4	Cable - Beige - 130" - 5/16" Eye Stainless Steel (Doors 96" to 119")
56	1-11	Cable - Black - 115" - 5/16" Eye Stainless Steel (Doors up to 96")
57	2699	Set Screw - (3/8 - 16 x 5/8")
58	10-1006-1	Washer - (1/4 x 3/4")
59	2370	Carriage Bolt (5/16"-18 x 5/8")
60	5726	Bracket, Bottom Wear Plate - Stainless Steel - For Doors With Bottom Seal
61	1371	Complete Bottom Bracket With Cover
62	10-1068-1	Drive Screw (13 x 3/4")
63	5509	Stud Plate
64	5504	Wear Plate
65	5502	Bottom Roller Clamp
66	5600	Bottom Roller Bracket Assembly



Akron and Whiting together, we're on the map

In 1953, a customer asked T.C. Whiting, owner of a small garage door manufacturing company, if he and his sons Lauren and Don could fit his truck body with a garage door.

That simple request started what is known today as Whiting Door Manufacturing Corp., World leader of the truck and trailer door industry. The company has grown throughout the years to include four factory locations across the United States, with over 500 employees.

Still headquartered in Akron, the company today utilizes over 500,000 sq. ft., housing offices, manufacturing, tool and die shop, warehouse and shipping facilities. In addition to its U.S. locations, the company has licensee affiliates in Argentina, Australia, Brazil, Canada, Chili, Columbia, England, France, Israel, Japan, Mexico, New Zealand, Puerto Rico, South Africa, Thailand and Turkey – all manufacturing under the Whiting name.

Whiting is also a leader in two-panel swing doors for trucks and trailers. These doors are also manufactured in Akron giving Whiting a sales opportunity with every truck and trailer produced throughout the world.

In addition, Whiting's fast-growing Custom Laminated Panel division produces a wide variety of specialty panel products for Rail, Marine, Architectural and Industrial applications.

Local employees, building innovative and quality products, have put Whiting and Akron, New York on the map.



Quality Products for the Transportation Industry

Corporate Offices:

113 Cedar Street
Akron, New York 14001
Phone: (716) 542-5427
Fax: (716) 542-5947

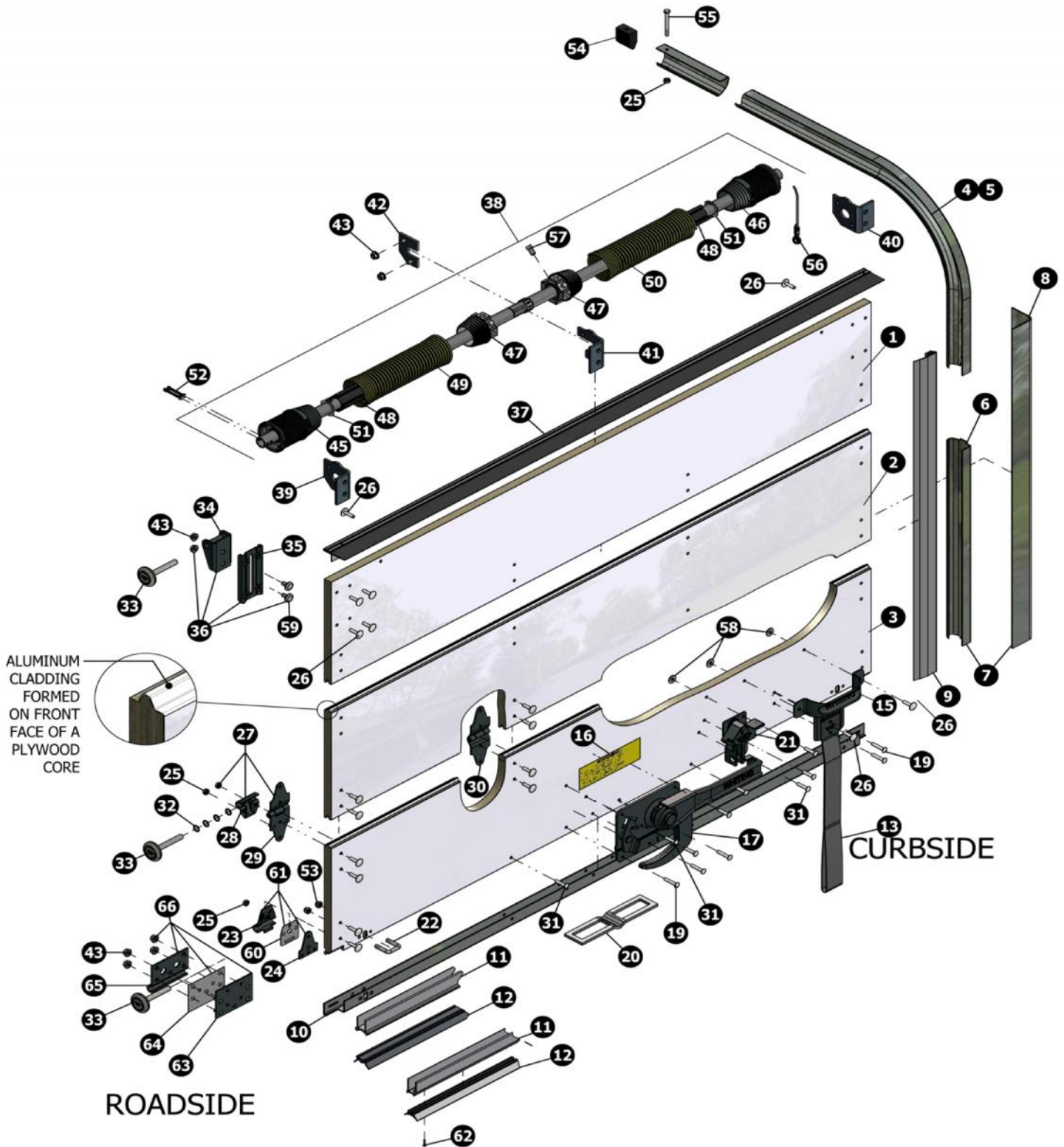
West Coast Offices:

301 S Milliken Avenue
Ontario, California 91761
Phone: (909) 877-0120
Fax: (909) 877-9180

e-mail: info@whitingdoor.com
Visit us online at www.whitingdoor.com

PREMIUM QUALITY™

Aluminum-Clad 3/4" Dry Freight Door



Visit our Search Parts page at www.whitingdoor.com.

Item	Part No.	Description	3/4" Premium Aluminum-Clad
1	251	Top Panel Complete - #4032 Top Seal, #1264 Brackets - Ship Lap (Specify Height and Width)	
1	351	Top Panel Complete - #4032 Top Seal, #1264 Brackets - Tongue & Groove (Specify Height and Width)	
2	252	Intermediate Panel - Ship Lap (Specify Height and Width)	
2	352	Intermediate Panel - Tongue & Groove (Specify Height and Width)	
3	255-1	Bottom Panel - With #1801 Aluminum Channel, #1676 Seal & Cutout For #70-300 Lock-Ship Lap (Specify Height and Width)	
3	355-1	Bottom Panel - With #1801 Aluminum Channel, #1676 Seal & Cutout For #70-300 Lock - Tongue & Groove (Specify Height and Width)	
3	256-3	Bottom Panel - With #1801 Aluminum Channel, #1676 Seal, With Hardware Only & Cutout For #70-300 Lock-Ship Lap (Specify Height, Width, Cable Anchor, Bracket)	
3	356-3	Bottom Panel - With #1801 Aluminum Channel, #1676 Seal, With Hardware Only & Cutout For #70-300 Lock-Tongue & Groove (Specify Height, Width, Cable Anchor, Bracket)	
3	258-1	Bottom Panel - With #1801 Aluminum Channel, #1676 Seal, With Hardware, #70-300 Lock Ship Lap (Specify Height, Width, Cable Anchor, Bracket)	
3	358-1	Bottom Panel - With #1801 Aluminum Channel, #1676 Seal, With Hardware, #70-300 Lock Tongue & Groove (Specify Height, Width, Cable Anchor, Bracket)	
3	256	Bottom Panel - With #18-3 Steel Channel - With Hardware Only - For #77 Lock-Ship Lap (Specify Height, Width, Cable Anchor, Bracket)	
3	356	Bottom Panel - With #18-3 Steel Channel - With Hardware Only - For #77 Lock-Tongue & Groove (Specify Height, Width, Cable Anchor, Bracket)	
3	255	Bottom Panel - With #18-3 Steel Channel & Cutout For #70 Lock-Ship Lap (Specify Height and Width)	
3	355	Bottom Panel - With #18-3 Steel Channel & Cutout For #70 Lock-Tongue & Groove (Specify Height and Width)	
3	255-2	Bottom Panel - With #18-3 Steel Channel For #77 Lock- Ship Lap (Specify Height and Width)	
3	355-2	Bottom Panel - With #18-3 Steel Channel For #77 Lock-Tongue & Groove (Specify Height and Width)	
3	356-1	Bottom Panel - With #18-3 Steel Channel - With Hardware Only & Cutout For #70 Lock - Tongue & Groove (Specify Height, Width, Cable Anchor, Bracket)	
3	256-1	Bottom Panel - With #18-3 Steel Channel - With Hardware Only & Cutout For #70 Lock-Ship Lap (Specify Height, Width, Cable Anchor, Bracket)	
3	257-1	Bottom Panel - With #18-3 Steel Channel - With Hardware, #70 Lock-Ship Lap (Specify Height, Width, Cable Anchor, Bracket)	
3	357-1	Bottom Panel - With #18-3 Steel Channel - With Hardware, #70 Lock-Tongue & Groove (Specify Height Width, Cable Anchor, Bracket)	
3	257	Bottom Panel - With #18-3 Steel Channel - With Hardware, #77 Lock-Ship Lap (Specify Height, Width, Height, Cable Anchor, Bracket)	
3	357	Bottom Panel - With #18-3 Steel Channel - With Hardware, #77 Lock-Tongue & Groove (Specify Width, Cable Anchor, Bracket)	
3	255-3	Bottom Panel - With #8280/8174 Aluminum Channel, #5735 Seal For #77 Lock-Ship Lap (Specify Height and Width)	
3	355-3	Bottom Panel - With #8280/8174 Aluminum Channel, #5735 Seal For #77 Lock-Tongue & Groove (Specify Height and Width)	
3	256-2	Bottom Panel - With #8280/8174 Aluminum Channel, #5735 Seal, With Hardware Only-For #77 Lock Ship Lap (Specify Height, Width, Cable Anchor, Bracket)	
3	356-2	Bottom Panel - With #8280/8174 Aluminum Channel, #5735 Seal, With Hardware Only-For #77 Lock Tongue & Groove (Specify Height, Width, Cable Anchor, Bracket)	
3	258-3	Bottom Panel - With #8280/8174 Aluminum Channel, #5735 Seal, With Hardware,#3223 Lock Ship Lap (Specify Height, Width, Cable Anchor, Bracket)	

Item	Part No.	Description	3/4" Premium Aluminum-Clad
3	358-3	Bottom Panel - With #8280/8174 Aluminum Channel, #5735 Seal, With Hardware,#3223 Lock Tongue & Groove (Specify Height, Width, Cable Anchor, Bracket)	
3	258	Bottom Panel - With #8280/8174 Aluminum Channel, #5735 Seal, With Hardware,#77 Lock-Ship Lap (Specify Height, Width, Cable Anchor, Bracket)	
3	358	Bottom Panel - With #8280/8174 Aluminum Channel, #5735 Seal, With Hardware,#77 Lock Tongue & Groove (Specify Height, Width, Cable Anchor, Bracket)	
3	254	Bottom Panel - With Cutout For #70 Type Lock-Ship Lap (Specify Height and Width)	
3	354	Bottom Panel - With Cutout For #70 Type Lock-Tongue & Groove (Specify Height and Width)	
4	11-4	2" Horizontal Track - 10" Radius - 90 Degree - Curbside (Specify Length)	
5	11-5	2" Horizontal Track - 10" Radius - 90 Degree - Roadside (Specify Length)	
4	11-6	2" Horizontal Track - 6" Radius - 90 Degree - Curbside (Specify Length)	
5	11-7	2" Horizontal Track - 6" Radius - 90 Degree - Roadside (Specify Length)	
4	7459	2" Horizontal Track - 6-6" Radius - 90 Degree - Curbside (Specify Length)	
5	7458	2" Horizontal Track - 6-6" Radius - 90 Degree - Roadside (Specify Length)	
4	11-2	2" Horizontal Track - 8" Radius - 90 Degree - Curbside (Specify Length)	
5	11-3	2" Horizontal Track - 8" Radius - 90 Degree - Roadside (Specify Length)	
6	1031	2" Vertical Straight Track - Road or Curbside (Specify Length)	
7	2275-1	2" Vertical Track & Angle Assembly - Curbside (Specify Type, Length Of Each, Track Spacing)	
7	2275-2	2" Vertical Track & Angle Assembly - Roadside (Specify Type, Length Of Each, Track Spacing)	
8	2543	Mounting Angle Standard 2 X 2" Legs (Specify Length)	
8	61	Mounting Angle Standard 2-3/8 X 2-3/8" Legs With Mounting Holes (Specify Length)	
9	5423	Side Seal Vinyl Drive-In for 5/16" Track Spacing (Specify Length)	
9	5377	Side Seal Vinyl Drive-In for 1/2" Track Spacing (Specify Length)	
10	1801	Bottom Channel - Aluminum (Specify Cable Anchor, Bracket, Lock, Balancer)	
10	18-3	Bottom Channel - Steel (Specify Cable Anchor, Bracket, Lock, Balancer)	
11	8174-2	Bottom Channel - Aluminum - For #5803 Anchor, #1371 Bracket, #77 Lock (Specify Length)	
11	8174-1	Bottom Channel - Aluminum - For #5803 Anchor, #5600 Bracket, #77 Lock (Specify Length)	
11	8280-2	Bottom Channel - Aluminum - For #70-13 Anchor, #1371 Bracket, #77 Lock (Specify Length)	
11	8280-1	Bottom Channel - Aluminum - For #70-13 Anchor, #5600 Bracket, #77 Lock (Specify Length)	
12	1676	Bottom Seal For #1801 Aluminum Channel (Specify Length)	
12	5735	Bottom Seal For #8280/8174 Aluminum Channel (Specify Length)	
13	9723BLK	Pull Down Strap - Top Coated Black Enamel (For Doors up to 96")	
13	9723-1BLK	Pull Down Strap - Top Coated Black Enamel (For Doors over 96")	
15	1715BLK	Grab Handle - Top Coated Black Enamel	
16	232323	"Do Not Move" Decal - Premasked	
17	3223BLK	Lock Assembly Only-Outside Cam-Inside Release(Without #7535-1 Keeper) Top Coated Black Enamel	
17	77BLK	Lock Assembly Only - Standard Outside Cam (Without #7515 Keeper) Top Coated Black Enamel	
17	77-1BLK	Lock Assembly Only - Standard Outside Offset Cam (Without #7515 Keeper) Top Coated Black Enamel	
17	70-300	Lock Assembly - Recessed Cam For Use With #1801 Aluminum Channel (Cutout Required)	
17	70	Lock Assembly - Recessed Cam For Use With #18-3 Steel Channel (Cutout Required)	
17	1415	Lock Assembly - Slam Type With Guide Pin	

17	75	Lock Assembly - Surface Mounted
17	5682	Lock Assembly Only - Fall-Away Cam (Without #7515 Keeper)
19	10-1002-49	Rivet, Stainless Steel 1/4 X 1-9/32 X 1/2" Head (For Strap & Lock Assembly)
19	10-1002-9	Rivet, Steel 1/4 X 1-5/16 X 1/2" Head (For Strap & Lock Assembly)
20	2804	Latch Plate - Standard (For All Non Slam Type Lock Assemblies)
20	216	Latch Plate (For #1415 Slam Type Locks Only)
21	7535-1BLK	Handle Keeper Assembly (For #3223 Lock Assembly) Top Coated Black Enamel
21	7515BLK	Handle Keeper Assembly (For #77 & #5682 Lock Assemblies) Top Coated Black Enamel
22	70-13	Cable Anchor - Standard U-Bolt
22	5803BLK	Cable Anchor - Surface Mounted (Clevis & Cotter Pins Required) Top Coated Black Enamel
22	10-1004-1	Clevis Pin (For #5803 Cable Anchor)
22	10-1009-7	Cotter Pin (For #5803 Cable Anchor)
23	1021	Bottom Roller Cover (#1371 Bracket Assembly)
24	1370	Bottom Roller Bracket (#1371 Bracket Assembly)
25	10-1022-1	Keq Nut 1/4-20 Thread (For #1371, #1207, #10-1010-3)
26	10-1002-23	Rivet, Stainless Steel 1/4 X 1-1/32 X 3/4" Head (Used On Hinges, Brackets & Grab Handle)
26	10-1002-3	Rivet, Steel 1/4 X 1 X 3/4" Head (Used On Hinges, Brackets & Grab Handle)
27	1209	Roller End Hinge Assembly - Complete (#1207, #1208, #10-1022-1)
28	1208	Roller End Hinge Cover
29	1207	Roller End Hinge
30	15	Center Hinge
31	10-1002-45	Rivet, Stainless Steel 1/4 X 1-5/32 X 1/2" Head (Used On Bottom channel, Lock & Keeper)
31	10-1002-11	Rivet, Steel 1/4 X 1-1/8 X 1/2" Head (Used On Bottom channel, Lock & Keeper)
32	6	Spacer Washer (For First & Last Panel Joint Rollers)
33	3228-6	2" Nylon Roller - Sealed
33	3228-3	2" Nylon Roller - Stainless Steel 3" Shaft
33	3228	2" Nylon Roller - Standard
33	2996	2" Steel Roller - 3" Shaft
33	2996-3	2" Steel Roller - 5" Shaft
33	2996-2	2" Steel Roller - Stainless Steel 3" Shaft
34	6943	Top Closure Slide
35	1264	Top Closure Base With Nuts & Bolts
36	6944	Top Closure Assembly Complete (#1264 & #6943)
37	4032	Top Seal - Reinforced Rubber Rolled In Steel Jacket
38	2376	Balancer Assembly - Complete (Without Brackets & Clamp)
39	2524	Balancer Bracket - Roadside - (For use with 2376 balancer)
40	2523	Balancer Bracket - Curbside - (For use with 2376 balancer)
41	2525	Balancer Bracket - Center - (For use with 2376 balancer)
42	2526	Balancer Clamp - Center
43	10-1063-1	Self Locking Nut 5/16-18 Thread (For #2526, #1264, #5600)

Item	Part No.	Description	3/4" Premium Aluminum-Clad
44	2528	Balancer Shaft (Specify Length Usually Door Width)	
45	2547	Cable Drum and Bearing Assembly - Roadside (Stamped 2901) - (For use with 2376 balancer)	
46	2548	Cable Drum and Bearing Assembly - Curbside (Stamped 2902) - (For use with 2376 balancer)	
47	2518COM	Winding Cone (For use with 2376 Balancer)	
48	2471	Spring Spacer (Relaxed Spring Length + 4-1/4")	
49	2704	Torsion Spring - 2 3/16" Inside Diameter - Roadside - Left Hand Wound (Specify wire size and length) (For use with 2376 balancer)	
50	2705	Torsion Spring - 2 3/16" Inside Diameter - Curbside - Right Hand Wound (Specify wire size and length) - (For use with 2376 balancer)	
51	2522	Thrust Washer	
52	10-1009-8	Cotter Pin 3/16 X 1-1/2" (For #2376)	
53	10-1033-2	Self Locking Nut 5/16-18 Thread (For #70-13)	
54	83	2" Rubber Track Stop Bumper	
55	10-1010-3	Track Bolt 1/4-20 Thread X 2-1/2"	
56	1-11	Cable Assembly Stainless Steel 5/16" Eye - 110" (For Doors Up To 96" High)	
56	1-4	Cable Assembly Stainless Steel 5/16" Eye - 130" (For Doors 96 To 119" High)	
57	2699	Set Screw 3/8-16 Thread X 5/8" (For #2518)	
58	10-1006-1	Washer 1/4 X 3/4" (Used On Inside Bottom Panel To Hold Rivets)	
59	2370	Bolt 5/16-18 Thread X 5/8" (For #1264)	
60	5726	Wear Plate (On #1371 For Doors With Bottom Seal)	
61	1371	Bottom Bracket Assembly - Complete (#1370, #1021, #5726, #10-1022-1)	
62	10-1068-1	Drive Screw #13 X 3/4" (For Bottom Seal)	
63	5509	Bottom Roller Bracket (#5600 Bracket Assembly)	
64	5504	Wear Plate (For #5600)	
65	5502	Bottom Roller Cover (#5600 Bracket Assembly)	
66	5600	Bottom Bracket Assembly - Complete (#5502, #5509, #5504, #10-1063-1)	

Looking for a part? Go to www.whitingdoor.com to search by part name, number or door type.

Search Parts by Name or Description

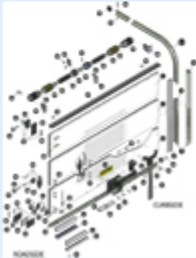
Part Name or Number:

Match all words Match any words

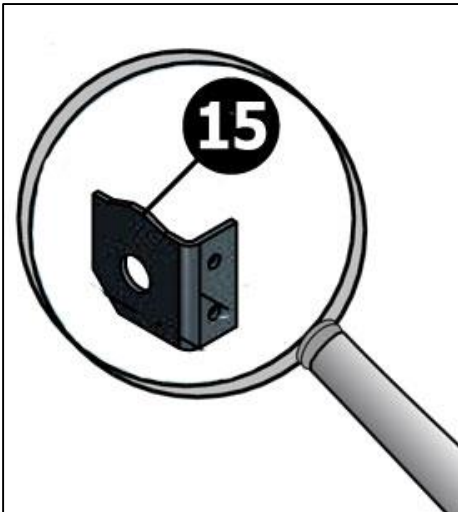
Search Parts by Door Type

Please select a door type for an exploded drawing of parts.

Plywood Core Dry Freight Doors Premium Dry Freight Premium Alum-Clad Premium Stainless Steel Laminated Premium CargoGuard General Purpose Dry Freight General Purpose Alum-Clad	Non-wood Core Dry Freight Doors Hinged Truss II PremiumPlate SHIELDseries I
Specialty Doors Single Wall Extruded Aluminum	Insulated Doors ColdSaver TempGuard
	Swing Doors Swing Door Parts

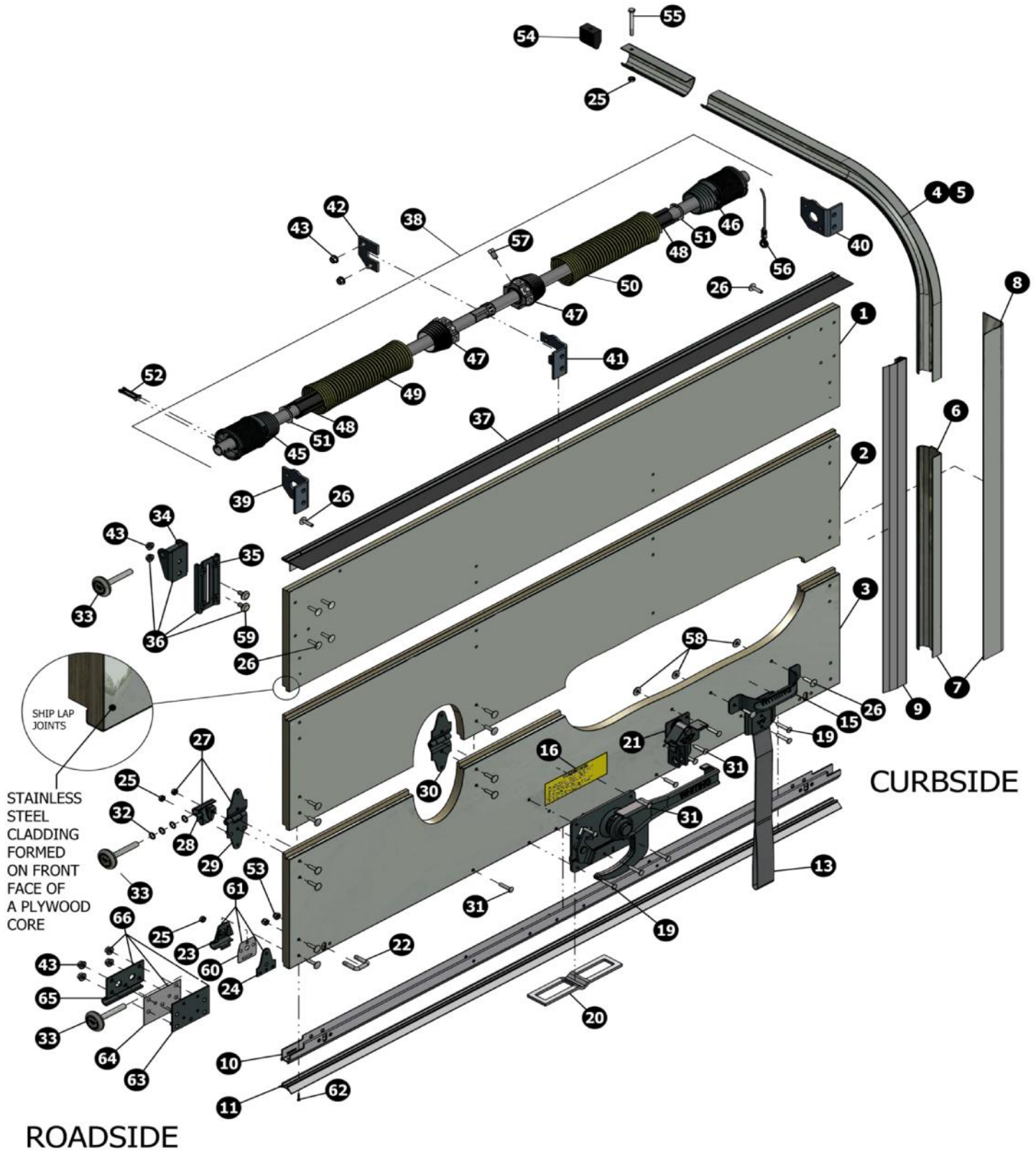


Check out our exploded door drawings. We make it easy for you to zoom into specific doors and parts!



PREMIUM QUALITY™

Stainless Steel 3/4" Dry Freight Door



Visit our Search Parts page at www.whitingdoor.com.

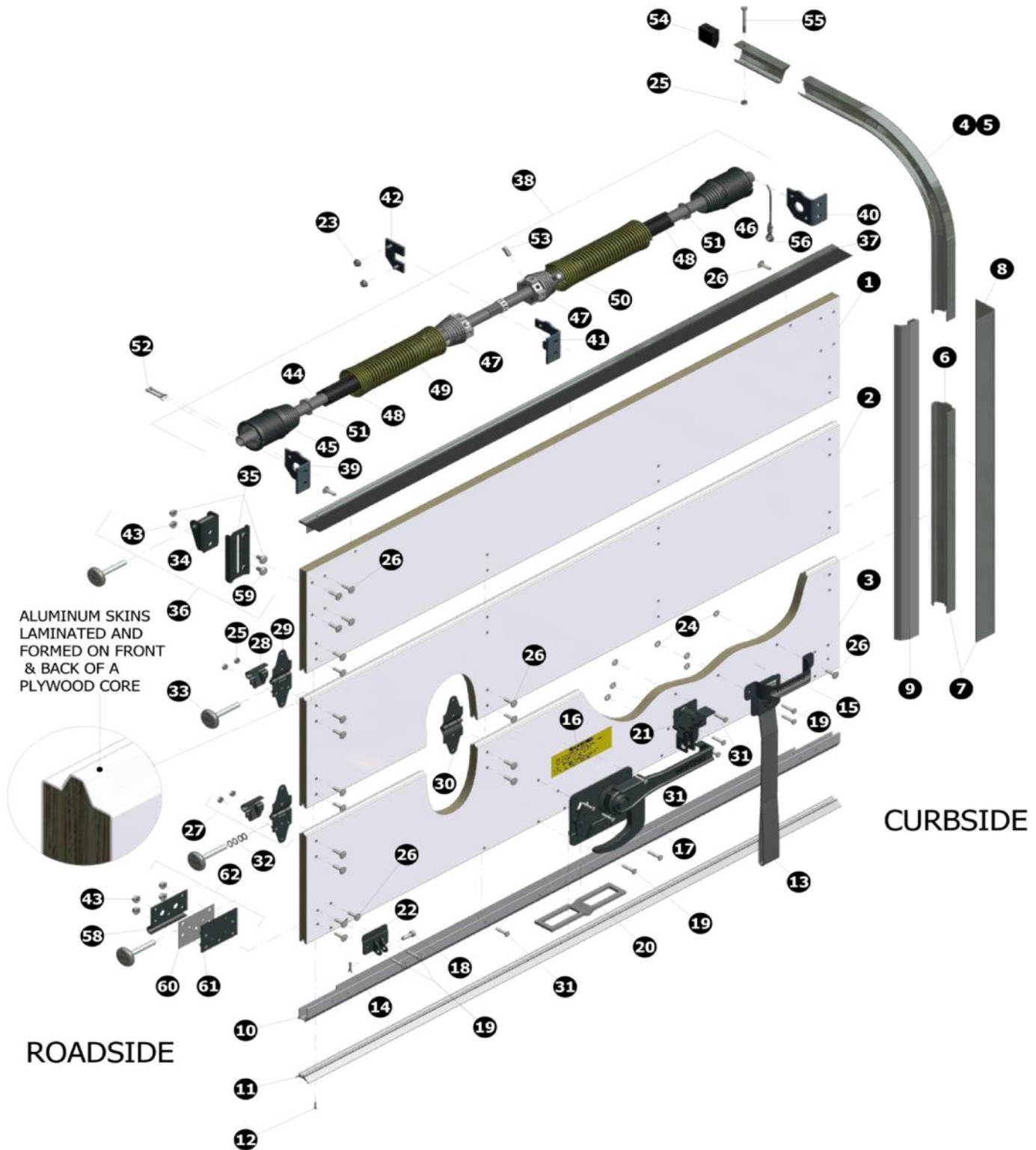
Item Part No.	Description	Premium Stainless Steel
1 451	Top Panel Complete - #4032 Top Seal, #1264 Brackets - Ship Lap (Specify Height and Width)	
2 452	Intermediate Panel - Ship Lap (Specify Height and Width)	
3 455-2	Bottom Panel - With #18-3 Steel Channel For #77 Lock-Ship Lap (Specify Height and Width)	
3 456	Bottom Panel - With #18-3 Steel Channel - With Hardware Only - For #77 Lock-Ship Lap (Specify Height, Width, Cable Anchor, Bracket)	
3 457-1	Bottom Panel - With #18-3 Steel Channel - With Hardware, #70 Lock-Ship Lap (Specify Height, Width, Cable Anchor, Bracket)	
3 457	Bottom Panel - With #18-3 Steel Channel - With Hardware, #77 Lock-Ship Lap (Specify Height, Width, Cable Anchor, Bracket)	
3 455-3	Bottom Panel - With #8280/8174 Aluminum Channel, #5735 Seal For #77 Lock-Ship Lap (Specify Height and Width)	
3 456-2	Bottom Panel - With #8280/8174 Aluminum Channel, #5735 Seal, With Hardware Only - For #77 Lock-Ship Lap (Specify Height, Width, Cable Anchor, Bracket)	
3 458-3	Bottom Panel - With #8280/8174 Aluminum Channel, #5735 Seal, With Hardware,#3223 Lock-Ship Lap (Specify Height, Width, Cable Anchor, Bracket)	
3 458	Bottom Panel - With #8280/8174 Aluminum Channel, #5735 Seal, With Hardware,#77 Lock-Ship Lap (Specify Height, Width, Cable Anchor, Bracket)	
4 11-4	2" Horizontal Track - 10" Radius - 90 Degree - Curbside (Specify Length)	
5 11-5	2" Horizontal Track - 10" Radius - 90 Degree - Roadside (Specify Length)	
4 11-6	2" Horizontal Track - 6" Radius - 90 Degree - Curbside (Specify Length)	
5 11-7	2" Horizontal Track - 6" Radius - 90 Degree - Roadside (Specify Length)	
4 7459	2" Horizontal Track - 6-6" Radius - 90 Degree - Curbside (Specify Length)	
5 7458	2" Horizontal Track - 6-6" Radius - 90 Degree - Roadside (Specify Length)	
4 11-2	2" Horizontal Track - 8" Radius - 90 Degree - Curbside (Specify Length)	
5 11-3	2" Horizontal Track - 8" Radius - 90 Degree - Roadside (Specify Length)	
6 1031	2" Vertical Straight Track - Road or Curbside (Specify Length)	
7 2275-1	2" Vertical Track & Angle Assembly - Curbside (Specify Type, Length Of Each, Track Spacing)	
7 2275-2	2" Vertical Track & Angle Assembly - Roadside (Specify Type, Length Of Each, Track Spacing)	
8 2543	Mounting Angle Standard 2 X 2" Legs (Specify Length)	
8 61	Mounting Angle Standard 2-3/8 X 2-3/8" Legs With Mounting Holes (Specify Length)	
9 5377	Side Seal Vinyl Drive-In for 1/2" Track Spacing (Specify Length)	
9 5423	Side Seal Vinyl Drive-In for 5/16" Track Spacing (Specify Length)	
10 1801	Bottom Channel - Aluminum (Specify Cable Anchor, Bracket, Lock, Balancer)	
10 18-3	Bottom Channel - Steel (Specify Cable Anchor, Bracket, Lock, Balancer)	
11 8174-2	Bottom Channel - Aluminum - For #5803 Anchor, #1371 Bracket, #77 Lock (Specify Length)	
11 8174-1	Bottom Channel - Aluminum - For #5803 Anchor, #5600 Bracket, #77 Lock (Specify Length)	
11 8280-2	Bottom Channel - Aluminum - For #70-13 Anchor, #1371 Bracket, #77 Lock (Specify Length)	
11 8280-1	Bottom Channel - Aluminum - For #70-13 Anchor, #5600 Bracket, #77 Lock (Specify Length)	
12 1676	Bottom Seal For #1801 Aluminum Channel (Specify Length)	
12 5735	Bottom Seal For #8280/8174 Aluminum Channel (Specify Length)	
13 9723BLK	Pull Down Strap - Top Coated Black Enamel (For Doors up to 96")	
13 9723-1BLK	Pull Down Strap - Top Coated Black Enamel (For Doors over 96")	
15 1715BLK	Grab Handle - Top Coated Black Enamel	

Item Part No.	Description	Premium Stainless Steel
16 232323	"Do Not Move" Decal - Premasked	
17 5682BLK	Lock Assembly Only - Fall - Away Cam (Without #7515 Keeper) - Top Coated Black Enamel	
17 3223BLK	Lock Assembly Only-Outside Cam-Inside Release (Without #7535-1 Keeper) Top Coated Black Enamel	
17 77BLK	Lock Assembly Only - Standard Outside Cam (Without #7515 Keeper) Top Coated Black Enamel	
17 77-1BLK	Lock Assembly Only - Standard Outside Offset Cam (Without #7515 Keeper) Top Coated Black Enamel	
17 70-300	Lock Assembly - Recessed Cam For Use With #1801 Aluminum Channel (Cutout Required)	
17 70	Lock Assembly - Recessed Cam For Use With #18-3 Steel Channel (Cutout Required)	
17 1415	Lock Assembly - Slam Type With Guide Pin	
17 75	Lock Assembly - Surface Mounted	
19 10-1002-49	Rivet, Stainless Steel 1/4 X 1-9/32 X 1/2" Head (For Strap & Lock Assembly)	
20 216	Latch Plate (For #1415 Slam Type Locks Only)	
20 2804	Latch Plate - Standard (For All Non Slam Type Lock Assemblies)	
21 7535-1BLK	Handle Keeper Assembly (For #3223 Lock Assembly) - Top Coated Black Enamel	
21 7515BLK	Handle Keeper Assembly (For #77 & #5682 Lock Assemblies) - Top Coated Black Enamel	
22 70-13	Cable Anchor - Standard U-Bolt	
22 5803	Cable Anchor - Surface Mounted (Clevis & Cotter Pins Required)	
22 10-1004-1	Clevis Pin (For #5803 Cable Anchor)	
22 10-1009-7	Cotter Pin (For #5803 Cable Anchor)	
23 1021	Bottom Roller Cover (#1371 Bracket Assembly)	
24 1370	Bottom Roller Bracket (#1371 Bracket Assembly)	
25 10-1022-1	Kep Nut 1/4-20 Thread (For #1371, #1207, #10-1010-3)	
26 10-1002-23	Rivet, Stainless Steel 1/4 X 1-1/32 X 3/4" Head (Used On Hinges, Brackets & Grab Handle)	
27 1209	Roller End Hinge Assembly-Complete (#1207, #1208, #10-1022-1)	
28 1208	Roller End Hinge Cover	
29 1207	Roller End Hinge	
30 15	Center Hinge	
31 10-1002-45	Rivet, Stainless Steel 1/4 X 1-5/32 X 1/2" Head (Used On Bottom channel, Lock & Keeper)	
32 6	Spacer Washer (For First & Last Panel Joint Rollers)	
33 3228-6	2" Nylon Roller - Sealed	
33 3228-3	2" Nylon Roller - Stainless Steel 3" Shaft	
33 3228	2" Nylon Roller - Standard	
33 2996	2" Steel Roller - 3" Shaft	
33 2996-3	2" Steel Roller - 5" Shaft	
33 2996-2	2" Steel Roller - Stainless Steel 3" Shaft	
34 6943	Top Closure Slide	
35 1264	Top Closure Base With Nuts & Bolts	
36 6944	Top Closure Assembly Complete (#1264 & #6943)	
37 4032	Top Seal - Reinforced Rubber Rolled In Steel Jacket	
38 2376	Balancer Assembly - Complete (Without Brackets & Clamp)	
39 2524	Balancer Bracket - Roadside - (For use with 2376 balancer)	

Item Part No.	Description	Premium Stainless Steel
40 2523	Balancer Bracket - Curbside - (For use with 2376 balancer)	
41 2525	Balancer Bracket - Center - (For use with 2376 balancer)	
42 2526	Balancer Clamp - Center	
43 10-1063-1	Self Locking Nut 5/16-18 Thread (For #2526, #1264, #5600)	
44 2528	Balancer Shaft (Specify Length Usually Door Width)	
45 2547	Cable Drum and Bearing Assembly - Roadside (Stamped 2901) - (For use with 2376 balancer)	
46 2548	Cable Drum and Bearing Assembly - Curbside (Stamped 2902) - (For use with 2376 balancer)	
47 2518COM	Winding Cone (For use with 2376 Balancer)	
48 2471	Spring Spacer (Relaxed Spring Length + 4-1/4")	
49 2704	Torsion Spring - 2 3/16" Inside Diameter - Roadside - Left Hand Wound (Specify wire size and length) (For use with 2376 balancer)	
50 2705	Torsion Spring - 2 3/16" Inside Diameter - Curbside - Right Hand Wound (Specify wire size and length) (For use with 2376 balancer)	
51 2522	Thrust Washer	
52 10-1009-8	Cotter Pin 3/16 X 1-1/2" (For #2376)	
53 10-1033-2	Self Locking Nut 5/16-18 Thread (For #70-13)	
54 83	2" Rubber Track Stop Bumper	
55 10-1010-3	Track Stop Bolt 1/4-20 X 2-1/2"	
56 1-11	Cable Assembly Stainless Steel 5/16 Eye - 110" (For Doors Up To 96" High)	
56 1-4	Cable Assembly Stainless Steel 5/16 Eye - 130" (For Doors 96 To 119" High)	
57 2699	Set Screw 3/8-16 Thread X 5/8" (For #2518)	
58 10-1006-9	Washer Stainless Steel 1/4 X 3/4" (Used On Inside Bottom Panel To Hold Rivets)	
59 2370	Bolt 5/16-18 Thread X 5/8" (For #1264)	
60 5726	Wear Plate (On #1371 For Doors With Bottom Seal)	
61 1371	Bottom Bracket Assembly - Complete (#1370, #1021, #5726, #10-1022-1)	
62 10-1068-1	Drive Screw #13 X 3/4" (For Bottom Seal)	
63 5509	Bottom Roller Bracket (#5600 Bracket Assembly)	
64 5504	Wear Plate (For #5600)	
65 5502	Bottom Roller Cover (#5600 Bracket Assembly)	
66 5600	Bottom Bracket Assembly-Complete (#5502, #5509, #5504, #10-1063-1)	

Laminated Premium™

3/4" Dry Freight Door



Item Part No.	Description	Laminated Premium
1 7509	Top Panel Complete - #4032 Top Seal, #1264 Brackets - Tongue & Groove Laminated Aluminum Both Sides (Specify Height and Width)	
2 7507	Intermediate Panel -Tongue & Groove Laminated Aluminum Both Sides, 11-5/8" (Specify Width)	
2 7508	Intermediate Panel - Tongue & Groove Laminated Aluminum Both Sides, 15" (Specify Width)	
3 7505-2	Bottom Panel - With #8174 Aluminum Channel, #5735 Seal Only - For #77 Lock Tongue & Groove Laminated Aluminum Both Sides (Specify Height, Width)	
3 7505-1	Bottom Panel - With #8174 Aluminum Channel, #5735 Seal, With Hardware Only - For #77 Lock Tongue & Groove Laminated Aluminum Both Sides (Specify Height, Width)	
3 7505	Bottom Panel - With #8174 Aluminum Channel, #5735 Seal, With Hardware - #77 Lock Tongue & Groove Laminated Aluminum Both Sides (Specify Height, Width)	
4 11-4	2" Horizontal Track - 10" Radius - 90 Degree - Curbside (Specify Length)	
5 11-5	2" Horizontal Track - 10" Radius - 90 Degree - Roadside (Specify Length)	
4 11-6	2" Horizontal Track - 6" Radius - 90 Degree - Curbside (Specify Length)	
5 11-7	2" Horizontal Track - 6" Radius - 90 Degree - Roadside (Specify Length)	
4 11-2	2" Horizontal Track - 8" Radius - 90 Degree - Curbside (Specify Length)	
5 11-3	2" Horizontal Track - 8" Radius - 90 Degree - Roadside (Specify Length)	
4 7459	2" Horizontal Track - 6-6" Radius - 90 Degree - Curbside (Specify Length)	
5 7458	2" Horizontal Track - 6-6" Radius - 90 Degree - Roadside (Specify Length)	
6 1031	2" Vertical Straight Track - Road or Curbside (Specify Length)	
7 2275-1	Vertical Track & Angle Assembly - Curbside (Specify Angle, Angle Length, Vertical Length)	
7 2275-2	Vertical Track & Angle Assembly - Roadside (Specify Angle, Angle Length, Vertical Length)	
8 2543	Mounting Angle Standard 2" X 2" Legs (Specify Length)	
8 61	Mounting Angle Standard 2-3/8" X 2-3/8" Legs With Mounting Holes (Specify Length)	
9 5377	Side Seal Vinyl Drive-In for 1/2" Track Spacing (Specify Length)	
9 5423	Side Seal Vinyl Drive-In for 5/16" Track Spacing (Specify Length)	
10 8174-1	Aluminum U-Channel, Mill Finish (Specify Length, Balancer Type)	
11 5735	Bottom Seal, Multi Leg (Specify Length)	
12 10-1068-1	Drive Screw #13 X 3/4" (For Bottom Seal)	
13 9723	Pull Down Strap (For Doors up to 96")	
13 9723-1	Pull Down Strap (For Doors over 96")	
14 10-1009-7	Cotter Pin 1/8 X 3/4" (For #5803 Cable Anchor)	
15 1715BLK	Grab Handle - Top Coated Black Enamel	
16 232323	"Do Not Move" Decal - Premasked	
17 77BLK	Lock Assembly Only - Standard Outside Cam (Without #7515 Keeper) Top Coated Black Enamel	
17 77-1BLK	Lock Assembly Only- tandard Outside Offset Cam (Without #7515 Keeper) Top Coated Black Enamel	
18 10-1004-1	Clevis Pin 5/16 X 1" (For #5803 Cable Anchor)	
19 10-1002-49	Rivet, Stainless Steel 1/4 X 1-9/32 X 1/2" Head (For Strap & Lock Assembly)	
20 2804	Latch Plate - Standard	
21 7515BLK	Handle Keeper Assembly (For #77 & #77-1 Lock Assemblies) Top Coated Black Enamel	
22 5803BLK	Cable Anchor - Top Coated Black Enamel	
23 10-1063-1	Self Locking Nut 5/16-18 Thread (For #2526, #1264, #5600)	
24 10-1006-9	Stainless Steel Washer (For Through Rivets Bottom Panel,Bottom Bracket)	

Item Part No.	Description	Laminated Premium
25	10-1022-1	Kep Nut 1/4-20 (For Hinges, Track Bolt)
26	10-1002-23	Rivet, Stainless Steel 1/4 X 1-1/32 X 3/4" Head (Used On Hinges, Brackets & Grab Handle)
27	1209	Roller End Hinge Assembly - Complete (#1207,#1208, #10-1022-1)
27	1209ASM	Roller End Hinge Assembly - Complete - Assembled (#1207,#1208, #10-1022-1)
28	1208	Roller Hinge Cover
29	1207	Roller End Hinge
30	15	Center Hinge
31	10-1002-45	Rivet, Stainless Steel 1/4 X 1-5/32 X 1/2" Head (For Lock Bottom Channel)
32	6	Spacer Washer (For First & Last Panel Joint Rollers)
33	3228-6	2" Nylon Roller - Sealed
33	3228-3	2" Nylon Roller - Stainless Steel 3" Shaft
33	3228	2" Nylon Roller - Standard
33	2996	2" Steel Roller - 3" Shaft
33	2996-3	2" Steel Roller - 5" Shaft
33	2996-2	2" Steel Roller - Stainless Steel 3" Shaft
34	6943	Top Closure Bracket
35	1264	Top Closure Base With Nuts & Bolts
36	6944	Top Closure Assembly Complete (#1264 & #6943)
37	4032	Top Seal - Standard
38	2376	Balancer Assembly - Complete (Without Brackets & Clamp)
38	7176	Balancer Assembly - Complete (Without Brackets & Clamp)
39	2524	Balancer Bracket - Roadside - (For use with 2376 balancer)
40	2523	Balancer Bracket - Curbside - (For use with 2376 balancer)
39	7205	Balancer Bracket for #7176 Balancer - Roadside - (For use with 7176 balancer)
40	7206	Balancer Bracket for #7176 Balancer - Curbside - (For use with 7176 balancer)
41	2525	Balancer Bracket - Center - (For use with 2376 balancer)
41	7207	Balancer Bracket - Center (For #7176)
42	2526	Balancer Clamp - Center
44	2528	Balancer Shaft (Specify Length Usually Door Width)
45	2547	Cable Drum and Bearing Assembly - Roadside (Stamped 2901) - (For use with 2376 balancer)
46	2548	Cable Drum and Bearing Assembly - Curbside (Stamped 2902) - (For use with 2376 balancer)
45	7097COM	Cable Drum and Bearing Assembly - Roadside - (For use with 7176 balancer)
46	7096COM	Cable Drum and Bearing Assembly - Curbside - (For use with 7176 balancer)
47	2518COM	Winding Cone (For use with 2376 Balancer)
47	7549COM	Winding Cone - Curbside - (For use with 7176 balancer)
48	2471	Spring Spacer (Relaxed Spring Length + 4-1/4")
49	2704	Torsion Spring - 2 3/16" Inside Diameter - Roadside - Left Hand Wound (Specify wire size and length) - (For use with 2376 balancer)
50	2705	Torsion Spring - 2 3/16" Inside Diameter - Curbside - Right Hand Wound (Specify wire size and length) - (For use with 2376 balancer)

Item Part No.	Description	Laminated Premium
49 2712	Torsion Spring - 2 5/8" Inside Diameter - Roadside - Left Hand Wound (Specify wire size and length) - (For use with 7176 balancer)	
50 2713	Torsion Spring - 2 5/8" Inside Diameter - Curbside - Right Hand Wound (Specify wire size and length) - (For use with 7176 balancer)	
51 2522	Thrust Washer	
52 10-1009-8	Cotter Pin 3/16 X 1-1/2" (For #2376)	
53 2699	2699 Set Screw 3/8-16 X 5/8"□	
54 83	Track Stop Rubber	
55 10-1010-3	Track Stop Bolt 1/4-20 X 2-1/2"	
56 1-11	Cable Assembly Stainless Steel 5/16" Eye - 110" (For Doors Up To 96" High)	
56 1-4	Cable Assembly Stainless Steel 5/16" Eye - 130" (For Doors 96 To 119" High)	
58 5502	Bottom Roller Bracket Cover	
59 2370	Bolt 5/16-18 Thread X 5/8" (For #1264)	
60 5504	Bottom Roller Wear Plate	
61 5509	Bottom Roller Bracket	
62 5600	Bottom Roller Bracket Assembly (#5509, #5504, #5502)	

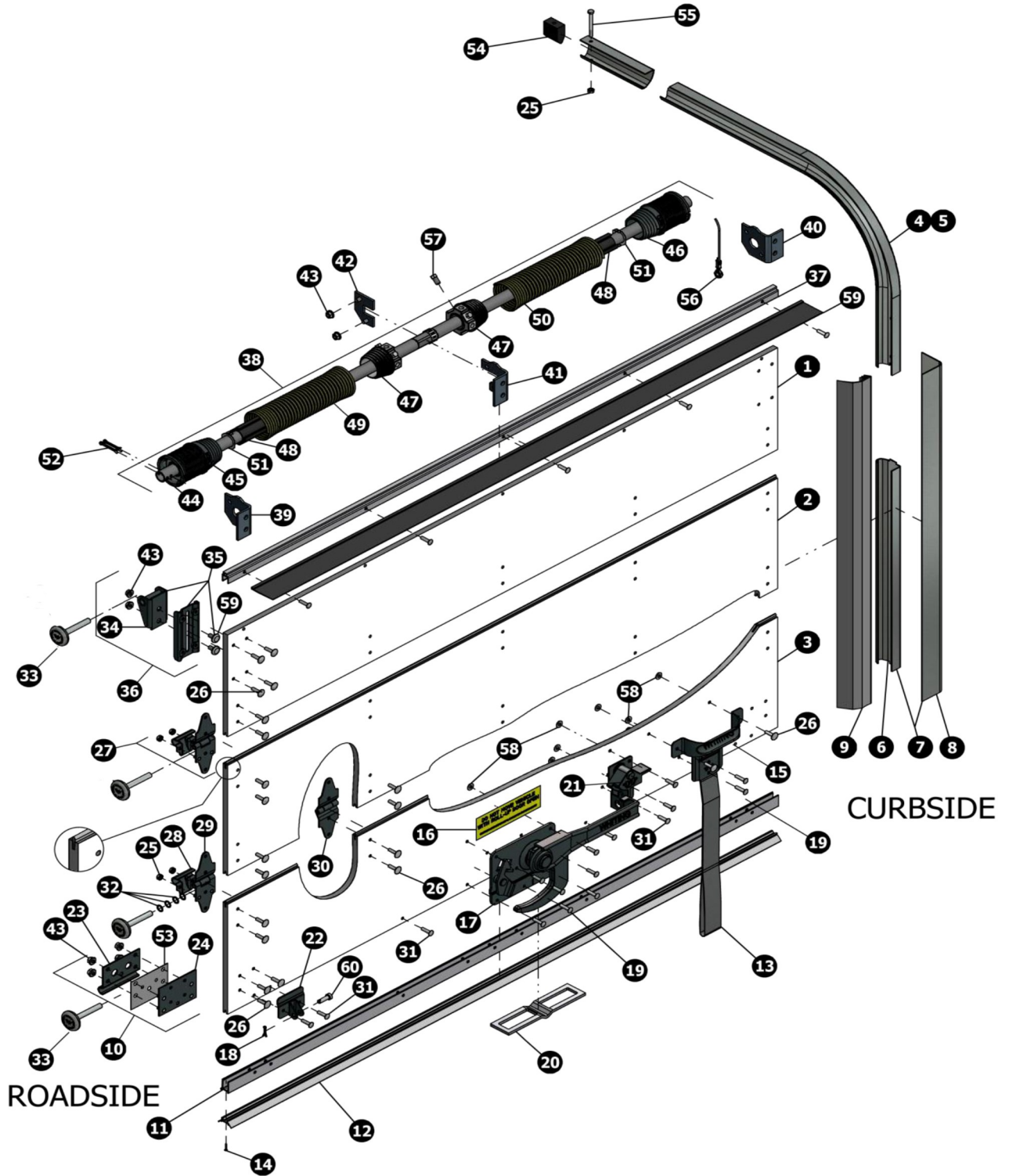
Item	Part No.	Description	CargoGuard
1	6885	Top Panel Complete - #4032 Top Seal, #1264 Brackets - Tongue & Groove Laminated Aluminum Both Sides, Less Cargo Guards (Specify Height and Width)	
2	6884	Intermediate Panel - Tongue & Groove Laminated Aluminum Both Sides, Less Cargo Guards (Specify Height and Width)	
3	232323	"Do Not Move" Decal - Premasked	
4	6882	Bottom Panel - With #8174 Aluminum Channel, #5735 Seal, With Hardware, #77 Lock - Tongue & Groove Laminated Aluminum Both Sides, Less Cargo Guards (Specify Height and Width)	
4	6882-1	Bottom Panel - With #8174 Aluminum Channel, #5735 Seal, With Hardware Only - For #77 Lock Tongue & Groove Laminated Aluminum Both Sides, Less Cargo Guards (Specify Height and Width)	
4	6882-2	Bottom Panel - With #8174 Aluminum Channel, #5735 Seal Only - For #77 Lock - Tongue & Groove Laminated Aluminum Both Sides, Less Cargo Guards (Specify Height and Width)	
5	7176	Balancer Assembly - Complete (Without Brackets & Clamp)	
5	2376	Balancer Assembly - Complete (Without Brackets & Clamp)	
6	2712	Torsion Spring 2-5/8 " Inside Diameter - Roadside - Left Hand Wound (Specify wire size and length) (Use with 7176 balancer)	
7	2713	Torsion Spring 2-5/8" Inside Diameter - Curbside - Right Hand Wound (Specify wire size and length) (Use with 7176 balancer)	
6	2704	Torsion Spring 2-3/16" Inside Diameter - Roadside - Left Hand Wound (Specify wire size and length) (Use with 2376 balancer)	
7	2705	Torsion Spring 2-3/16" Inside Diameter - Curbside - Right Hand Wound (Specify wire size and length) (Use with 2376 balancer)	
8	2522	Thrust Washer	
9	2528	Balancer Shaft (Specify Length Usually Door Width)	
10	7097COM	Cable Drum and Bearing Assembly - Roadside - (For use with 7176 balancer)	
11	7096COM	Cable Drum and Bearing Assembly - Curbside - (For use with 7176 balancer)	
10	2547	Cable Drum and Bearing Assembly - Roadside (Stamped 2901) - (For use with 2376 balancer)	
11	2548	Cable Drum and Bearing Assembly - Curbside (Stamped 2902) - (For use with 2376 balancer)	
12	2699	Set Screw - (3/8 - 16 x 5/8")	
13	7549COM	Winding Cone - Curbside - (For use with 7176 balancer)	
13	2518COM	Winding Cone (For use with 2376 Balancer)	
14	7232	Spring Spacer for #7176 Balancer - (For use with 7176 balancer)	
15	7206	Balancer Bracket for #7176 Balancer - Curbside - (For use with 7176 balancer)	
16	7205	Balancer Bracket for #7176 Balancer - Roadside - (For use with 7176 balancer)	
15	2523	Balancer Bracket - Curbside - (For use with 2376 balancer)	
16	2524	Balancer Bracket - Roadside - (For use with 2376 balancer)	
17	7207	Balancer Bracket - Center (For #7176)	
17	2525	Balancer Bracket - Center - (For use with 2376 balancer)	
18	2526	Balancer Bracket Clamp	
19	10-1063-1	Self Locking Nut 5/16-18 Thread (For #2526, #1264, #5600)	
19	10-1063-4	Self Locking Nut Stainless Steel 5/16-18 Thread (For #10-1003-150 Bottom Bracket)	
20	10-1009-8	Cotter Pin 3/16 X 1-1/2" (For #7176)	
21	1-11	Cable Assembly Stainless Steel 5/16" Eye - 110" (For Doors Up To 96" High)	
21	1-4	Cable Assembly Stainless Steel 5/16" Eye - 130" (For Doors 96 To 119" High)	

Item	Part No.	Description	CargoGuard
22	5735	Bottom Seal, Multi Leg (Specify Length)	
23	5803BLK	Cable Anchor - Top Coated Black Enamel	
24	10-1004-1	Clevis Pin 5/16 X 1" (For #5803 Cable Anchor)	
25	10-1009-7	Cotter Pin 1/8 X 3/4" (For #5803 Cable Anchor)	
26	10-1002-49	Rivet, Stainless Steel 1/4 X 1-9/32 X 1/2" Head (For Strap & Lock Assembly)	
27	10-1002-23	Rivet, Stainless Steel 1/4 X 1-1/32 X 3/4" Head (Used On Hinges, Brackets & Grab Handle)	
28	2804	Latch Plate - Standard	
29	77BLK	Lock Assembly Only-Standard Outside Cam (Without #7515 Keeper) Top Coated Black Enamel	
29	77-1BLK	Lock Assembly Only-Standard Outside Offset Cam (Without #7515 Keeper) Top Coated Black Enamel	
30	7515BLK	Handle Keeper Assembly (For #77 & #77-1 Lock Assemblies) Top Coated Black Enamel	
31	1715BLK	Grab Handle - Top Coated Black Enamel	
32	10-1006-9	Stainless Steel Washer (For Through Rivets Bottom Panel,Bottom Bracket)	
33	9161	Brush Side Seal Assembly (#5833-3 Brush Seal, #9160 Seal Retainer - Specify Length)	
34	6787	Vertical Track & Angle Assembly - Curbside (Specify Angle, Angle Length, Vertical Length)	
34	6786	Vertical Track & Angle Assembly - Roadside (Specify Angle, Angle Length, Vertical Length)	
35	11-4	2" Horizontal Track - 10" Radius - 90 Degree - Curbside (Specify Length)	
35	11-5	2" Horizontal Track - 10" Radius - 90 Degree - Roadside (Specify Length)	
35	11-6	2" Horizontal Track - 6" Radius - 90 Degree - Curbside (Specify Length)	
35	11-7	2" Horizontal Track - 6" Radius - 90 Degree - Roadside (Specify Length)	
35	7459	2" Horizontal Track - 6-6" Radius - 90 Degree - Curbside (Specify Length)	
35	7458	2" Horizontal Track - 6-6" Radius - 90 Degree - Roadside (Specify Length)	
35	11-2	2" Horizontal Track - 8" Radius - 90 Degree - Curbside (Specify Length)	
35	11-3	2" Horizontal Track - 8" Radius - 90 Degree - Roadside (Specify Length)	
36	10-1003-120	Step Bolt Stainless Steel 1/4-20 X 1-1/8" (For Top Panel End Guards)	
37	7489	Top Brush Assembly (#5843 Brush Seal, #7489 Seal Retainer - Specify Length)	
37	4032	Top Seal - Standard	
38	10-1022-1	Keps Nut 1/4-20 (For Hinges, Track Bolt)	
39	83	Track Stop Rubber	
40	10-1010-3	Track Stop Bolt 1/4-20 x 2-1/2"	
41	1264	Top Closure Base With Nuts & Bolts	
42	6943	Top Closure Bracket	
43	6944	Top Closure Assembly Complete (#1264 & #6943)	
44	8174-1	Aluminum U-Channel, Mill Finish (Specify Length, Balancer Type)	
45	10-1002-45	Rivet, Stainless Steel 1/4 X 1-5/32 X 1/2" Head (For Lock, Bottom Channel)	
46	9723BLK	Pull Down Strap - Top Coated Black Enamel (For Doors up to 96")	
46	9723-1BLK	Pull Down Strap - Top Coated Black Enamel (For Doors over 96")	
47	2915-1	Center Hinge	
48	8070	Roller End Hinge (Must Be Used With 6842 Cover Only)	
49	6842	Roller Hinge Cover (Must Be Used With 8070 Hinge Only)	
50	8071	Roller End Hinge Assembly - Complete (#8070, #6842, #10-1022-1)	

Item	Part No.	Description	CargoGuard
51	6	Spacer Washer (For First & Last Panel Joint Rollers)	
52	6771	Bottom Roller Bracket Cover (Replacement Only For Old Style Bottom Bracket)	
53	5502	Bottom Roller Bracket Cover	
53	2264-1	Bottom Roller Bracket Wear Plate (Replacement Only For Old Style Bottom Bracket)	
54	5509	Bottom Roller Bracket	
54	6770	Bottom Roller Bracket (Replacement Only For Old Style Installation)	
55	6799	Center Guard (For Intermediate and Top Panels - Specify Panel Height)	
56	6721	End Guard - Curbside (For Intermediate Panels - Specify Panel Height)	
57	6725	End Guard - Roadside (For Intermediate Panels - Specify Panel Height)	
58	6847	End Guard - Roadside (For Top Panel - Specify Panel Height)	
59	6848	End Guard - Curbside (For Top Panel - Specify Panel Height)	
60	6853	Center Guard (For Bottom Panel - Specify Panel Height)	
61	6850	Center Lock Guard (For Bottom Panel - Specify Panel Height)	
62	6852	End Guard - Curbside (For Bottom Panel - Specify Panel Height)	
63	6851	End Guard - Roadside (For Bottom Panel - Specify Panel Height)	
64	10-1002-68	Rivet, Stainless Steel 1/4 X 1-1/32 X 1/2" Head (For Top Seal Standard)	
64	10-1002-45	Rivet, Stainless Steel 1/4 X 5/32 X 1/2" Head (For Top Seal Brush)	
65	3228-1	2" Nylon Roller - Shielded	
65	3228-3	2" Nylon Roller - Stainless Steel 3" Shaft	
65	3228	2" Nylon Roller - Standard	
65	2996	2" Steel Roller - 3" Shaft	
65	2996-3	2" Steel Roller - 5" Shaft	
65	2996-2	2" Steel Roller - Stainless Steel 3" Shaft	
66	7550COM	Winding Cone With Screws - Roadside	
67	10-1002-23	Rivet, Stainless Steel 1/4 X 1-1/32 X 3/4" Head (Used On Hinges, Brackets & Grab Handle)	
68	5600	Bottom Roller Bracket Assembly (#5509, #5504, #5502)	
69	10-1003-150	Step Bolt Stainless Steel 1/4-20 X 1-3/8" (For Bottom Roller Bracket)	
70	10-1095-1	Hex Nut 1/4-20 (used on end guards)	
71	10-1095-3	Hex Nut 1/4-20 (used on center guards)	

PremiumPlate™

1/2" Composite Dry Freight Door



Item Part No.	Description	1/2" PremiumPlate
1 16090-1	Top Panel Complete - #16095 Seal Jacket, #7552 Vinyl Seal, #1264 Brackets	
1 16090-2	Top Panel Complete - #16095 Seal Jacket, #7552 Vinyl Seal, #1264 Brackets	
2 16089-1	Intermediate - 11-1/2" High	
2 16089-2	Intermediate - 15-1/2" High	
3 16093-1	Bottom Panel - Complete With Lock - 11-1/2" High	
3 16093-2	Bottom Panel - Complete With Lock - 15-1/2" High	
3 16092-1	Bottom Panel - With Hardware No Lock - 11-1/2" High	
3 16092-2	Bottom Panel - With Hardware No Lock - 15-1/2" High	
3 16091-1	Bottom Panel - With Seal & Brackets Only - 11-1/2" High	
3 16091-2	Bottom Panel - With Seal & Brackets Only - 15-1/2" High	
4 11-4	2" Horizontal Track - 10" Radius - 90 Degree - Curbside (Specify Length)	
5 11-5	2" Horizontal Track - 10" Radius - 90 Degree - Roadside (Specify Length)	
4 7459	2" Horizontal Track - 6-6" Radius - 90 Degree - Curbside (Specify Length)	
5 7458	2" Horizontal Track - 6-6" Radius - 90 Degree - Roadside (Specify Length)	
4 11-6	2" Horizontal Track - 6" Radius - 90 Degree - Curbside (Specify Length)	
5 11-7	2" Horizontal Track - 6" Radius - 90 Degree - Roadside (Specify Length)	
4 11-2	2" Horizontal Track - 8" Radius - 90 Degree - Curbside (Specify Length)	
5 11-3	2" Horizontal Track - 8" Radius - 90 Degree - Roadside (Specify Length)	
6 1031	2" Vertical Straight Track - Road or Curbside (Specify Length)	
7 2275-1	2" Vertical Track & Angle Assembly - Curbside (Specify Type, Length Of Each, Track Spacing)	
7 2275-2	2" Vertical Track & Angle Assembly - Roadside (Specify Type, Length Of Each, Track Spacing)	
8 2543	Mounting Angle Standard 2" X 2" Legs (Specify Length)	
8 61	Mounting Angle Standard 2-3/8" X 2-3/8" Legs With Mounting Holes (Specify Length)	
9 16124	Side Seal Vinyl Drive-In (Specify Length)	
9 19012	Side Seal Brush Drive-In (Specify Length)	
10 5600	Bottom Bracket Assembly - Complete (#5502, #5509, #5504, #10-1063-1)	
11 16094	Bottom Channel - Aluminum - For #5803 Anchor, #5600 Bracket, #77 Lock (Specify Length)	
12 5735	Bottom Seal For #16094 Aluminum Channel (Specify Length)	
13 9723BLK	Pull Down Strap - Top Coated Black Enamel (For Doors up to 96" High)	
13 9723-1BLK	Pull Down Strap - Top Coated Black Enamel (For Doors over 96" High)	
14 10-1068-1	Drive Screw #13 X 3/4" (For Bottom Seal)	
15 1715BLK	Grab Handle Top Coated Black Enamel	
16 232323	"Do Not Move" Decal - Premasked	
17 77BLK	Lock Assembly Standard - No Keeper - Top Coated Black Enamel	
18 10-1009-7	Cotter Pin (For #5803 Cable Anchor)	
19 10-1002-68	Rivet, Stainless Steel 1/4 X 1-1/32 X 1/2" Head (Used Pull Strap)	
20 2804	Latch Plate - Standard (For All Non Slam Type Lock Assemblies)	
21 7515BLK	Keeper Assembly Top Coated Black Enamel (For #77,#77-1,#5677,#8757)	
22 5803BLK	Cable Anchor Top Coated Black Enamel	
23 5502	Bottom Roller Cover (#5600 Bracket Assembly)	

Item Part No.	Description	1/2" PremiumPlate
24 5509	Bottom Roller Bracket (#5600 Bracket Assembly)	
25 10-1022-1	Keyp Nut 1/4-20 Thread (#1207, #10-1010-3)	
26 10-1002-85	Rivet, Stainless Steel 1/4 X 13/16 X 3/4" Head (Used On Hinges Brackets & Grab Handle)	
27 1209	Roller End Hinge Assembly - Complete (#1207, #1208, #10-1022-1)	
28 1208	Roller End Hinge Cover	
29 1207	Roller End Hinge	
30 15	Center Hinge	
31 10-1002-84	Rivet, Stainless Steel 1/4 X 1-15/16 X 1/2" Head (Used On Bottom Channel Lock & Keeper)	
32 6	Spacer Washer (For First & Last Panel Joint Rollers)	
33 2996	2" Steel Roller - 3" Shaft	
34 6943	Top Closure Slide	
35 1264	Top Closure Base With Nuts & Bolts	
36 6944	Top Closure Assembly Complete (#1264 & #6943)	
37 16095	Top Seal, Alumium Extrusion Only - Use With 7552 Seal (Specify Length)	
38 7176	Balancer Assembly - Complete (Without Brackets & Clamp)	
38 2376	Balancer Assembly - Complete (Without Brackets & Clamp)	
39 7205	Balancer Bracket for #7176 Balancer - Roadside - (For use with 7176 balancer)	
40 7206	Balancer Bracket for #7176 Balancer - Curbside - (For use with 7176 balancer)	
39 2524	Balancer Bracket - Roadside - (For use with 2376 balancer)	
40 2523	Balancer Bracket - Curbside - (For use with 2376 balancer)	
41 7207	Balancer Bracket - Center (For #7176)	
41 2525	Balancer Bracket - Center - (For use with 2376 balancer)	
42 2526	Balancer Clamp - Center	
43 10-1063-1	Self Locking Nut 5/16-18 Thread (For #2526, #1264, #5600)	
44 2528	Balancer Shaft (Specify Length Usually Door Width)	
45 7097COM	Cable Drum and Bearing Assembly - Roadside - (For use with 7176 balancer)	
46 7096COM	Cable Drum and Bearing Assembly - Curbside - (For use with 7176 balancer)	
45 2547	Cable Drum and Bearing Assembly - Roadside (Stamped 2901) - (For use with 2376 balancer)	
46 2548	Cable Drum and Bearing Assembly - Curbside (Stamped 2902) - (For use with 2376 balancer)	
47 7549COM	Winding Cone - Curbside - (For use with 7176 balancer)	
47 7550COM	Winding Cone - Roadside - (For use with 7176 balancer)	
47 2518COM	Winding Cone (For use with 2376 Balancer)	
48 2471	Spring Spacer (Relaxed Spring Length + 4-1/4")	
48 7232	Spring Spacer (Relaxed Spring Length + 3-1/4") For use with 7176 balancer	
49 2712	Torsion Spring - 2 5/8" Inside Diameter - Roadside - Left Hand Wound (Specify wire size and length) - (For use with 7176 balancer)	
50 2713	Torsion Spring - 2 5/8" Inside Diameter - Curbside - Right Hand Wound (Specify wire size and length) - (For use with 7176 balancer)	
49 2704	Torsion Spring - 2 3/16" Inside Diameter - Roadside - Left Hand Wound (Specify wire size and length) - (For use with 2376 balancer)	

Item Part No.	Description	1/2" PremiumPlate
50 2705	Torsion Spring - 2 3/16" Inside Diameter - Curbside - Right Hand Wound (Specify wire size and length) - (For use with 2376 balancer)	
51 2522	Thrust Washer	
52 10-1009-8	Cotter Pin 3/16 X 1-1/2" (For #2376)	
53 5504	Wear Plate (For #5600)	
54 83	2" Rubber Track Stop Bumper	
55 10-1010-3	Track Stop Bolt 1/4-20 x 2-1/2"	
56 1-11	Cable Assembly Stainless Steel 5/16" Eye - 110" (For Doors Up To 96" High)	
56 1-4	Cable Assembly Stainless Steel 5/16" Eye - 130" (For Doors 96 To 119" High)	
57 2699	Set Screw 3/8-16 Thread X 5/8" (For #2518)	
58 10-1006-9	Washer Stainless Steel (Used On Inside Bottom Panel To Hold Rivets)	
59 7552	Vinyl Top Seal Only - Use With #16095 Top Seal Extrusion (Specify Length)	
60 10-1004-1	Clevis Pin 5/16 X 1" (For #5803 Cable Anchor)	

Item Part No.	Description	1/4" PremiumPlate
1	18505	Top Panel Complete - #18547-1 Seal Jacket, #7552 Vinyl Seal, #1264 Brackets (Specify Door Serial Number)
2	18504-6	Intermediate - 11" High (Specify Door Serial Number)
2	18504-1	Intermediate - 11-1/2" High (Specify Door Serial Number)
2	18504-5	Intermediate - 15" High (Specify Door Serial Number)
3	18506-1	Bottom Panel - With Seal & Brackets Only - 11-1/2" High (Specify Door Serial Number)
3	18506-5	Bottom Panel - With Seal & Brackets Only - 15" High (Specify Door Serial Number)
3	18507-1	Bottom Panel - With Hardware No Lock - 11-1/2" High (Specify Door Serial Number)
3	18507-5	Bottom Panel - With Hardware No Lock - 15" High (Specify Door Serial Number)
3	18508-1	Bottom Panel - Complete With Lock - 11-1/2" High (Specify Door Serial Number)
3	18508-5	Bottom Panel - Complete With Lock - 15" High (Specify Door Serial Number)
4	11-2	2" Horizontal Track - 8" Radius - 90 Degree - Curbside (Specify Length)
5	11-3	2" Horizontal Track - 8" Radius - 90 Degree - Roadside (Specify Length)
4	11-4	2" Horizontal Track - 10" Radius - 90 Degree - Curbside (Specify Length)
5	11-5	2" Horizontal Track - 10" Radius - 90 Degree - Roadside (Specify Length)
4	11-6	2" Horizontal Track - 6" Radius - 90 Degree - Curbside (Specify Length)
5	11-7	2" Horizontal Track - 6" Radius - 90 Degree - Roadside (Specify Length)
4	7459	2" Horizontal Track - 6-6" Radius - 90 Degree - Curbside (Specify Length)
5	7458	2" Horizontal Track - 6-6" Radius - 90 Degree - Roadside (Specify Length)
6	1031	2" Vertical Straight Track - Road or Curbside (Specify Length)
7	2275-X	2" Vertical Track & Angle Assembly - Curbside (Specify Type, Length Of Each, Track Spacing)
7	2275-X	2" Vertical Track & Angle Assembly - Roadside (Specify Type, Length Of Each, Track Spacing)
8	61	Mounting Angle Standard 2-3/8" X 2-3/8" Legs With Mounting Holes (Specify Length)
8	2543	Mounting Angle Standard 2" X 2" Legs (Specify Length)
9	16124	Side Seal Vinyl Drive-In (Specify Length)
9	19099	Side Seal Brush Drive-In (Specify Length)
10	5600	Bottom Bracket Assembly - Complete (#5502, #5509, #5504, #10-1063-1)
11	8174-7	Bottom Channel - Aluminum - For #5803 Anchor, #5600 Bracket, #77 Lock (Specify Length)
12	19093	Bottom Seal For #16094 Aluminum Channel (Specify Length)
13	9723BLK	Pull Down Strap - Top Coated Black Enamel (For Doors up to 96" High)
13	9723-1BLK	Pull Down Strap - Top Coated Black Enamel (For Doors over 96" High)
14	10-1068-1	Drive Screw #13 X 3/4" (For Bottom Seal)
15	1715BLK	Grab Handle - Top Coated Black Enamel
16	232323	"Do Not Move" Decal - Premasked
17	77BLK	Lock Assembly Standard - No Keeper - Top Coated Black Enamel
18	10-1009-7	Cotter Pin (For #5803 Cable Anchor)
19	10-1002-89	Rivet, Stainless Steel 1/4 X 13/16 X 1/2" Head (Used Pull Strap)
20	2804	Latch Plate - Standard (For All Non Slam Type Lock Assemblies)
21	7515BLK	Keeper Assembly Top Coated Black Enamel (For #77, #77-1, #5677, #8757)
22	5803BLK	Cable Anchor Top Coated Black Enamel
23	5502	Bottom Roller Cover (#5600 Bracket Assembly)

24	5509	Bottom Roller Bracket (#5600 Bracket Assembly)
25	10-1022-1	Keq Nut 1/4-20 Thread (For #1371, #1207, #10-1010-3)
26	10-1002-88	Rivet, Stainless Steel 1/4 X 19/32 X 11/16" Head (Used On Hinges, Brackets & Grab Handle)
27	1209	Roller End Hinge Assembly - Complete (#1207, #1208, #10-1022-1)
28	1208	Roller End Hinge Cover
29	1207	Roller End Hinge
30	15	Center Hinge
31	10-1002-87	Rivet, Stainless Steel 1/4 X 11/16 X 1/2" Head (Used On Bottom channel, Lock & Keeper)
32	6	Spacer Washer (For First & Last Panel Joint Rollers)
33	2996	2" Steel Roller - 3" Shaft
34	6943	Top Closure Slide
35	1264	Top Closure Base With Nuts & Bolts
36	6944	Top Closure Assembly Complete (#1264 & #6943)
37	18547-1	Top Seal, Alumium Extrusion Only - Use With 7552 Seal (Specify Length)
38	2376	Balancer Assembly - Complete (Without Brackets & Clamp)
39	2524	Balancer Bracket - Roadside
40	2523	Balancer Bracket - Curbside
41	2525	Balancer Bracket - Center
42	2526	Balancer Clamp - Center
43	10-1063-1	Self Locking Nut 5/16-18 Thread (For #2526, #1264, #5600)
44	2528	Balancer Shaft (Specify Length Usually Door Width)
45	2547	Cable Drum & Bearing Assembly - Roadside (Stamped 2901)
46	2548	Cable Drum & Bearing Assembly - Curbside (Stamped 2902)
47	2518COM	Winding Cone With Screws
48	2471	Spring Spacer (Relaxed Spring Length + 4-1/4")
49	2704	Torsion Spring - 2-3/16" Inside Diameter - Roadside - Left Hand Wound (Specify Sizes)
50	2705	Torsion Spring - 2-3/16" Inside Diameter - Curbside - Right Hand Wound (Specify Sizes)
51	2522	Thrust Washer
52	10-1009-8	Cotter Pin 3/16 X 1-1/2" (For #2376)
53	5504	Wear Plate (For #5600)
54	83	2" Rubber Track Stop Bumper
55	10-1010-3	Track Stop Bolt 1/4-20 X 2-1/2"
56	1-11	Cable Assembly Stainless Steel 5/16" Eye - 110" (For Doors Up To 96" High)
56	1-4	Cable Assembly Stainless Steel 5/16" Eye - 130" (For Doors 96 To 119" High)
57	2699	Set Screw 3/8-16 Thread X 5/8" (For #2518)
58	10-1006-9	Washer Stainless Steel (Used On Inside Bottom Panel To Hold Rivets)
59	7552	Vinyl Top Seal Only - Use With #18547-1 Top Seal Extrusion (Specify Length)
60	10-1004-1	Clevis Pin 5/16 X 1" (For #5803 Cable Anchor)



Quality Products for the Transportation Industry

**Be sure to go
online to
www.whitingdoor.com
for our installation
guide. We include
installation
instructions, manuals,
and drawings!**



**Need help with maintenance? Go to
www.whitingdoor.com for step by step instructions on
several maintenance procedures.**

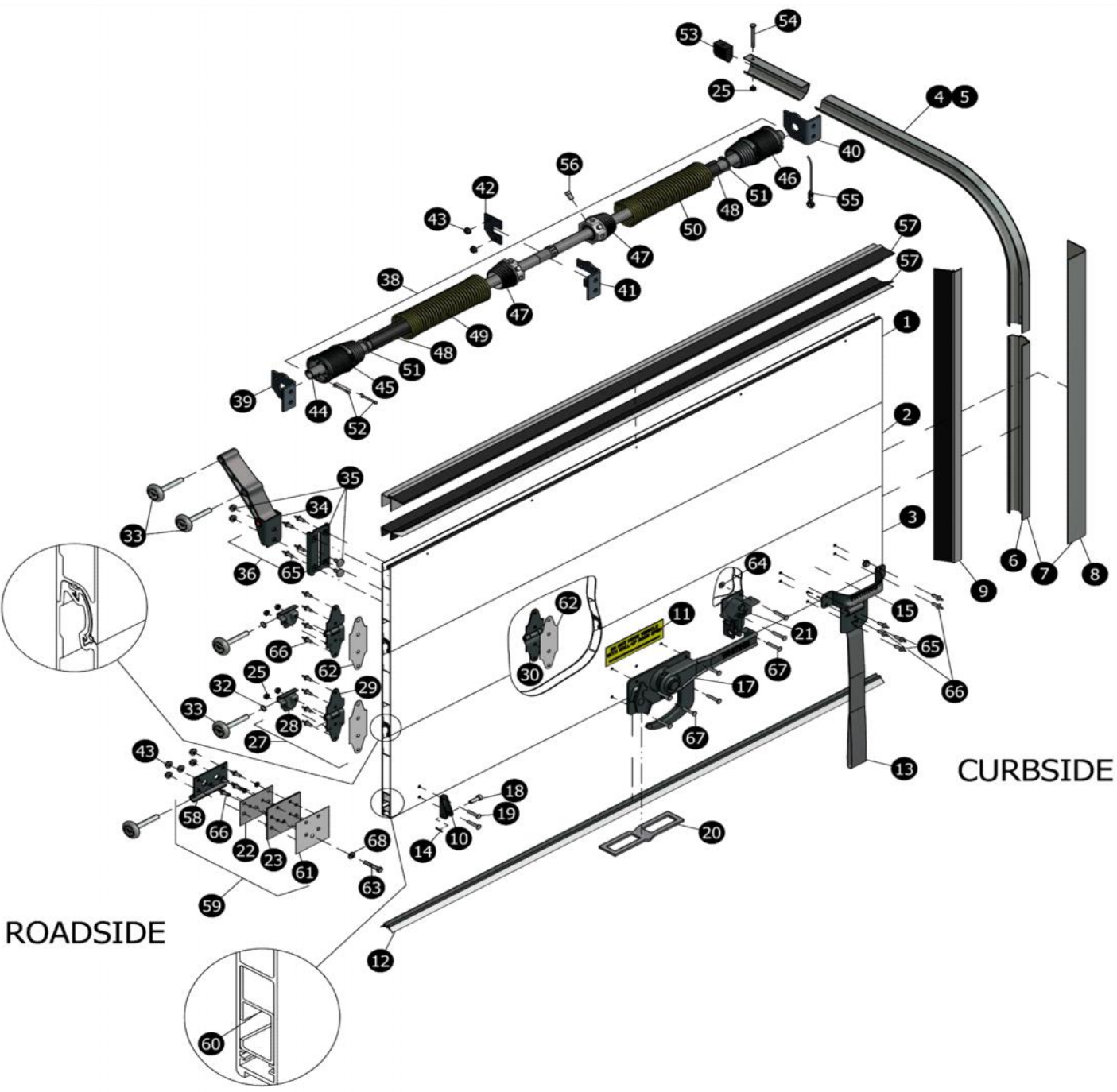
Corporate Offices:
113 Cedar Street
Akron, New York 14001
Phone: (716) 542-5427
Fax: (716) 542-5947
e-mail: info@whitingdoor.com

West Coast Offices:
301 S Milliken Avenue
Ontario, California 91761
Phone: (909) 877-0120
Fax: (909) 877-9180
Visit us online at www.whitingdoor.com



HINGED TRUSS II™

Extruded Aluminum Dry Freight Door



Visit our Search Parts page at www.whitingdoor.com.

Item	Part No.	Description	Hinged Truss II
------	----------	-------------	-----------------

1	15282	Top Panel Complete - Top Seal, #1264 Top Brackets (Specify Height and Width)
2	15297	Intermediate Panel - 10" High (Specify Width)
2	15280	Intermediate Panel - 13" High (Specify Width)
2	15281	Intermediate Panel - 15" High (Specify Width)
3	16241	Bottom Complete With Lock - 10" High (#4077 Standard - Specify Width)
4	11-4	2" Horizontal Track - 10" Radius - 90 Degree - Curbside (Specify Length)
5	11-5	2" Horizontal Track - 10" Radius - 90 Degree - Roadside (Specify Length)
4	11-6	2" Horizontal Track - 6" Radius - 90 Degree - Curbside (Specify Length)
5	11-7	2" Horizontal Track - 6" Radius - 90 Degree - Roadside (Specify Length)
4	11-2	2" Horizontal Track - 8" Radius - 90 Degree - Curbside (Specify Length)
5	11-3	2" Horizontal Track - 8" Radius - 90 Degree - Roadside (Specify Length)
5	2705	Torsion Spring - 2 3/16" Inside Diameter - Curbside - Right Hand Wound (Specify wire size and length) - (For use with 2376 balancer)
6	1031	2" Vertical Straight Track - Road or Curbside (Specify Length)
7	XX	Vertical Track & Angle Assembly - Curbside (Specify Length and Number of Both)
7	XX	Vertical Track & Angle Assembly - Roadside (Specify Length and Number of Both)
8	XX	Mounting Angle (Specify type and Length)
9	7131	Brush Side Seal Assembly (#5833 Brush Seal, #6924 Seal Retainer - Specify Length)
10	5488	Cable Anchor
11	232361	"Do Not Move" Decal - Premasked
12	5735	Bottom Seal (Specify Length)
13	9723	Pull Down Strap (For Doors up to 96")
13	9723-1	Pull Down Strap (For Doors over 96")
14	10-1009-7	Cotter Pin 1/8 X 3/4"(For #5803 Cable Anchor)
15	1715-10	Grab Handle (4 Mounting Holes)
17	4077	Lock Assembly Only - Standard Outside Cam (Without #7515 Keeper)
17	4077-1	Lock Assembly Only - Standard Outside Offset Cam (Without #7515 Keeper)
18	10-1004-1	Clevis Pin 5/16 X 1" (For #5803 Cable Anchor)
19	10-1002-49	Rivet, Stainless Steel 1/4 X 1-9/32 X 1/2" Head (For Cable Anchor)
20	2804	Latch Plate Standard
21	7515	Keeper Assembly
22	5504	Bottom Roller Wear Plate
23	7180	Bottom Roller Stud Plate
25	10-1022-1	Keyp Nut 1/4-20 Thread (#1207, #10-1010-3)
27	1209	Roller End Hinge Assembly - Complete (#1207,#1208, #10-1022-1)
28	1208	Roller End Hinge Cover
29	1207	Roller End Hinge
30	15	Center Hinge
32	6	Spacer Washer (For First & Last Panel Joint Rollers)
33	3228	2" Nylon Roller - Standard
33	2996	2" Steel Roller - 3" Shaft

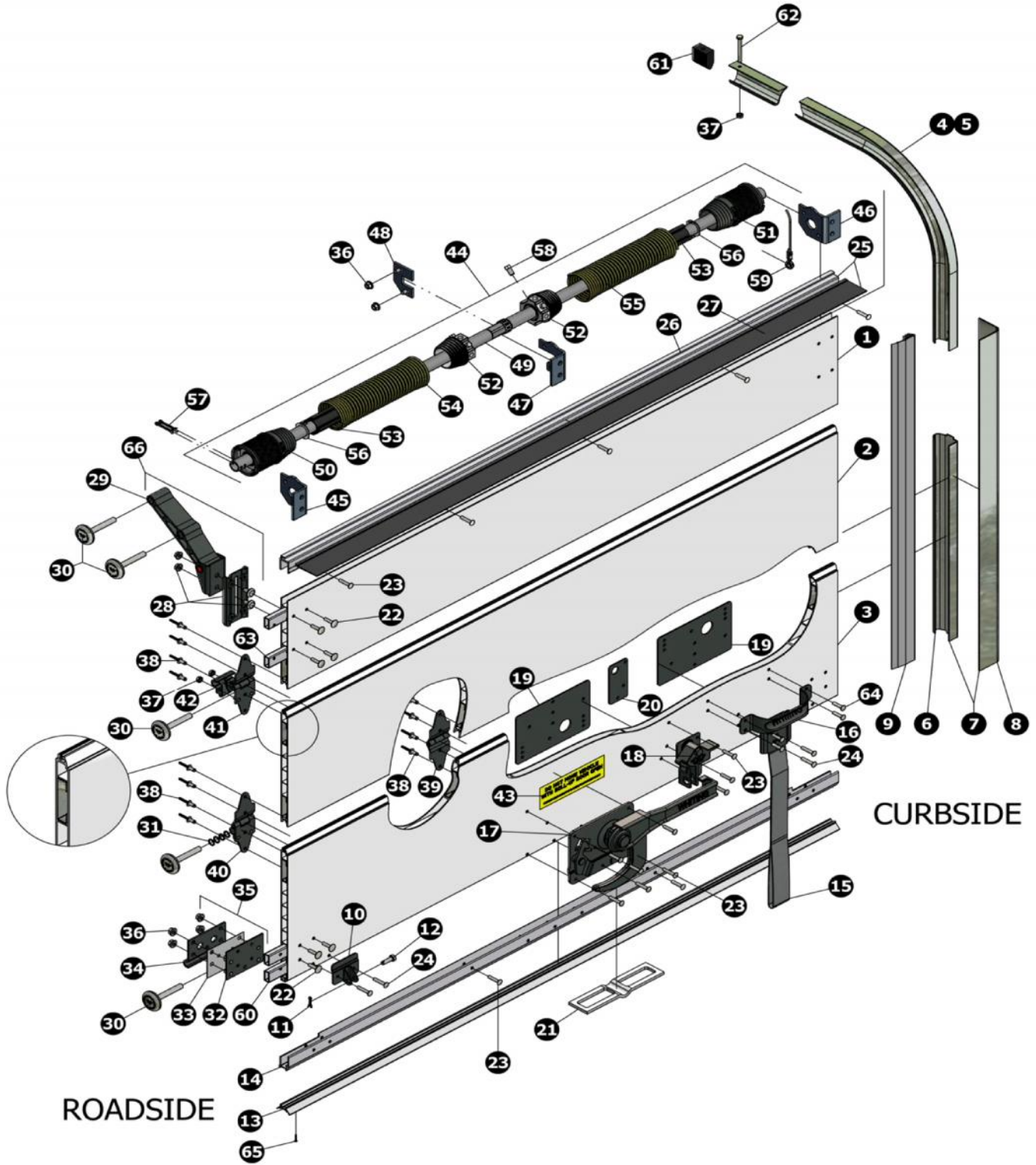
Item	Part No.	Description	Hinged Truss II
------	----------	-------------	-----------------

34	15886	Top Closure Bracket Assy	
35	1264	Top Closure Base With Nuts & Bolts	
36	15887	Top Closure Assembly Complete (#1264 & #15886)	
38	2376	Balancer Assembly - Complete (Without Brackets & Clamp)	
38	7176	Balancer Assembly - Complete (Without Brackets & Clamp)	
39	2524	Balancer Bracket - Roadside - (For use with 2376 balancer)	
40	2523	Balancer Bracket - Curbside - (For use with 2376 balancer)	
39	7205	Balancer Bracket for #7176 Balancer - Roadside - (For use with 7176 balancer)	
40	7206	Balancer Bracket for #7176 Balancer - Curbside - (For use with 7176 balancer)	
41	2525	Balancer Bracket - Center - (For use with 2376 balancer)	
41	7207	Balancer Bracket - Center (For #7176)	
42	2526	Balancer Clamp - Center	
43	10-1063-1	Self Locking Nut 5/16-18 Thread (For #2526, #7181)	
43	10-1063-4	Self Locking Nut Stainless Steel 5/16-18 Thread (For #10-1010-44 Bottom Bracket)	
44	2528	Balancer Shaft (Specify Length Usually Door Width)	
45	2547	Cable Drum and Bearing Assembly - Roadside (Stamped 2901) - (For use with 2376 balancer)	
46	2548	Cable Drum and Bearing Assembly - Curbside (Stamped 2902) - (For use with 2376 balancer)	
45	7097COM	Cable Drum and Bearing Assembly - Roadside - (For use with 7176 balancer)	
46	7096COM	Cable Drum and Bearing Assembly - Curbside - (For use with 7176 balancer)	
47	2518COM	Winding Cone (For use with 2376 Balancer)	
47	7549COM	Winding Cone - Curbside - (For use with 7176 balancer)	
48	2471	Spring Spacer (Relaxed Spring Length + 4-1/4")	
49	2704	Torsion Spring - 2 3/16" Inside Diameter - Roadside - Left Hand Wound (Specify wire size and length) - (For use with 2376 balancer)	
50	2705	Torsion Spring - 2 3/16" Inside Diameter - Curbside - Right Hand Wound (Specify wire size and length) - (For use with 2376 balancer)	
49	2712	Torsion Spring - 2 5/8" Inside Diameter - Roadside - Left Hand Wound (Specify wire size and length) - (For use with 7176 balancer)	
50	2713	Torsion Spring - 2 5/8" Inside Diameter - Curbside - Right Hand Wound (Specify wire size and length) - (For use with 7176 balancer)	
51	2522	Thrust Washer	
52	10-1009-8	Cotter Pin 3/16 X 1-1/2" (For #2376)	
53	83	2" Rubber Track Stop Bumper	
54	10-1010-3	Track Stop Bolt 1/4-20 X 2-1/2"	
55	1-11	Cable Assembly Stainless Steel 5/16" Eye - 110" (For Doors Up To 96" High)	
55	1-4	Cable Assembly Stainless Steel 5/16" Eye - 130" (For Doors 96 To 119" High)	
56	2699	Set Screw 3/8-16 Thread X 5/8" (For #2518)	
57	5887	Top Brush Seal Assembly (#5843 Brush Seal, #5871 Seal Retainer - Specify Length)	
57	15353	Top Seal, Vinyl (Specify Length)	
58	5502	Bottom Roller Bracket Cover	
59	7181	Bottom Roller Bracket Assembly (#7180, #5504, #5502)	
60	7178-1	Panel Insert - 17" Long (Center of Panel for Lock)	

Item	Part No.	Description	Hinged Truss II
60	7178	Panel Insert - 4" Long (Panel Ends)	
61	7952	Vinyl Gasket (For Under Bottom Bracket)	
62	7953	Vinyl Gasket (For Under Hinges)	
63	10-1010-44	Bolt Stainless Steel 5/16-18 X 1-3/4" (For Bottom Roller Bracket)	
64	10-1006-9	Stainless Steel Washer	
65	10-1054-18	Rivet - 1/4" Monobolt (For Strap Top Bracket)	
66	10-1054-20	Rivet - 1/4" Monobolt (For Handle, Bottom Brkt, Hinges, Top Seal, Lock)	
66	10-1054-16	Rivet - 1/4" Pull Type (For Handle, Bottom Brkt, Hinges, Top Seal, Lock)	
67	10-1002-79	Rivet, Stainless Steel 1/4 X 1-13/32 X 1/2" Head (For Lock Keeper)	
68	10-1006-27	Stainless Steel Washer	

SHIELDseries™

Thermoplastic Dry Freight Door



Item	Part No.	Description	SHIELDseries
1	16843	Top Panel Complete - #15946 Top Seal, #1264 Top Bracket Mounting Plates (Specify Height and Width)	
2	16845	Intermediate Panel - 11-1/2" High (Specify Width) Includes Inserts and Panel Joint Seal	
2	16844	Intermediate Panel - 13-1/2" High (Specify Width) Includes Inserts and Panel Joint Seal	
3	16841-1	Bottom Complete With Lock - 14" High (#77BLK Standard - Specify Width)	
4	11-4	2" Horizontal Track - 10" Radius - 90 Degree - Curbside (Specify Length)	
5	11-5	2" Horizontal Track - 10" Radius - 90 Degree - Roadside (Specify Length)	
4	11-2	2" Horizontal Track - 8" Radius - 90 Degree - Curbside (Specify Length)	
5	11-3	2" Horizontal Track - 8" Radius - 90 Degree - Roadside (Specify Length)	
6	2274-1	Vertical Track & Angle Assembly - Curbside (#1796, #1031 - Specify Length Of Both)	
7	2275-2	Vertical Track & Angle Assembly - Roadside (#1796, #1031 - Specify Length Of Both)	
8	XX	Mounting Angle (Specify type and Length)	
9	5377	Vinyl Side Seal (Specify Length)	
10	5803BLK	Cable Anchor Top Coated Black Enamel	
11	10-1009-7	Cotter Pin 1/8 X 3/4" (For #5803 Cable Anchor)	
11	10-1009-19	Cotter Pin 1/8 X 3/4" Stainless Steel (For #5803 Cable Anchor)	
12	10-1004-1	Clevis Pin 5/16 X 1" (For #5803 Cable Anchor)	
12	10-1004-5	Clevis Pin 5/16 X 1" Stainless Steel (For #5803 Cable Anchor)	
13	5735	Bottom Seal Vinyl (For #8174-1 Channel - Specify Length)	
14	8174-1	Aluminum Bottom Channel (For #5735-Specify Length)	
15	9723BLK	Pull Down Strap - Top Coated Black Enamel (For Doors up to 96")	
15	9723-1BLK	Pull Down Strap - Top Coated Black Enamel (For Doors over 96")	
16	1715-10BLK	Grab Handle Top Coated Black Enamel	
17	77BLK	Lock Assembly Standard - No Keeper Top Coated Black Enamel	
18	7515BLK	Keeper Assembly Top Coated Black Enamel (For #77,#77-1,#5677,#8757)	
19	7857	Reinforcement Plate (For Lock And Grab Handle Inside Of Bottom Panel)	
20	8809	Reinforcement Plate (For Lock Keeper Inside Of Bottom Panel)	
21	2804	Latch Plate Standard	
22	10-1002-23	Rivet, Stainless Steel 1/4 X 1-1/32 X 3/4" Head (Used On Brackets)	
23	10-1002-45	Rivet, Stainless Steel 1/4 X 1-5/32 X 1/2" Head (Used On Bottom Channel Lock & Top Seal)	
24	10-1002-49	Rivet, Stainless Steel 1/4 X 1-9/32 X 1/2" Head (For Strap & Cable Anchor)	
25	15946	Top Seal Assembly (Specify Length - Includes Items 26 & 27)	
26	8024	Aluminum Top Channel (Specify Length)	
27	7552	Vinyl Top Seal (Specify Length)	
28	1264	Top Closure Base With Nuts & Bolts	
29	15886	Top Closure Bracket	
30	3228-1	2" Nylon Roller-Shielded	
30	3228-3	2" Nylon Roller - Stainless Steel 3" Shaft	
30	3228	2" Nylon Roller - Standard	
30	2996	2" Steel Roller - 3" Shaft	
30	2996-3	2" Steel Roller - 5" Shaft	

Item	Part No.	Description	SHIELDseries
30	2996-2	2" Steel Roller-Stainless Steel 3" Shaft	
31	6	Spacer Washer (For First & Last Panel Joint Rollers)	
32	5509	Bottom Roller Bracket	
33	5504	Bottom Roller Wear Plate	
34	5502	Bottom Roller Bracket Cover	
35	5600	Bottom Roller Bracket Assembly (#5509, #5504, #5502)	
36	10-1063-1	Self Locking Nut 5/16-18 Thread (For #2526, #1264, #5600)	
37	10-1022-1	Kep Nut 1/4-20 Thread (For #1371, #1207, #10-1010-3)	
38	10-1054-23	Pull Type Rivet Steel	
38	10-1054-24	Stainless Steel Pull type Rivet	
39	15	Center Hinge	
40	1209	Roller End Hinge Assembly-Complete (#1207, #1208, #10-1022-1)	
41	1207	Roller End Hinge	
42	1208	Roller End Hinge Cover	
43	232361	"Do Not Move" Decal - Premasked	
44	2376	Balancer Assembly - Complete (Without Brackets & Clamp)	
45	2524	Balancer Bracket - Roadside - (For use with 2376 balancer)	
46	2523	Balancer Bracket - Curbside - (For use with 2376 balancer)	
47	2525	Balancer Bracket - Center - (For use with 2376 balancer)	
48	2526	Balancer Clamp - Center	
49	2528	Balancer Shaft (Specify Length Usually Door Width)	
50	2547	Cable Drum and Bearing Assembly - Roadside (Stamped 2901) - (For use with 2376 balancer)	
51	2548	Cable Drum and Bearing Assembly - Curbside (Stamped 2902) - (For use with 2376 balancer)	
52	2518COM	Winding Cone (For use with 2376 Balancer)	
53	2471	Spring Spacer (Relaxed Spring Length + 4-1/4")	
54	2704	Torsion Spring - 2 3/16" Inside Diameter - Roadside - Left Hand Wound (Specify wire size and length) - (For use with 2376 balancer)	
55	2705	Torsion Spring - 2 3/16" Inside Diameter - Curbside - Right Hand Wound (Specify wire size and length) - (For use with 2376 balancer)	
56	2522	Thrust Washer	
57	10-1009-8	Cotter Pin 3/16 X 1-1/2" (For #2376)	
58	2699	Set Screw 3/8-16 Thread X 5/8" (For #2518)	
59	1-11	Cable Assembly Stainless Steel 5/16" Eye - 110" (For Doors Up To 96" High)	
59	1-4	Cable Assembly Stainless Steel 5/16" Eye - 130" (For Doors 96 To 119" High)	
60	18160-1	Panel Insert 4" Long	
61	83	Track Stop Rubber	
62	10-1010-3	Track Stop Bolt 1/4-20 x 2-1/2"	
63	18160-2	Panel Insert 2-3/4" Long	
64	10-1002-68	Rivet, Stainless Steel 1/4 X 1-1/32 X 1/2" Head (For Grab Handle)	
65	10-1068-1	Drive Screw #13 X 3/4" (For Bottom Seal)	
66	15887	Top Closure Assembly (Less Item 38)	

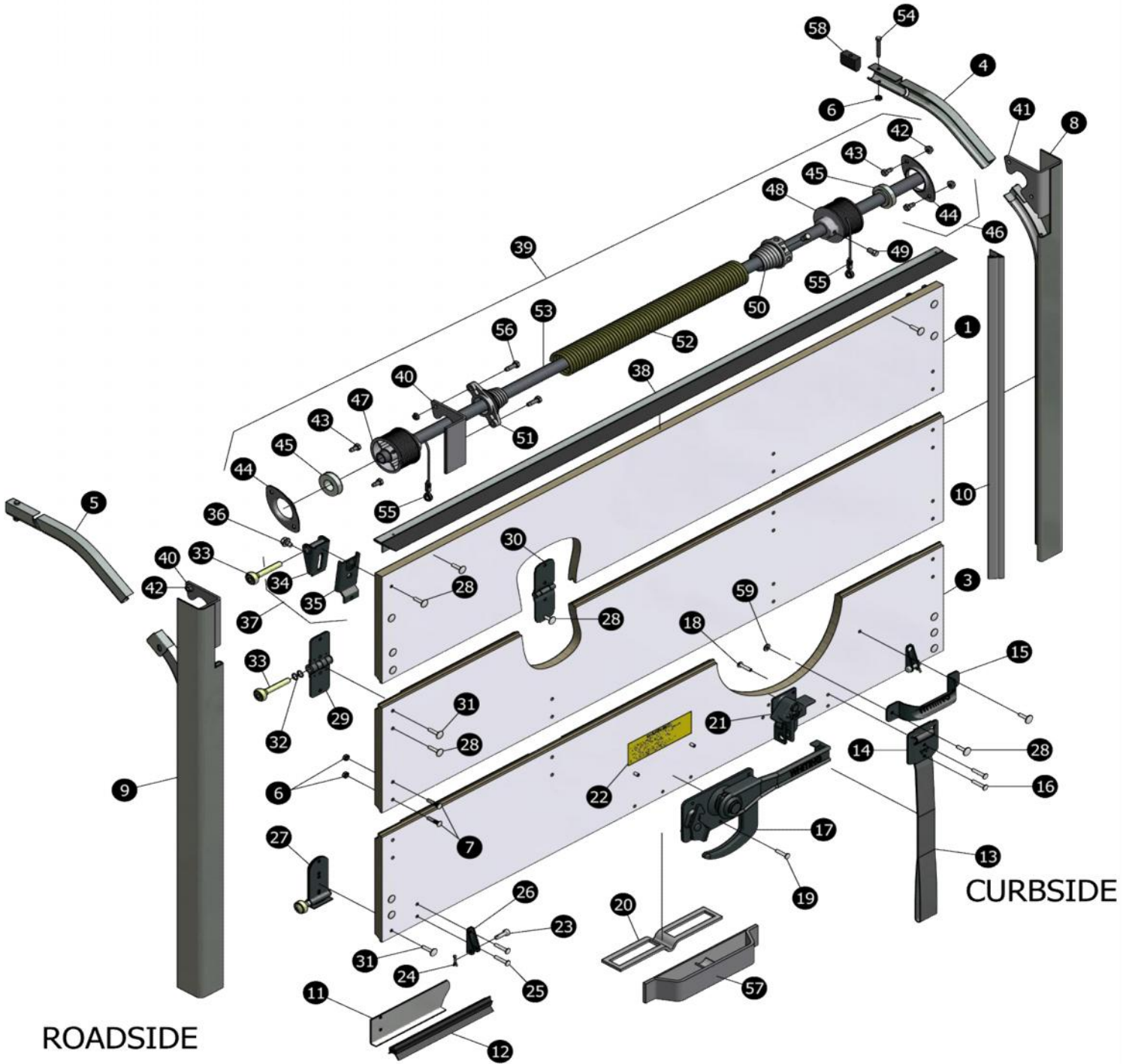
At www.whitingdoor.com you will find helpful videos to view. Our videos contain instructions, tips, and reminders to help you while you are installing or maintaining a Whiting door.

The screenshot displays the Whiting Door Manufacturing Corp. website. At the top left is the Whiting logo, a stylized 'W' with a red arrow pointing down, followed by the word 'WHITING' in a bold, black, sans-serif font. To the right of the logo is the tagline 'Quality Products for the Transportation Industry' in red. Below the logo and tagline is a horizontal navigation menu with the following items: Home, About Us, Products, Service and Support, Owner's Guide (highlighted), Global Partners, Contact Us, and Sign In. Below the navigation menu is a sidebar on the left with the following links: Owner's Guide, Installation Guide, Maintenance Guide, Videos, and Warranty. The main content area features a video player titled 'Introduction' showing a white Whiting truck with a door unit. To the right of the video player is a dropdown menu labeled 'Premium Door Installation' with a list of video segments: Introduction, Unit Preparation, Ordering the Door, and Gather Tools. Below the video player is a standard video control bar with a play/pause button, a progress slider, a volume icon, a full screen icon, and navigation buttons for 'Prev', 'Autoplay', and 'Next'. At the bottom of the page, there is a footer with a 'GOADDY VERIFIED & SECURED' logo on the left, a navigation menu (Home | About Us | Products | Service and Support | Owner's Guide | Global Partners | Contact Us | Sign In), contact information (World Headquarters: Akron, NY 14001. Phone 716.542.5427 Fax 716.542.5947), copyright information (© 2013 Whiting Door Manufacturing Corp. Privacy Policy | Site Map), and an 'ISO 9001 CERTIFIED' logo on the right.

Check out our channel on


General Purpose™

3/4" Basic Dry Freight Door



Visit our Search Parts page at www.whitingdoor.com.

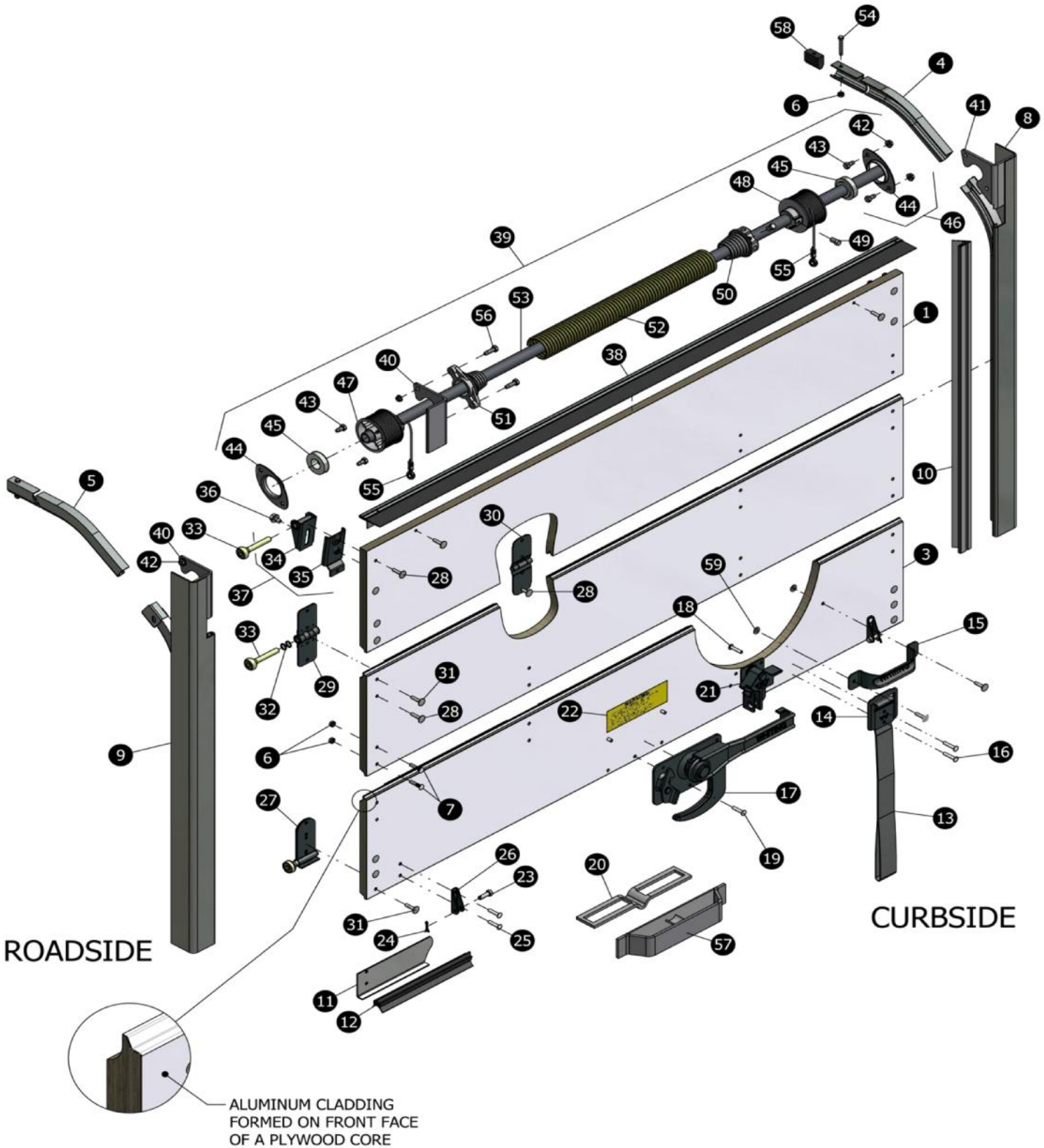
Item	Part No.	Description	General Purpose Dry Freight
1	4441	Top Panel Complete - #4032 Top Seal, #4051 Brackets - Tongue & Groove Routed for 5 Hinge Rows (Specify Height and Width)	
1	4041	Top Panel Plain - Tongue & Groove Routed for 4 Hinge Rows (Specify Height and Width) Todco Xref item: 29013	
1	4041-5	Top Panel Plain - Tongue & Groove Routed for 5 Hinge Rows (Specify Height and Width) Todco Xref item: 29013-5	
2	4042	Intermediate Panel - Tongue & Groove Routed for 4 Hinge Rows (Specify Height and Width) Todco Xref item: 29014	
2	4042-5	Intermediate Panel - Tongue & Groove Routed for 5 Hinge Rows (Specify Height and Width) Todco Xref item: 29014-5	
3	4445	Bottom Panel Complete - Tongue & Groove Routed for 4 Hinge Rows-Seal, Hardware,#4077 Lock (Specify Height and Width)	
3	4445-5	Bottom Panel Complete - Tongue & Groove Routed for 5 Hinge Rows-Seal, Hardware, #4077 Lock (Specify Height and Width)	
3	4043	Bottom Panel - Tongue & Groove Routed for 4 Hinge Rows - Seal and Hardware Only-No Lock (Specify Height and Width) Todco Xref item: 29016	
3	4043-5	Bottom Panel - Tongue & Groove Routed for 5 Hinge Rows-Seal and Hardware Only - No Lock (Specify Height and Width) Todco Xref item: 29016-5	
4	4117	1" Horizontal Track - 6 - 11" Radius - 90 Degree - Curbside for Use With #4015 Straight Track (Specify Length)	
5	4116	1" Horizontal Track-6 - 11" Radius - 90 Degree-Roadside for Use #4015 Straight Track (Specify Length)	
4	4374	1" Horizontal Track - 6 - 6" Radius - 90 Degree - Curbside for Use With #4015 Straight Track (Specify Length)	
5	4343	1" Horizontal Track - 6 - 6" Radius - 90 Degree - Roadside for Use With #4015 Straight Track (Specify Length)	
4	4055	1" Horizontal Track - 11" Radius - 40 Degree - Curbside for Use With #4057 50 Degree Vertical (Specify Length)	
5	4054	1" Horizontal Track - 11" Radius - 40 Degree - Roadside for Use With #4057 50 Degree Vertical (Specify Length)	
4	4139	1" Horizontal Track - 11" Radius - 90 Degree - Curbside for Use With #4015 Straight Track (Specify Length)	
5	4138	1" Horizontal Track - 11" Radius - 90 Degree - Roadside for Use With #4015 Straight Track (Specify Length)	
4	4053	1" Horizontal Track - 6" Radius - 40 Degree - Curbside for Use With #4057 50 Degree Vertical (Specify Length) Todco Xref item: 41043	
5	4052	1" Horizontal Track - 6" Radius - 40 Degree - Roadside for Use With #4057 50 Degree Vertical (Specify Length) Todco Xref Item: 41042	
4	4093	1" Horizontal Track-6" Radius - 90 Degree-Curbside for Use With #4015 Straight Track (Specify Length)	
5	4092	1" Horizontal Track - 6" Radius - 90 Degree - Roadside for Use With #4015 Straight Track (Specify Length)	
6	10-1022-1	Kep Nut 1/4-20 Thread (For #10-1010-31, 10-1003-8) Todco Xref item: 80352-420	
7	10-1003-8	Step Bolt 1/4-20 X 1-1/4" Thread (For Joining Door Halves) Todco Xref item: 80015-1612	
8	4120	Vertical Track & Mounting Angle - Curbside - #4016 Angle, #4015 Straight Track, #4029 Bracket (Specify Length of Both Angle and Vertical Track)	
9	4121	Vertical Track & Mounting Angle - Roadside - #4016 Angle, #4015 Straight Track, #4028 Bracket (Specify Length of Both Angle and Vertical Track)	

Item	Part No.	Description	General Purpose Dry Freight
8	4046	Vertical Track & Mounting Angle - Curbside - With #4016 Angle, #4057 - 6" Rad 50 Degree Vertical #4029 Bracket, #4033 Bearing Retainer #4047 Connector Sleeve - (Specify Length of Both Angle and Vertical Track) Todco Xref item: 41035-1	
9	4045	Vertical Track & Mounting Angle - Roadside - With #4016 Angle, #4056 -6" Rad 50 Degree Vertical #4028 Bracket, #4033 Bearing Retainer, #4047 Connector Sleeve-(Specify Length of Both Angle and Vertical Track) Todco Xref item: 41034-2	
10	4019	Side Seal for #4016 (Specify Length) Todco Xref item: 69840	
11	4034	Bottom Angle Seal Retainer - No Mounting Holes for #3257 (Specify Length) Todco Xref item: 61191	
12	3257	Bottom Seal for #4034 (Specify Length) Todco Xref item: 80840	
13	9723	Pull Down Strap (For Doors up to 96")	
13	9723-1	Pull Down Strap (For Doors over 96")	
14	7575	Pull Strap Retainer	
15	1715	Lift Handle Todco Xref item: 61401	
16	10-1002-9	Rivet, Steel 1/4 X 1-5/16 X 1/2" Head (For Cable Anchor)	
17	4077	Cam Lock Offset Cam No Keeper	
18	10-1002-42	Rivet, Steel 1/4 X 1-1/16 X 3/4" Head (Used On Lock & Keeper)	
19	10-1002-11	Rivet, Steel 1/4 X 1-1/8 X 1/2" Head (Used On Lock)	
20	4021	Latch Plate for #4077 or #4077-1	
21	7515	Handle Keeper Assembly (For #4077 & #4077-1 Lock Assemblies)	
22	232323	"Do Not Move" Decal-Premasked	
23	10-1004-2	Cable Anchor Clevis Pin 1/4 X 7/8" Todco Xref item: 61026	
25	10-1002-9	Rivet, Steel 1/4 X 1-5/16 X 1/2" Head (For Strap)	
26	4004	Cable Anchor Bracket Todco Xref item: 61204	
27	4003	Bottom Roller Fixture Todco Xref item: 61352	
27	8814	Bottom Roller Fixture, High Strength, 2 Piece, Curbside Todco Xref item: 70123-1	
27	8813	Bottom Roller Fixture, High Strength, 2 Piece, Roadside Todco Xref item: 70123-2	
28	10-1002-23	Rivet, Stainless Steel 1/4 X 1-1/32 X 3/4" Head (Used On Hinges, Top Brackets, Grab Handle & Top Seal)	
28	10-1002-3	Rivet, Steel 1/4 X 1 X 3/4" Head (Used On Hinges, Top Brackets, Grab Handle & Top Seal) Todco Xref item: 80841	
29	8656	End Hinge - High Strength Todco Xref item: 70236	
30	4012	Center Hinge Todco Xref 61196	
30	8654	Center Hinge High Strength Todco Xref item: 70238	
31	10-1002-43	Rivet, Stainless Steel 1/4 X 1-3/32 X 3/4" Head (For Bottom Brackets & End Hinges)	
31	10-1002-36	Rivet, Steel 1/4 X 1-1/8 X 3/4" Head (For Bottom Brackets & End Hinges) Todco Xref item: 80842	
32	6	Spacer Washer (For First & Last Panel Joint Rollers)	
33	61174	Roller - 1" Stamped Steel	
33	4026	Roller -1" Precision Steel	
33	4027	Roller - 1" Stamped Steel	
34	4038	Adjustable Top Fixture Slide (for #4051) Todco Xref item: 69431	
34	8652	Adjustable Top Fixture Slide High Strength (for #4051) Todco Xref item: 70233	
35	4051	Adjustable Top Fixture Base (for #4038) Todco Xref item: 69432	

Item	Part No.	Description	General Purpose Dry Freight
36	10-1073-2	Adjustable Top Fixture Bolt 3/8-16 X 1/2" (for #4051) Todco Xref item: 89049	
37	4039	Adjustable Top Fixture Assembly Todco Xref Todco Xref item: 69433	
38	4032	Top Seal - Reinforced Rubber Rolled In Steel Jacket (Specify Length) Todco Xref item: 61402	
39	4090	Balancer Assembly - Complete (Without #4029 & #4028 Brackets,#4033 Bearing Assy- Specify Door Dimensions) Todco Xref item: 59174	
40	4028	Balancer Mounting Bracket - Right Hand-Roadside and Center Todco Xref item: 51036-2	
41	4029	Balancer Mounting Bracket - Left Hand - Curbside Todco Xref 51036-1	
42	10-1063-1	Self Locking Nut 5/16-18 Thread (For #10-1010-8, #10-1010-9) Todco Xref item: 80352-518	
43	10-1010-8	Hex Head Capscrew 5/16-18 X 5/8" (for Bearing Retainer) Todco Xref item: 89043-1	
44	4023	Balancer Bearing Retainer	
46	4033	Bearing and Retainer Assembly (#4023 & 10-1025-4) Todco Xref item 51039	
47	4128COM	Cable Drum - 3" Diameter - Roadside - Right Hand - 105 to 144" Door With Screws Todco Xref 59033-2	
48	4127	Cable Drum - 3" Diameter - Curbside - Left Hand - 105 to 144" Door With Screws	
47	4014COM	Cable Drum - 3" Diameter - Roadside - Right Hand - up to 105" Door With Screws Todco Xref item: 51040-1	
48	4013COM	Cable Drum - 3" Diameter - Curbside - Left Hand - up to 105" Door With Screws Todco Xref item: 51040-2	
49	2699	Hex Head Set Screw 3/8-16 X 5/8" (for Cable Drums & Winding Plug) Todco Xref item: 80300-2414	
50	4050COM	Spring Winding Plug - 1-3/4" With Screws Todco Xref item: 51041	
52	2701	Torsion Spring Right Hand - 1-3/4" Inside Diameter (Specify Wire Thickness and Length)	
52	51042	Torsion Spring Right Hand - 1-3/4" Inside Diameter (Specify Wire Thickness and Length)	
53	3100	Counter Balancer Shaft 1" Diameter (Specify Length) Todco Xref item: 51037	
54	10-1010-31	Hex Head Capscrew 1/4-20 X 1-3/4" (for Horizontal Track Stop) Todco Xref item: 80105-416	
55	4020-1	Cable Assembly Stainless Steel 1/4 Eye - 115" (For Doors Up To 105" High) Todco Xref item: 59004	
56	10-1010-9	Hex Head Capscrew 5/16-18 X 1" (for Anchor Plug) Todco Xref item: 8105-508	
57	4024	Catch Box Todco Xref 69341	
58	4204	1" Rubber Track Stop Bumper	
59	10-1006-1	Steel Washer 1/4 X 3/4" (for Fastening Rivets on Inside Panel)	

General Purpose™

Aluminum-Clad 3/4" Basic Dry Freight Door



Visit our Search Parts page at www.whitingdoor.com.

Item Part No. Description General Purpose Aluminum-Clad

1	4429-5	Top Panel Complete - #4032 Top Seal, #4051 Brackets - Tongue & Groove Routed for 5 Hinge Rows (Specify Height and Width)
1	4129	Top Panel Plain - Tongue & Groove Routed for 4 Hinge Rows (Specify Height and Width)
1	4129-5	Top Panel Plain - Tongue & Groove Routed for 5 Hinge Rows (Specify Height and Width)
2	4130	Intermediate Panel - Tongue & Groove Routed for 4 Hinge Rows (Specify Height and Width) Todco Xref item: 29018
2	4130-5	Intermediate Panel - Tongue & Groove Routed for 5 Hinge Rows (Specify Height and Width) Todco Xref item: 29018-5
3	4443	Bottom Panel Complete - Tongue & Groove Routed for 4 Hinge Rows - Seal, Hardware, #4077 Lock (Specify Height and Width)
3	4443-5	Bottom Panel Complete - Tongue & Groove Routed for 5 Hinge Rows - Seal, Hardware, #4077 Lock (Specify Height and Width)
3	4131	Bottom Panel - Tongue & Groove Routed for 4 Hinge Rows - Seal and Hardware Only - No Lock (Specify Height and Width)
3	4131-5	Bottom Panel - Tongue & Groove Routed for 5 Hinge Rows - Seal and Hardware Only - No Lock (Specify Height and Width)
4	4055	1" Horizontal Track - 11" Radius - 40 Degree - Curbside for Use With #4057 50 Degree Vertical (Specify Length)
5	4054	1" Horizontal Track - 11" Radius - 40 Degree - Roadside for Use With #4057 50 Degree Vertical (Specify Length)
4	4139	1" Horizontal Track - 11" Radius - 90 Degree - Curbside for Use With #4015 Straight Track (Specify Length)
5	4138	1" Horizontal Track - 11" Radius - 90 Degree - Roadside for Use With #4015 Straight Track (Specify Length)
4	4053	1" Horizontal Track - 6" Radius - 40 Degree - Curbside for Use With #4057 50 Degree Vertical (Specify Length) Todco Xref item: 41043
5	4052	1" Horizontal Track - 6" Radius - 40 Degree - Roadside for Use With #4057 50 Degree Vertical (Specify Length) Todco Xref item: 41042
4	4093	1" Horizontal Track - 6" Radius - 90 Degree - Curbside for Use With #4015 Straight Track (Specify Length)
5	4092	1" Horizontal Track - 6" Radius - 90 Degree - Roadside for Use With #4015 Straight Track (Specify Length)
4	4117	1" Horizontal Track - 6-11" Radius - 90 Degree - Curbside for Use With #4015 Straight Track (Specify Length)
5	4116	1" Horizontal Track - 6-11" Radius - 90 Degree - Roadside for Use With #4015 Straight Track (Specify Length)
4	4374	1" Horizontal Track - 6-6" Radius - 90 Degree - Curbside for Use With #4015 Straight Track (Specify Length)
5	4343	1" Horizontal Track - 6-6" Radius - 90 Degree - Roadside for Use With #4015 Straight Track (Specify Length)
6	10-1022-1	Kep Nut 1/4-20 Thread (For #10-1010-31, 10-1003-8) Todco Xref item: 80352-420
7	10-1003-8	Step Bolt 1/4-20 X 1-1/4" Thread (For Joining Door Halves)
8	4120	Vertical Track & Mounting Angle - Curbside - #4016 Angle, #4015 Straight Track, #4029 Bracket (Specify Length of Both Angle and Vertical Track)
9	4121	Vertical Track & Mounting Angle - Roadside - #4016 Angle, #4015 Straight Track, #4028 Bracket (Specify Length of Both Angle and Vertical Track)

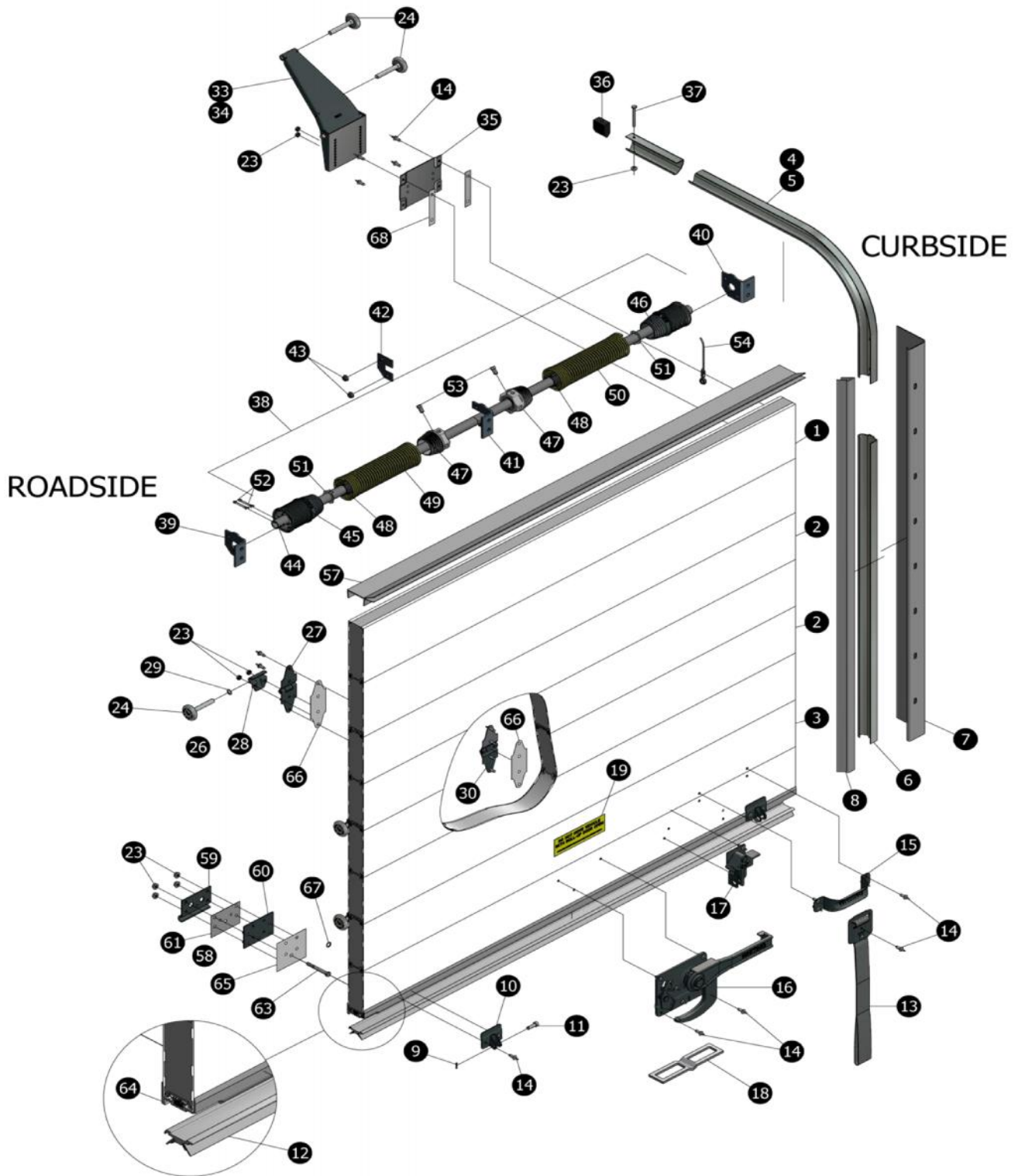
Item Part No.	Description	General Purpose Aluminum-Clad
8 4046	Vertical Track & Mounting Angle - Curbside - With #4016 Angle, #4057 - 6" Rad 50 Degree Vertical #4029 Bracket #4047 Connector Sleeve - (Specify Length of Both Angle and Vertical Track) Todco Xref item: 41035-1	
9 4045	Vertical Track & Mounting Angle - Roadside - With #4016 Angle, #4056 - 6" Rad 50 Degree Vertical #4028 Bracket #4033 Bearing Retainer #4047 Connector Sleeve - (Specify Length of Both Angle and Vertical Track) Todco Xref item: 41034-2	
10 4019	Side Seal for #4016 (Specify Length) Todco Xref item: 69840	
11 4034	Bottom Angle Seal Retainer - No Mounting Holes for #3257 (Specify Length) Todco Xref item: 61191	
12 3257	Bottom Seal for #4034 (Specify Length) Todco Xref item: 80840	
13 9723BLK	Pull Down Strap - Top Coated Black Enamel (For Doors up to 96")	
13 9723-1BLK	Pull Down Strap - Top Coated Black Enamel (For Doors over 96")	
14 7575BLK	Pull Strap Retainer - Top Coated Black Enamel	
15 1715BLK	Lift Handle - Top Coated Black Enamel	
16 10-1002-9	Rivet, Steel 1/4 X 1-5/16 X 1/2" Head (For Strap)	
17 4077BLK	Cam Lock No Keeper -Top Coated Black Enamel	
17 4077-1BLK	Cam Lock Offset Cam No Keeper - Top Coated Black Enamel	
18 10-1002-42	Rivet, Steel 1/4 X 1-1/16 X 3/4" Head (Used On Lock & Keeper)	
19 10-1002-11	Rivet, Steel 1/4 X 1-1/8 X 1/2" Head (Used On Lock)	
20 4021	Latch Plate for #4077 or #4077-1	
21 7515BLK	Handle Keeper Assembly (For #4077 & #4077-1 Lock Assemblies) Top Coated Black Enamel	
22 232323	"Do Not Move" Decal - Premasked	
23 10-1004-2	Cable Anchor Clevis Pin 1/4 X 7/8 Todco Xref item: 61026	
25 10-1002-9	Rivet, Steel 1/4 X 1-5/16 X 1/2" Head (For Cable Anchor)	
26 4004BLK	Cable Anchor Bracket - Top Coated Black Enamel	
27 4003	Bottom Roller Fixture Todco Xref item: 61352	
27 8814	Bottom Roller Fixture, High Strength, 2 Piece, Curbside Todco Xref item: 70123-1	
27 8813	Bottom Roller Fixture, High Strength, 2 Piece, Roadside Todco Xref item: 70123-2	
28 10-1002-23	Rivet, Stainless Steel 1/4 X 1-1/32 X 3/4" Head (Used On Hinges, Top Brackets, Grab Handle & Top Seal)	
28 10-1002-3	Rivet, Steel 1/4 X 1 X 3/4" Head (Used On Hinges, Top Brackets, Grab Handle & Top Seal) Todco Xref item: 80841	
29 8656	End Hinge - High Strength Todco Xref item: 70236	
30 4012	Center Hinge Todco Xref item: 61196	
30 8654	Center Hinge High Strength Todco Xref item: 70238	
31 10-1002-43	Rivet, Stainless Steel 1/4 X 1-3/32 X 3/4" Head (For Bottom Brackets & End Hinges)	
31 10-1002-36	Rivet, Steel 1/4 X 1-1/8 X 3/4" Head (For Bottom Brackets & End Hinges) Todco Xref item: 80842	
32 6	Spacer Washer (For First & Last Panel Joint Rollers)	
33 4026	Roller - 1" Precision Steel	
33 4027	Roller - 1" Stamped Steel Todco Xref item: 61174	
34 4038	Adjustable Top Fixture Slide (for #4051) Todco Xref item: 69431	
34 8652	Adjustable Top Fixture Slide High Strength (for #4051) Todco Xref item: 70233	

Item Part No. Description General Purpose Aluminum-Clad

35	4051	Adjustable Top Fixture Base (for #4038) Todco Xref item: 69432
36	10-1073-2	Adjustable Top Fixture Bolt 3/8-16 X 1/2" (for #4051) Todco Xref item: 89049
37	4039	Adjustable Top Fixture Assembly Todco Xref item: 69433
38	4032	Top Seal - Reinforced Rubber Rolled In Steel Jacket (Specify Length) Todco Xref item: 61402
39	4090	Balancer Assembly - Complete (Without#4029 & #4028 Brackets,#4033 Bearing Assy- Specify Door Dimensions) Todco Xref item: 59174
40	4028	Balancer Mounting Bracket - Right Hand - Roadside and Center Todco Xref item: 51036-2
41	4029	Balancer Mounting Bracket - Left Hand - Curbside Todco Xref item: 51036-1
42	10-1063-1	Self Locking Nut 5/16-18 Thread (For #10-1010-8, #10-1010-9) Todco Xref item: 80352-518
43	10-1010-8	Hex Head Capscrew 5/16-18 X 5/8" (for Bearing Retainer) Todco Xref item: 89043-1
44	4023	Balancer Bearing Retainer
46	4033	Bearing and Retainer Assembly (#4023 & 10-1025-4) Todco Xref item: 51038
47	4128COM	Cable Drum - 3" Diameter - Roadside - Right Hand - 105 to 144" Door With Screws Todco Xref item: 59033-2
48	4127COM	Cable Drum - 3" Diameter - Curbside - Left Hand - 105 to 144" Door With Screws Todco Xref 59033-1
47	4014COM	Cable Drum - 3" Diameter - Roadside - Right Hand - up to 105" Door With Screws Todco Xref item: 51040-1
48	4013COM	Cable Drum - 3" Diameter - Curbside - Left Hand - up to 105" Door With Screws Todco Xref item: 51040-2
49	2699	Hex Head Set Screw 3/8-16 X 5/8" (for Cable Drums & Winding Plug) Todco Xref item: 803002414
50	4050COM	Spring Winding Plug - 1-3/4" With Screws Todco Xref item: 51041
52	2701	Torsion Spring Right Hand - 1-3/4" Inside Diameter (Specify Wire Thickness and Length) Todco Xref item: 51042
53	3100	Counter Balancer Shaft 1" Diameter (Specify Length) Todco Xref item: 51037
54	10-1010-31	Hex Head Capscrew 1/4-20 X 1-3/4" (for Horizontal Track Stop) Todco Xref item: 80105-416
55	4020-1	Cable Assembly Stainless Steel 1/4" Eye - 115" (For Doors Up To 105" High) Todco Xref item: 59004
56	10-1010-9	Hex Head Capscrew 5/16-18 X 1" (for Anchor Plug) Todco Xref item: 8105-508
57	4024	Catch Box Todco Xref item: 69341
58	4204	1" Rubber Track Stop Bumper
59	10-1006-1	Steel Washer 1/4 X 3/4" (for Fastening Rivets on Inside Panel)

ColdSaver™

Low-Temp Insulated Reefer Door



Visit our Search Parts page at www.whitingdoor.com.

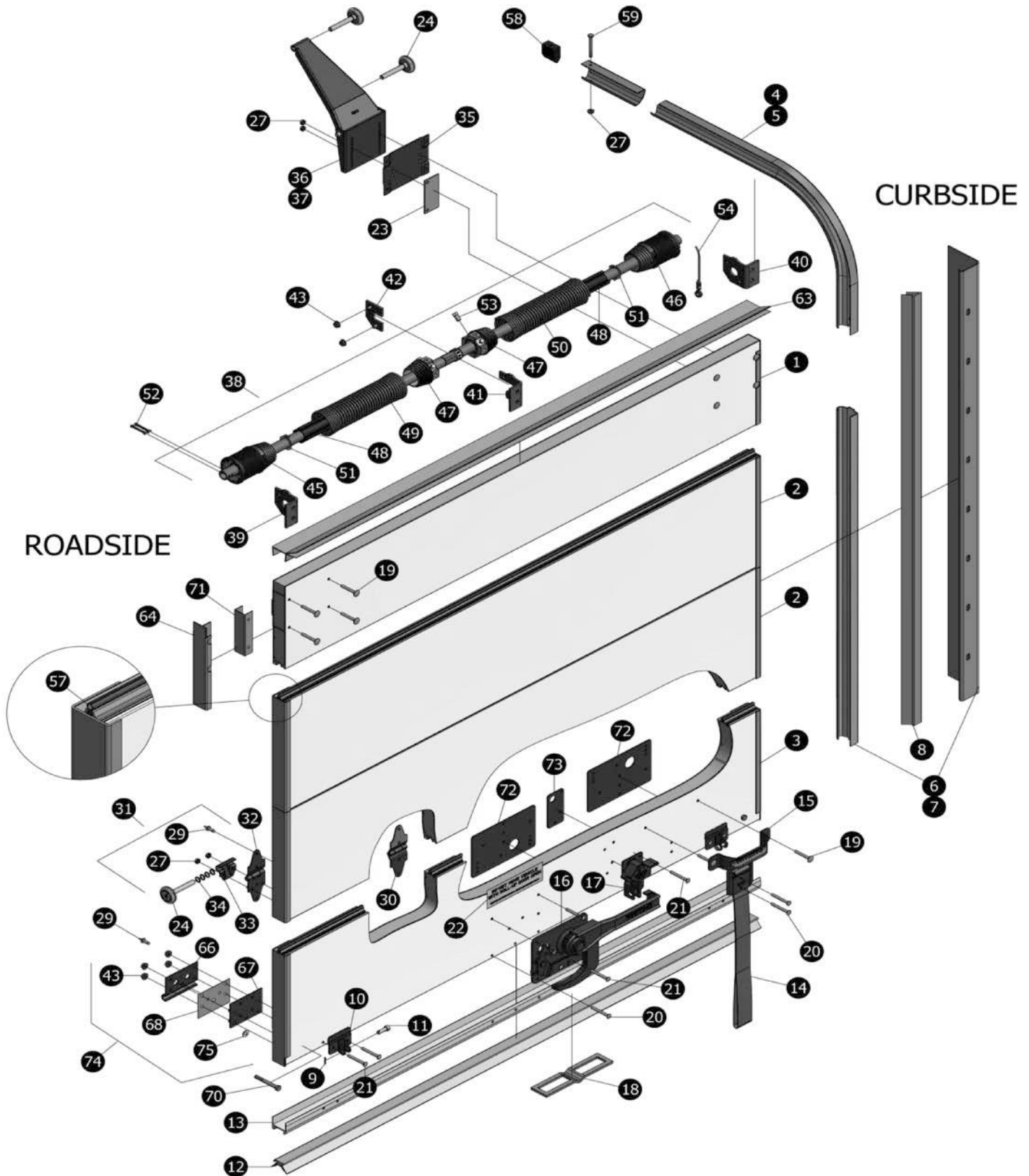
1	2239-1	Top Panel Complete - #5464 Top Seal, #1920 Top Bracket Mounting Plates (Specify Height and Width)
1	2239	Top Panel Seal Only - #5464 Top Seal, (Specify Height and Width)
2	2236	Intermediate Panel - 12-1/2" High (Specify Width)
2	2237	Intermediate Panel - 13-1/2" High (Specify Width)
2	2238	Intermediate Panel - 14-1/2" High (Specify Width)
3	2234-1	Bottom Complete With Lock - 12-1/2" High (#77 Standard-Specify Width)
3	2232-1	Bottom Complete With Lock - 13-1/2" High (#77 Standard-Specify Width)
3	2235-1	Bottom Complete With Lock - 14-1/2" High (#77 Standard-Specify Width)
3	2234-2	Bottom With Hardware Less Lock - 12-1/2" High (Specify Width)
3	2232-2	Bottom With Hardware Less Lock - 13-1/2" High (Specify Width)
3	2235-2	Bottom With Hardware Less Lock - 14-1/2" High (Specify Width)
3	2234	Bottom With Seal Only - 12-1/2" High (Specify Width)
3	2232	Bottom With Seal Only - 13-1/2" High (Specify Width)
3	2235	Bottom With Seal Only - 14-1/2" High (Specify Width)
4	11-4	2" Horizontal Track - 10" Radius - 90 Degree - Curbside (Specify Length)
5	11-5	2" Horizontal Track - 10" Radius - 90 Degree - Roadside (Specify Length)
4	11-2	2" Horizontal Track - 8" Radius - 90 Degree - Curbside (Specify Length)
5	11-3	2" Horizontal Track - 8" Radius - 90 Degree - Roadside (Specify Length)
6	2270	Vertical Track & Angle Assembly - Curbside (#1796, #1031 - Specify Length of Both)
7	2271	Vertical Track & Angle Assembly - Roadside (#1796, #1031 - Specify Length of Both)
8	7470/93	Vinyl Side Seal
8	7470/100	Vinyl Side Seal
8	7470/115	Vinyl Side Seal
8	6589	Brush Side Seal Assembly (#5833 Brush Seal, #6590 Seal Retainer - Specify Length)
9	10-1009-7	Cotter Pin 1/8 X 3/4" (For #5803 Cable Anchor)
9	10-1009-19	Cotter Pin 1/8 X 3/4" Stainless Steel (For #5803 Cable Anchor)
10	5803	Cable Anchor
11	10-1004-1	Clevis Pin 5/16 X 1" (For #5803 Cable Anchor)
11	10-1004-5	Clevis Pin 5/16 X 1" Stainless Steel (For #5803 Cable Anchor)
12	7145	Bottom Seal Vinyl Snap-in For #7144 (Specify Length)
13	9723	Pull Down Strap (For Doors up to 96")
13	9723-1	Pull Down Strap (For Doors over 96")
14	10-1054-15	Rivet Pull Type Stainless Steel 1/4"
14	10-1054-1	Rivet Pull Type Steel 1/4"
15	1715-10	Grab Handle (4 Mounting Holes)
16	77	Lock Assembly Standard - No Keeper
16	8718	Lock Assembly With Fallaway Cam Inside Recessed Pull Handle - No Keeper
16	5681	Lock Assembly With Fallaway Cam Inside Screw Release Handle - No Keeper
16	3225	Lock Assembly With Inside Operating Release Handle - No Keeper
16	77-1	Lock Assembly With Offet Cam - No Keeper

Item Part No.	Description	ColdSaver
17 7515	Keeper Assembly (For #77,#77-1,#5681,#8718)	
17 7535-3	Keeper Assembly With Inside Operation Release Handle (For #3225)	
18 2804	Latch Plate Standard	
19 232361	"Do Not Move" Decal - Premasked	
23 10-1022-1	Keps Nut 1/4-20 (For Hinges, Top Bracket, Track Bolt)	
24 3228-1	2 "Nylon Roller - Shielded	
24 3228-3	2" Nylon Roller - Stainless Steel 3" Shaft	
24 3228	2" Nylon Roller - Standard	
24 2996	2" Steel Roller - 3" Shaft	
24 2996-3	2" Steel Roller - 5" Shaft	
24 2996-2	2" Steel Roller - Stainless Steel 3" Shaft	
26 1209	Roller End Hinge Assembly - Complete (#1207, #1208, #10-1022-1)	
27 1208	Roller End Hinge Cover	
28 1207	Roller End Hinge	
29 6	Spacer Washer (For First & Last Panel Joint Rollers)	
30 15	Center Hinge	
33 1336-1	Top Closure Bracket - Curbside (For 10" Radius Horizontal Track)	
34 1336-3	Top Closure Bracket - Curbside (For 8" Radius Horizontal Track)	
34 1336-2	Top Closure Bracket - Roadside (For 10" Radius Horizontal Track)	
34 1336-4	Top Closure Bracket - Roadside (For 8" Radius Horizontal Track)	
35 1920	Top Closure Mounting Bracket	
36 83	Track Stop Rubber	
37 10-1010-3	Track Stop Bolt 1/4-20 x 2-1/2"	
38 7176	Balancer Assembly - Complete (Without Brackets & Clamp)	
38 2376	Balancer Assembly - Complete (Without Brackets & Clamp)	
39 7205	Balancer Bracket for #7176 Balancer - Roadside - (For use with 7176 balancer)	
40 7206	Balancer Bracket for #7176 Balancer - Curbside - (For use with 7176 balancer)	
39 2524	Balancer Bracket - Roadside - (For use with 2376 balancer)	
40 2523	Balancer Bracket - Curbside - (For use with 2376 balancer)	
41 7207	Balancer Bracket - Center (For #7176)	
41 2525	Balancer Bracket - Center - (For use with 2376 balancer)	
42 2526	Balancer Clamp - Center (For #2376, #7176)	
43 10-1063-1	Self Locking Nut 5/16-18 Thread (For #2526, #5600)	
43 10-1063-4	Self Locking Nut Stainless Steel 5/16-18 Thread (For #10-1010-43 Bottom Bracket)	
44 2528	Balancer Shaft (For #2376, #7176 - Specify Length Usually Door Width)	
45 7097COM	Cable Drum and Bearing Assembly - Roadside - (For use with 7176 balancer)	
46 7096COM	Cable Drum and Bearing Assembly - Curbside - (For use with 7176 balancer)	
45 2547	Cable Drum and Bearing Assembly - Roadside (Stamped 2901) - (For use with 2376 balancer)	
46 2548	Cable Drum and Bearing Assembly - Curbside (Stamped 2902) - (For use with 2376 balancer)	
47 7550COM	Winding Cone With Screws - Roadside (For #7176)	

Item Part No.	Description	ColdSaver
47 7549COM	Winding Cone - Curbside - (For use with 7176 balancer)	
47 2518COM	Winding Cone (For use with 2376 Balancer)	
48 7232	Spring Spacer for #7176 Balancer - (For use with 7176 balancer)	
48 2471	Spring Spacer (Relaxed Spring Length + 4-1/4" For #2376)	
49 2712	Torsion Spring - 2 5/8" Inside Diameter - Roadside - Left Hand Wound (Specify wire size and length) - (For use with 7176 balancer)	
50 2713	Torsion Spring - 2 5/8" Inside Diameter - Curbside - Right Hand Wound (Specify wire size and length) - (For use with 7176 balancer)	
49 2704	Torsion Spring - 2 3/16" Inside Diameter - Roadside - Left Hand Wound (Specify wire size and length) - (For use with 2376 balancer)	
50 2705	Torsion Spring - 2 3/16" Inside Diameter - Curbside - Right Hand Wound (Specify wire size and length) - (For use with 2376 balancer)	
51 2522	Thrust Washer (For #2376, #7176)	
52 10-1009-8	Cotter Pin 3/16 X 1-1/2" (For #2376, #7176)	
53 2699	2699 Set Screw 3/8-16 X 5/8" (For Winding Cones)	
54 1-11	Cable Assembly Stainless Steel 5/16" Eye - 110" (For Doors Up To 96" High)	
54 1-4	Cable Assembly Stainless Steel 5/16" Eye - 130" (For Doors 96 To 119" High)	
57 8331	Top Brush Assembly (#5843 Brush Seal, #7061 Seal Retainer - Specify Length)	
57 5464	Top Seal And Cap Vinyl (Specify Length)	
58 5600	Bottom Roller Bracket Assembly (#5509, #5504, #5502)	
59 5502	Bottom Roller Bracket Cover	
60 5509	Bottom Roller Bracket	
61 5504	Bottom Roller Wear Plate	
63 10-1010-43	Bolt Stainless Steel 5/16-18 X 2-3/4" (For Bottom Roller Bracket)	
64 7144	Aluminum Bottom Channel With Thermal Barrier (For #7145 - Specify Length)	
65 7952	Vinyl Gasket (For Under Bottom Bracket)	
66 7953	Vinyl Gasket (For Under Hinges)	
67 10-1006-27	Stainless Steel Washer (For #10-1010-43 Bottom Bracket)	

TempGuard™

Medium-Temp Insulated Reefer Door



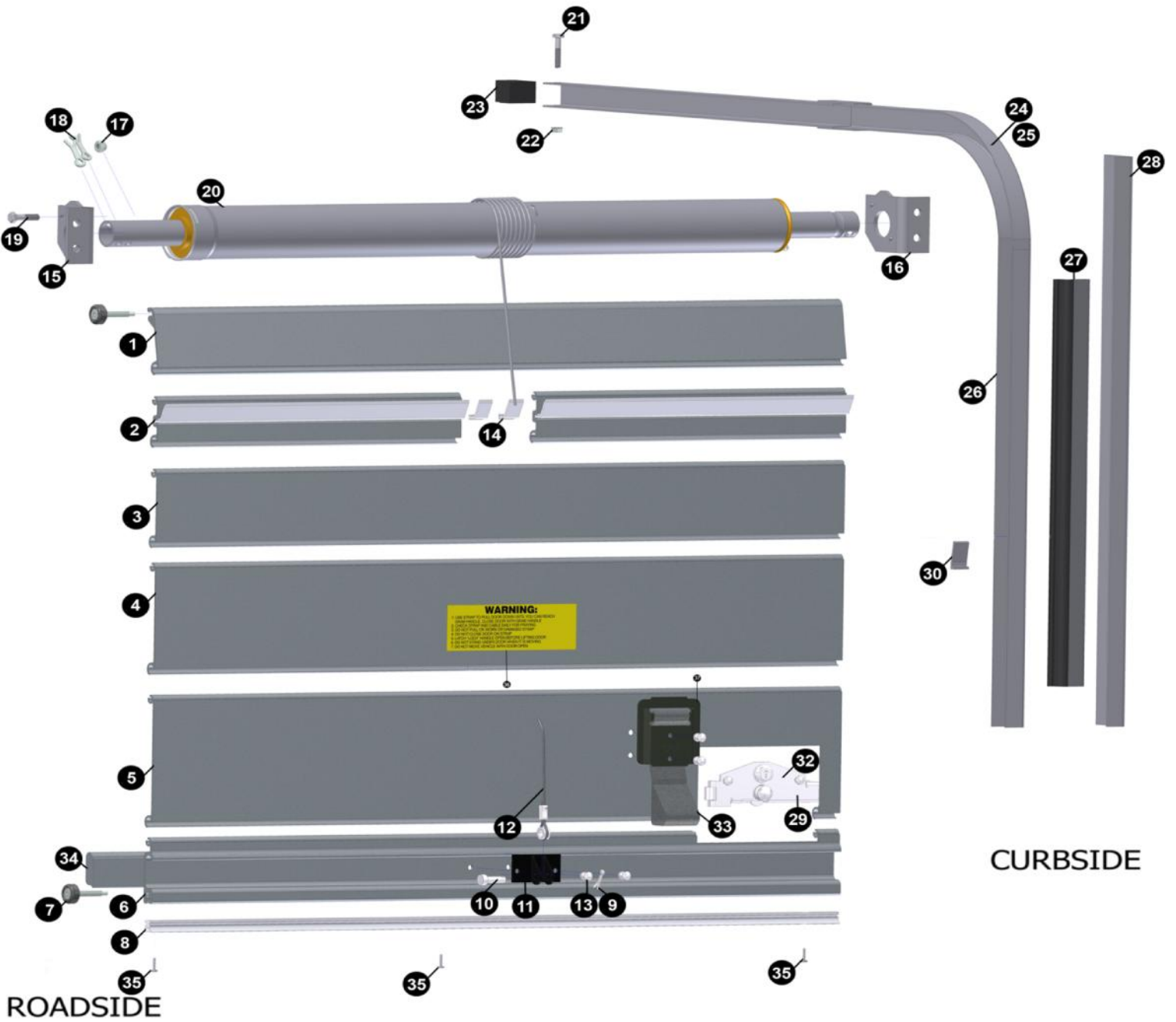
Visit our Search Parts page at www.whitingdoor.com.

Item	Part No.	Description	TempGuard
1	7534	Top Panel Seal Only - #5463 Top Seal, (Specify Height and Width)	
1	7534-1	Top Panel Complete - #5463 Top Seal, #1920 Top Bracket Mounting Plates (Specify Height and Width)	
2	6249	Intermediate Panel - 13-5/16" High (Specify Width)	
2	6248	Intermediate Panel - 15-5/16" High (Specify Width)	
3	7543-1	Bottom With Seal Only - 15-5/16" High (Specify Width)	
3	7544	Bottom With Hardware Less Lock - 13-5/16" High (Specify Width)	
3	7544-1	Bottom With Hardware Less Lock - 15-5/16" High (Specify Width)	
3	7545	Bottom Complete With Lock - 13-5/16" High (#77 Standard-Specify Width)	
3	7545-1	Bottom Complete With Lock - 15-5/16" High (#77 Standard-Specify Width)	
3	7543	Bottom With Seal Only-13-5/16" High (Specify Width)	
4	11-2	2" Horizontal Track - 8" Radius - 90 Degree - Curbside (Specify Length)	
5	11-3	2" Horizontal Track - 8" Radius - 90 Degree - Roadside (Specify Length)	
4	11-4	2" Horizontal Track - 10" Radius - 90 Degree - Curbside (Specify Length)	
5	11-5	2" Horizontal Track - 10" Radius - 90 Degree - Roadside (Specify Length)	
6	2268	Vertical Track & Angle Assembly - Curbside (#1796, #1031 - Specify Length Of Both)	
7	2269	Vertical Track & Angle Assembly - Roadside (#1796, #1031 - Specify Length Of Both)	
8	7470/93	Vinyl Side Seal	
8	7470/100	Vinyl Side Seal	
8	7470/115	Vinyl Side Seal	
8	6589	Brush Side Seal Assembly (#5833 Brush Seal, #6590 Seal Retainer - Specify Length)	
9	10-1009-7	Cotter Pin 1/8 X 3/4" (For #5803 Cable Anchor)	
9	10-1009-19	Cotter Pin 1/8 X 3/4" Stainless Steel (For #5803 Cable Anchor)	
10	5803BLK	Cable Anchor Top Coated Black Enamel	
11	10-1004-5	Clevis Pin 5/16 X 1" Stainless Steel(For #5803 Cable Anchor)	
11	10-1004-1	Clevis Pin 5/16 X 1" (For #5803 Cable Anchor)	
12	7147	Bottom Seal Vinyl Snap-in For #7146 (Specify Length)	
13	7146	Aluminum Bottom Channel (For #7147 - Specify Length)	
14	9723BLK	Pull Down Strap - Top Coated Black Enamel (For Doors up to 96")	
14	9723-1BLK	Pull Down Strap - Top Coated Black Enamel (For Doors over 96")	
15	1715BLK	Grab Handle - Top Coated Black Enamel	
16	77BLK	Lock Assembly Standard - No Keeper Top Coated Black Enamel	
16	77-1BLK	Lock Assembly With Offset Cam - No Keeper Top Coated Black Enamel	
16	3224BLK	Lock Assembly With Inside Operating Release Handle - No Keeper Top Coated Black Enamel	
16	5677BLK	Lock Assembly With Fallaway Cam Inside Screw Release Handle - No Keeper Top Coated Black Enamel	
16	8757BLK	Lock Assembly With Fallaway Cam Inside Recessed Pull Handle - No Keeper Top Coated Black Enamel	
17	7515BLK	Keeper Assembly Top Coated Black Enamel (For #77, #77-1, #5677, #8757)	
17	7535-2BLK	Keeper Assembly With Inside Operation Release Handle Top Coated Black Enamel (For #3224)	
18	2804	Latch Plate Standard	

Item Part No.	Description	TempGuard
19	10-1002-32	Rivet, Stainless Steel 1/4 X 1-7/8 X 3/4" Head (For Grab Handle Top Bracket)
20	10-1002-38	Rivet, Stainless Steel 1/4 X 2-1/8 X 1/2" Head (For Strap Lock Assy)
21	10-1002-33	Rivet, Stainless Steel 1/4 X 2 X 1/2" Head (For Lock Keeper, Cable Anchor)
22	232361	"Do Not Move" Decal - Premasked
23	5628	Spacer Shim Under Top Mounting Bracket
24	3228	2" Nylon Roller - Standard
24	3228-1	2" Nylon Roller - Shielded
24	3228-3	2" Nylon Roller - Stainless Steel 3" Shaft
24	2996	2" Steel Roller - 3" Shaft
24	2996-2	2" Steel Roller - Stainless Steel 3" Shaft
24	2996-3	2" Steel Roller - 5" Shaft
27	10-1022-1	Keps Nut 1/4-20 (For Hinges, Top Bracket, Track Bolt)
29	10-1054-1	Rivet Pull Type Steel 1/4"
30	15	Center Hinge
31	1209	Roller End Hinge Assembly - Complete (#1207, #1208, #10-1022-1)
32	1207	Roller End Hinge
33	1208	Roller End Hinge Cover
34	6	Spacer Washer (For First & Last Panel Joint Rollers)
35	1920	Top Closure Mounting Bracket
36	1336-3	Top Closure Bracket - Curbside (For 8" Radius Horizontal Track)
36	1336-1	Top Closure Bracket - Curbside (For 10" Radius Horizontal Track)
37	1336-2	Top Closure Bracket - Roadside (For 10" Radius Horizontal Track)
37	1336-4	Top Closure Bracket - Roadside (For 8" Radius Horizontal Track)
38	2376	Balancer Assembly - Complete (Without Brackets & Clamp)
39	2524	Balancer Bracket - Roadside - (For use with 2376 balancer)
40	2523	Balancer Bracket - Curbside - (For use with 2376 balancer)
41	2525	Balancer Bracket - Center - (For use with 2376 balancer)
42	2526	Balancer Clamp - Center
43	10-1063-4	Self Locking Nut Stainless Steel 5/16-18 Thread (For #10-1010-42 Bottom Bracket)
44	2528	Balancer Shaft (Specify Length Usually Door Width)
45	2547	Cable Drum and Bearing Assembly - Roadside (Stamped 2901) - (For use with 2376 balancer)
46	2548	Cable Drum and Bearing Assembly - Curbside (Stamped 2902) - (For use with 2376 balancer)
47	2518COM	Winding Cone (For use with 2376 Balancer)
48	2471	Spring Spacer (Relaxed Spring Length + 4-1/4")
49	2704	Torsion Spring - 2 3/16" Inside Diameter - Roadside - Left Hand Wound (Specify wire size and length) - (For use with 2376 balancer)
50	2705	Torsion Spring - 2 3/16" Inside Diameter - Curbside - Right Hand Wound (Specify wire size and length) - (For use with 2376 balancer)
51	2522	Thrust Washer
52	10-1009-8	Cotter Pin 3/16 X 1-1/2" (For #2376)
53	2699	2699 Set Screw 3/8-16 X 5/8" (For Winding Cones)

Item	Part No.	Description	TempGuard
54	1-4	Cable Assembly Stainless Steel 5/16" Eye - 130" (For Doors 96 To 119" High)	
54	1-11	Cable Assembly Stainless Steel 5/16" Eye - 110"(For Doors Up To 96" High)	
57	2501-0	Inter Section Seal (Specify Length)	
58	83	Track Stop Rubber	
63	8535	Top Brush Assembly (#5843 Brush Seal, #7271 Seal Retainer - Specify Length)	
63	5463	Top Seal And Cap Vinyl (Specify Length)	
64	5453-1	End Cap (For 13-5/16" Panel)	
64	5453-2	End Cap (For 15-5/16" Panel)	
66	5502	Bottom Roller Bracket Cover	
67	5509	Bottom Roller Bracket	
68	5504	Bottom Roller Wear Plate	
70	10-1010-42	Bolt Stainless Steel 5/16-18 X 2-1/2" (For Bottom Roller Bracket)	
71	7420	Reinforcement Channel - 5" (For Top Panel End Under Top Closure Mounting Bracket)	
72	7857	Reinforcement Plate (For Lock And Grab Handle Inside Of Bottom Panel)	
73	8809	Reinforcement Plate (For Lock Keeper Inside Of Bottom Panel)	
74	5600	Bottom Roller Bracket Assembly (#5509, #5504, #5502)	
75	10-1006-27	Stainless Steel Washer (For #10-1010-43 Bottom Bracket)	

Single Wall Extruded Aluminum Door



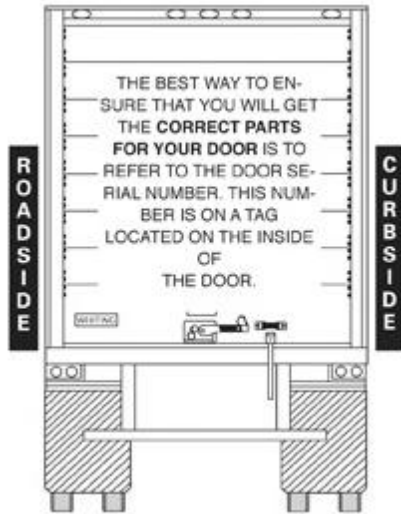
Item Part No.	Description	Single Wall Extruded Aluminum Door
----------------------	--------------------	---

1	1025	Top Panel 3" High (Specify Width)
1	1615-1	Top Panel 3" High With Optional Cable Hook Up For Pull From Top Panel (Specify Width)
2	1707	Top Panel Seal Retainer 2" High (Used with #2037 Top Seal) (Specify Width)
3	1028	Intermediate Panel 3-3/8" High (Specify Width)
4	1266	Intermediate Panel 5" High (Specify Width)
5	2118	Intermediate Panel 6" High (Specify Width)
6	1026	Bottom Panel 3" High With Built In Lift Rail (Specify Width)
6	5970	Bottom Panel 6" High Flat Front (Specify Width)
7	1157	Roller 1" Knurled Shaft
7	1157-1	Roller 7/8" Knurled Shaft
7	3500	Roller 1" Screw Shaft
7	3580	Roller 7/8" Screw Shaft
8	1192	Bottom Seal
9	10-1009-7	Cotter Pin 1/8 X 3/4"
10	10-1004-1	Clevis Pin 5/16 X 1"
11	30-1	Cable Anchor
12	1-1	Cable Assembly Stainless Steel 5/16" Eye - 125"
13	10-1002-69	Rivet, Steel 1/4 X 3/8 X 7/16" Head
14	2037	Top Seal Gray (Used With #1707 Top Seal Retainer)
14	2037-1	Top Seal Black (Used With #1707 Top Seal Retainer)
15	153	Balancer Bracket - Roadside
16	152	Balancer Bracket - Curbside
17	10-1033-2	Self Locking Nut 5/16-18 Thread
18	10-1009-13	Cotter Pin 5/16 X 1-3/4"
19	10-1010-12	Hex Head Bolt 5/16-18 x 1-1/4"
20	91	Balancer Assembly - Enclosed Single Spring (Less Items 12 and 15-19) Specify Spring, Shaft Size
21	10-1010-4	Track Bolt 1/4-20 Thread X 1-1/2"
22	10-1022-1	Self Locking Nut 1/4-20 Thread
23	1971	Track Stop Rubber
24	1194-1	1" Horizontal Track - 6-1/2" Radius - 90 Degree - Roadside (Specify Length)
25	1194-2	1" Horizontal Track - 6-1/2" Radius - 90 Degree - Curbside (Specify Length)
24	1195-1	1" Horizontal Track - 8-1/2" Radius - 90 Degree - Roadside (Specify Length)
25	1195-2	1" Horizontal Track - 8-1/2" Radius - 90 Degree - Curbside (Specify Length)
26	1196	1" Vertical Straight Track (Specify Length)
27	9900	Side Seal Vinyl Drive-In (Specify Length)
28	1711	Mounting Angle (Specify Length)
29	1000	Lock Assembly Push Button With Locking Cylinder
29	1000-1	Lock Assembly Push Button Without Locking Cylinder
29	125	Lock Assembly Slam Type Use With 1026 Bottom Panel
29	6977WHT	Lock Assembly Outside Cam Use With 5970 Bottom Panel

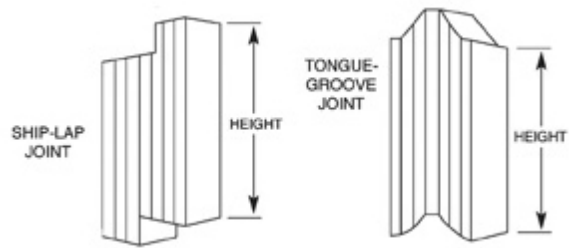
Item Part No.	Description	Single Wall Extruded Aluminum Door
----------------------	--------------------	---

29A	6978WHT	Handle Keeper For 6977 Lock Assembly
30	1003	Lock Catch
30	216	Lock Latch Plate For 125 Slam Lock
30	2804	Lock Latch Plate For 6977 Lock Assembly
32	10-1014-8	Lock Cylinder With Keys
33	9723	Pull Down Strap (For Doors up to 96")
34	3592	Rubber Water Plug For 1026 Bottom Panel Ends
35	10-1050-1	Annular Nail For Bottom Seal
36	232323	"Do Not Move" Decal - Premasked
37	10-1054-18	Pull Type Rivet 1/4" For Pull Strap

Tips for Ordering the CORRECT Parts the First Time



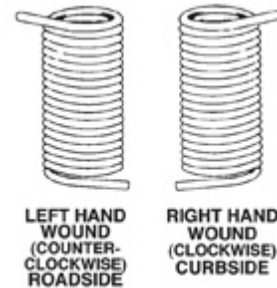
PANELS



TRACK

Always refer to door serial number when ordering track.

SPRINGS



SPRINGS FOR # 2376 BALANCERS (2 Spring)

3/4" Plastic Premium Dry Freight

DOOR SIZE LIMITS	SHAFT MIN.	SPRING SIZE	COLOR CODE
60 – 72" W to 90" H	61"	2 3/16 x .156 x 19 1/2"	Dark Gray
72 – 81" W to 96" H	70"	2 3/16 x .171 x 24"	Light Yellow
81 – 86" W to 102" H	76"	2 3/16 x .177 x 27"	Light Blue
85 – 91" W to 108" H	80"	2 3/16 x .182 x 29"	Light Green
87 – 91" W to 114" H	87"	2 3/16 x .187 x 32 1/2"	White
91 – 98" W to 102" H	84"	2 3/16 x .187 x 31"	White
91 – 98" W to 120" H	90"	2 3/16 x .192 x 34"	Red

Wind Spring with door open (3 1/2 turns)

SPRING FOR #4090 BALANCERS (SINGLE SPRING)

MIN. BALANCER SHAFT LENGTH = DOOR WIDTH

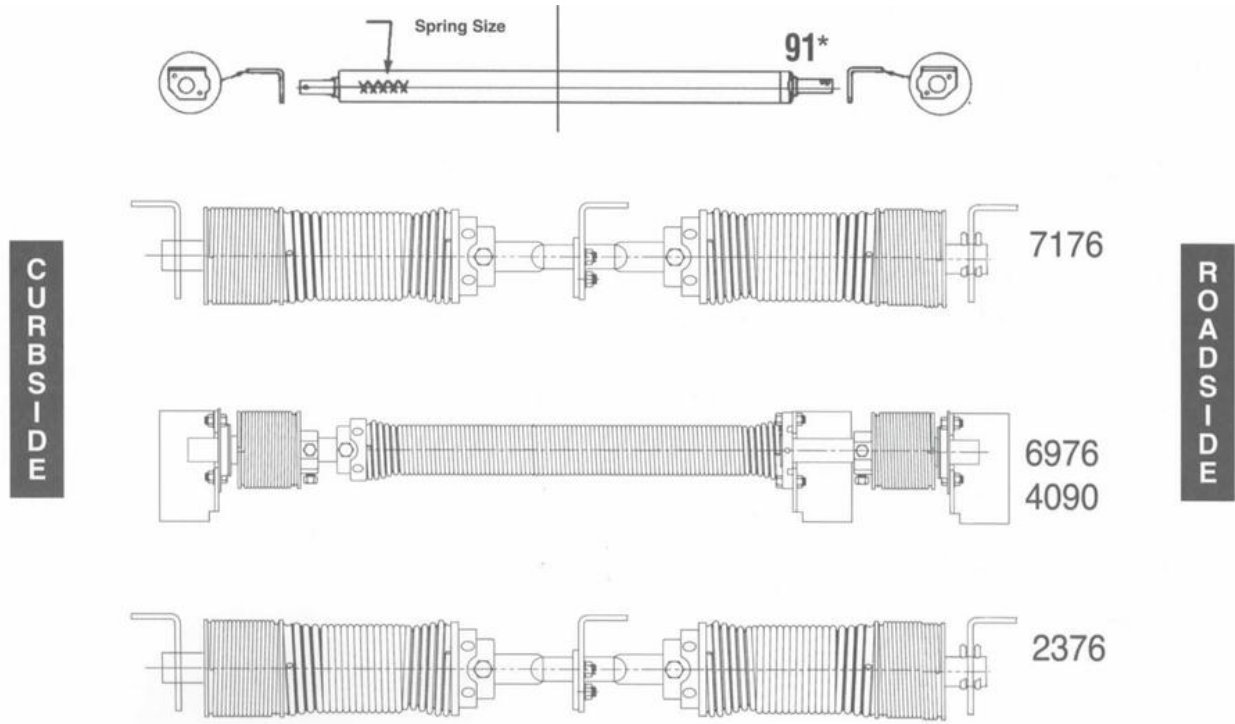
3/4" Plastic General Purpose Door

DOOR SIZE LIMITS	SHAFT MIN.	SPRING SIZE	COLOR CODE
78 – 84" W to 90" H	78-84"	1 3/4 x .225 x 43"	Dark Green
78 – 84" W to 105" H	78-84"	1 3/4 x .243 x 59"	Dark Yellow
84 – 90" W to 105" H	84-90"	1 3/4 x .243 x 57"	Dark Yellow
84 – 90" W to 120" H	84-90"	1 3/4 x .250 x 62"	Plain
91 – 98" W to 105" H	91-98"	1 3/4 x .250 x 60"	Plain
91 – 98" W to 120" H	91-98"	1 3/4 x .262 x 72"	Orange

Wind Spring with door closed

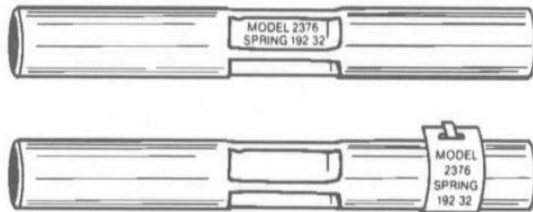
Number of Turns = Door Height / divided by 10 + 3

Balancers



*Door serial number is on metal tag on inside of top section to roadside.

All single spring balancers have left hand wound springs. Give spring size when ordering replacement balancers. Spring size is stamped on outer casing. Give door serial number or door type and size if spring size is not known.



- Spring length is measured when the spring is relaxed (Not stretched).
- Spring length and wire diameter can also be found stamped on the center of the balancer shaft, or on a tag also near the center of the shaft.

BALANCER TYPE	BALANCER NO.	BRACKETS			DRUM DIAMETER	DRUM LENGTH	OVERALL LENGTH
		CURB-SIDE	CENTER	ROAD SIDE			
Single Cable	91	152	-	153	2-5/8"	31"	39-5/8"
Double Cable	6976	4029	4028	4028	3-1/4	-	Door Width
Double Cable	4090	4029	4028	4028	3-1/4	-	Door Width
Double Cable	7176	7206	7207 & 2526	7205	3-1/4	-	Door Width Max.
Double Cable	2376	2523	2525 & 2526	2524	2-7/8	-	Door Width Max.

Notes:

Notes: