



**“You have to build a quality product
in order to stay in business,
Whiting will build quality products.”**

*—Business philosophy of Theo Whiting, on founding
Whiting Roll-up Door Manufacturing Corp. (1953)*



General Offices:
113 Cedar Street
Akron, New York 14001
Phone: (716) 542-5427
FAX: (716) 542-5947

Rialto, CA
Phone: (909) 877-0120
FAX: (909) 877-9180

St. Louis, MO
Phone: (314) 741-6880
FAX: (314) 741-7450

Manufacturers of:
SEA-LOK® Swing Doors
And these quality
Roll-up Doors:

- Whiting PREMIUM
- CARGOSAVER
- COLDSAVER
- TEMPGUARD
- HINGELESS TRUSS
- HINGED TRUSS
- GENERAL PURPOSE
- CARGOGUARD
- SINGLE WALL
EXTRUDED ALUMINUM

- ▶ e-mail: whitingdoor@webt.com
- ▶ Visit the most informative site in the trucking industry on the web at www.whitingdoor.com

WHITING

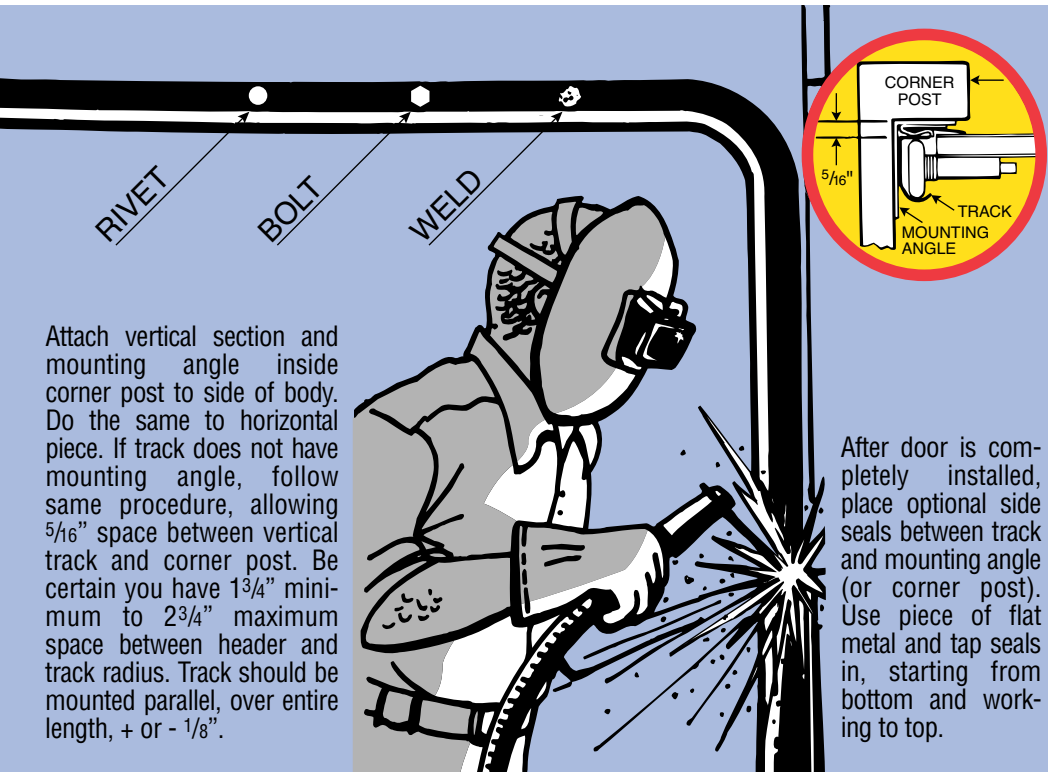
PREMIUM QUALITY ROLL-UP DOORS



You install them faster... easier... more economically!

Only six simple steps

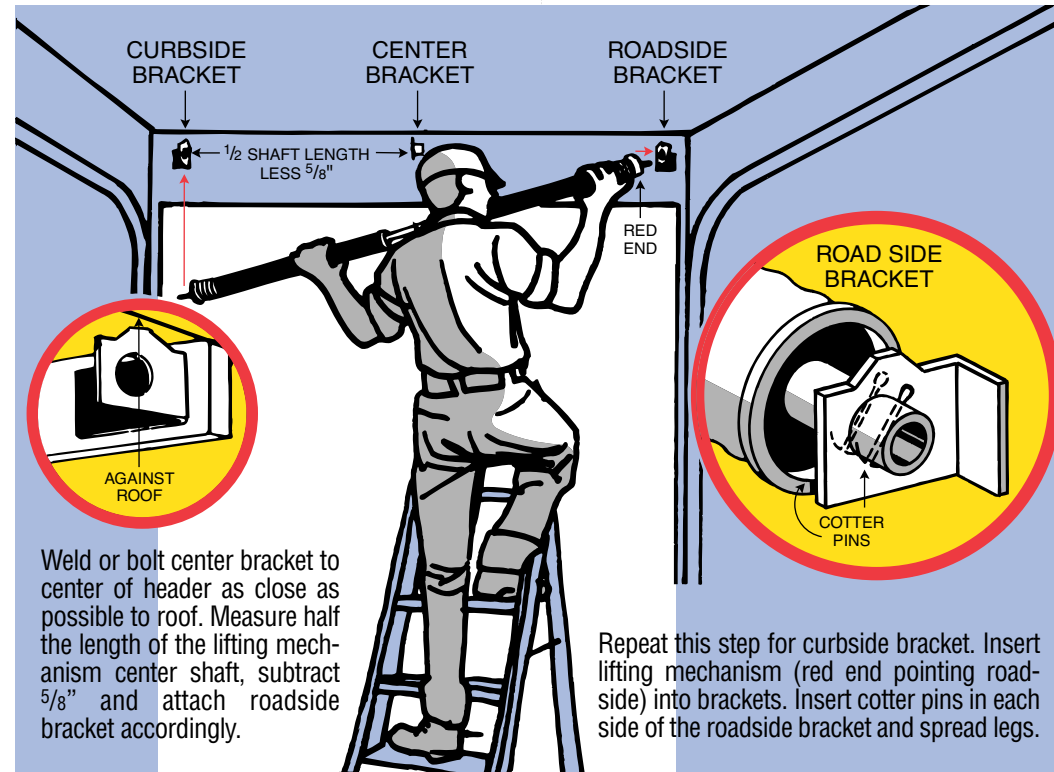
**WHITING
PREMIUM QUALITY
ROLL-UP DOORS**



Attach vertical section and mounting angle inside corner post to side of body. Do the same to horizontal piece. If track does not have mounting angle, follow same procedure, allowing $\frac{5}{16}$ " space between vertical track and corner post. Be certain you have $1\frac{3}{4}$ " minimum to $2\frac{3}{4}$ " maximum space between header and track radius. Track should be mounted parallel, over entire length, + or - $\frac{1}{8}$ ".

After door is completely installed, place optional side seals between track and mounting angle (or corner post). Use piece of flat metal and tap seals in, starting from bottom and working to top.

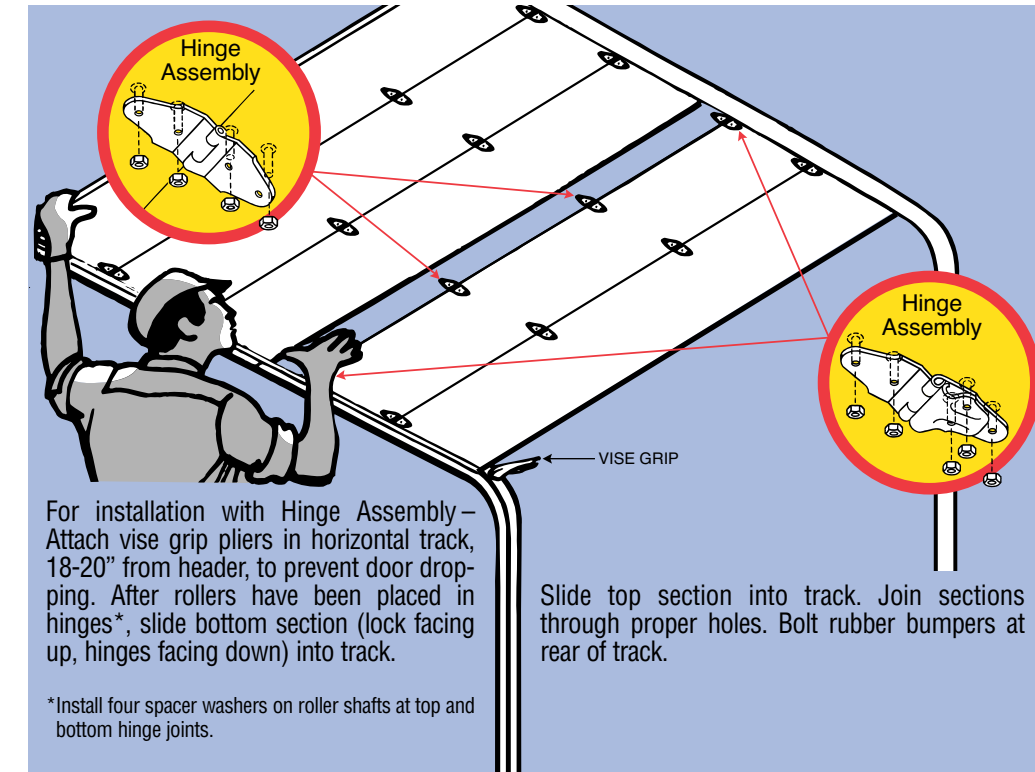
1 INSTALL TRACK



Weld or bolt center bracket to center of header as close as possible to roof. Measure half the length of the lifting mechanism center shaft, subtract $\frac{5}{8}$ " and attach roadside bracket accordingly.

Repeat this step for curbside bracket. Insert lifting mechanism (red end pointing roadside) into brackets. Insert cotter pins in each side of the roadside bracket and spread legs.

2 INSTALL LIFTING MECHANISM

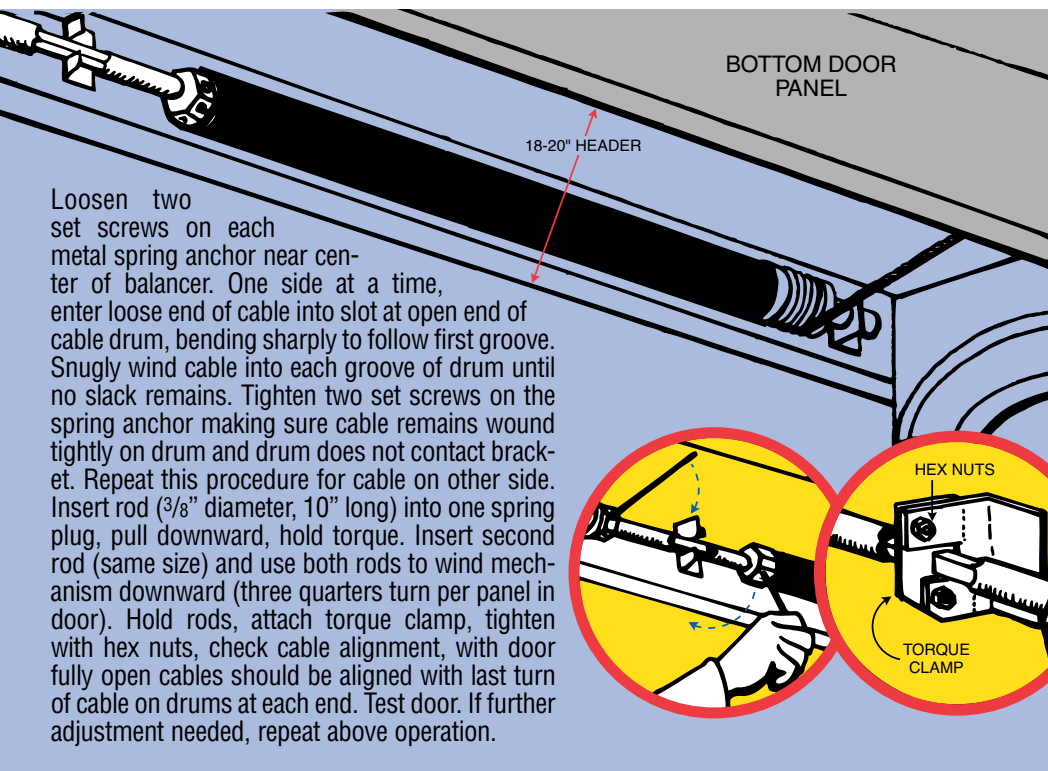


For installation with Hinge Assembly - Attach vise grip pliers in horizontal track, 18-20" from header, to prevent door dropping. After rollers have been placed in hinges*, slide bottom section (lock facing up, hinges facing down) into track.

Slide top section into track. Join sections through proper holes. Bolt rubber bumpers at rear of track.

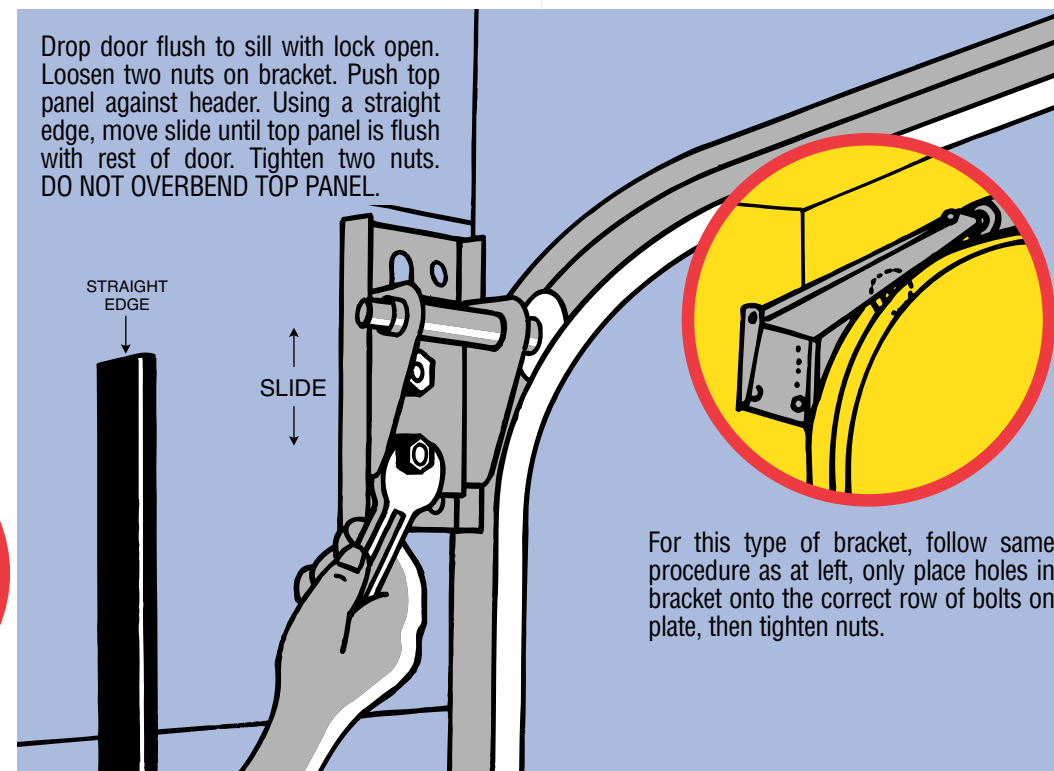
*Install four spacer washers on roller shafts at top and bottom hinge joints.

3 JOIN DOOR SECTIONS IN TRACK



Loosen two set screws on each metal spring anchor near center of balancer. One side at a time, enter loose end of cable into slot at open end of cable drum, bending sharply to follow first groove. Snugly wind cable into each groove of drum until no slack remains. Tighten two set screws on the spring anchor making sure cable remains wound tightly on drum and drum does not contact bracket. Repeat this procedure for cable on other side. Insert rod ($\frac{3}{8}$ " diameter, 10" long) into one spring plug, pull downward, hold torque. Insert second rod (same size) and use both rods to wind mechanism downward (three quarters turn per panel in door). Hold rods, attach torque clamp, tighten with hex nuts, check cable alignment, with door fully open cables should be aligned with last turn of cable on drums at each end. Test door. If further adjustment needed, repeat above operation.

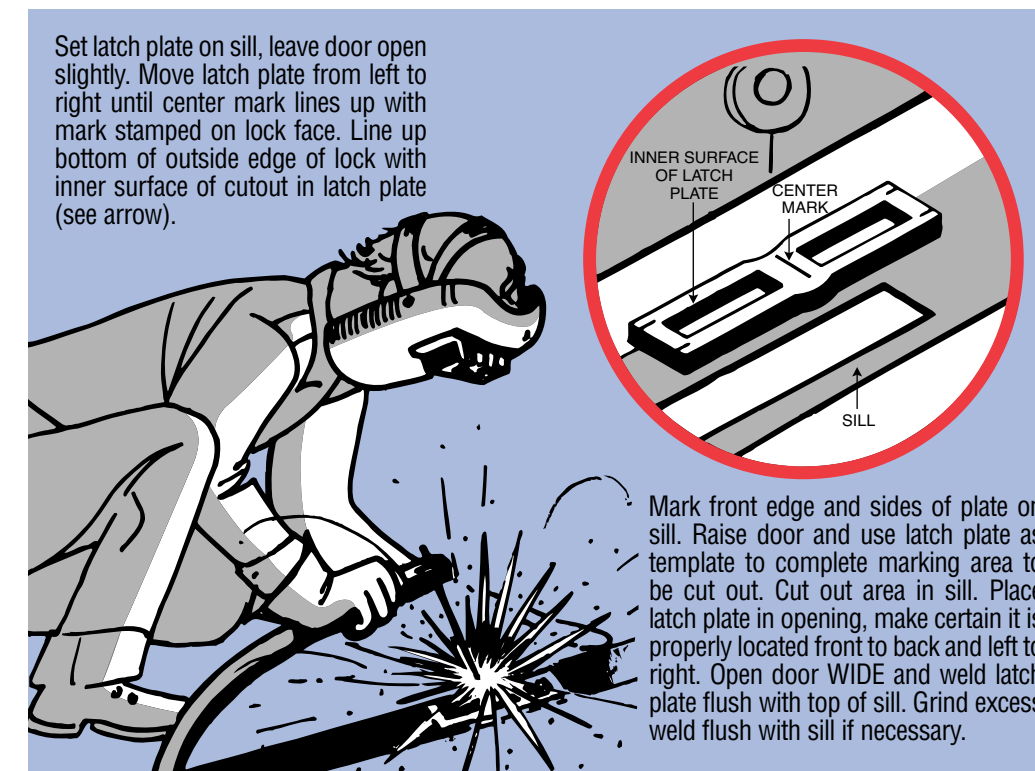
4 WIND LIFTING MECHANISM



Drop door flush to sill with lock open. Loosen two nuts on bracket. Push top panel against header. Using a straight edge, move slide until top panel is flush with rest of door. Tighten two nuts. DO NOT OVERBEND TOP PANEL.

For this type of bracket, follow same procedure as at left, only place holes in bracket onto the correct row of bolts on plate, then tighten nuts.

5 ATTACH TOP CLOSURE BRACKET



Set latch plate on sill, leave door open slightly. Move latch plate from left to right until center mark lines up with mark stamped on lock face. Line up bottom of outside edge of lock with inner surface of cutout in latch plate (see arrow).

Mark front edge and sides of plate on sill. Raise door and use latch plate as template to complete marking area to be cut out. Cut out area in sill. Place latch plate in opening, make certain it is properly located front to back and left to right. Open door WIDE and weld latch plate flush with top of sill. Grind excess weld flush with sill if necessary.

6 INSTALL LATCH PLATE