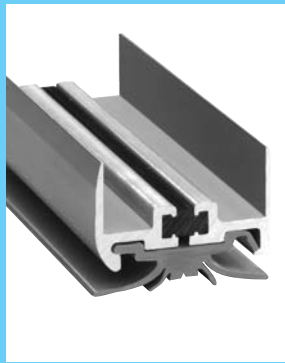
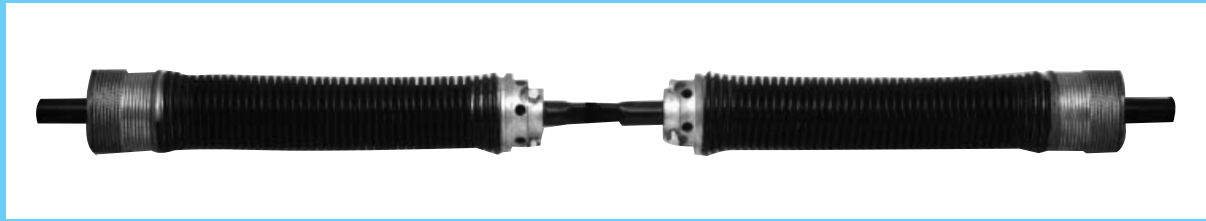
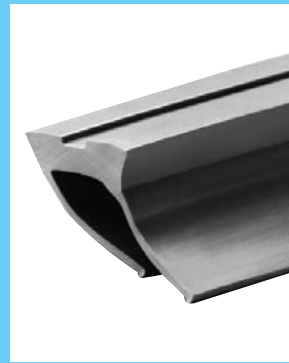


Heavy duty 2 cable balancer with independent spring for each cable. Springs treated with rust preventative.



Bottom channel has thermal break and runs entire width of door.



Replaceable side seals have two legs creating a double seal.



End hinge and roller carrier. Removable cap allows roller change without removing hinge.



Dual durometer PVC seal. Rigid section of seal forms cap at top of door to strengthen top panel.

SPECIFY WHITING **COLDSAVER** DOORS. They are designed especially for use on trucks and trailers carrying goods at extremely low temperatures (below 20°F/-7°C). There are no fasteners or aluminum connectors through the door to conduct heat or cold. You can be completely confident with the Whiting **COLDSAVER**, for low temperature control!

Standard Features:

- Aluminum facing inside and out for easy cleaning and excellent acceptance of paint and decals.
- No rivets on face of door to interfere with lettering or decals.
- Foam-in-place urethane insulation.
- Panel joints are double sealed.
- Rigid bottom channel has thermal break for entire width.
- 2 cable balancer with independent spring for each cable. Springs treated with rust preventative.
- All rollers can be easily changed without removing hinges.
- All door hardware E-COATED. (Automotive quality corrosion protection.)
- 4 rows of hinges.
- Pre-painted in standard white at factory.
- STAINLESS STEEL option includes all **COLDSAVER** door features plus stainless steel-faced panels.



General Offices:
113 Cedar Street
Akron, New York 14001
Phone: (716) 542-5427
FAX: (716) 542-5947

Rialto, CA
Phone: (909) 877-0120
FAX: (909) 877-9180

St. Louis, MO
Phone: (314) 741-6880
FAX: (314) 741-7450

e-mail
whitingdoor@webt.com

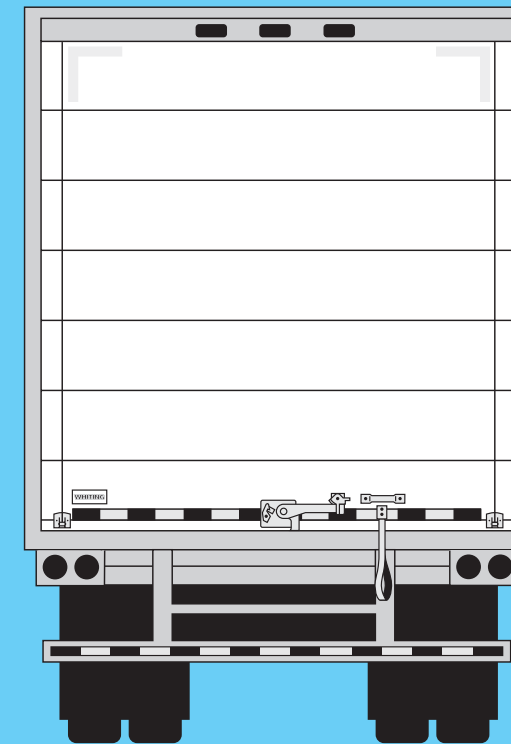
Visit the most informative site in the trucking industry on the web at www.whitingdoor.com

- Manufacturers of:**
SEA-LOK® Swing Doors
And these quality Roll-up Doors:
- Whiting PREMIUM
 - CARGOSAVER
 - COLDSAVER
 - TEMPGUARD
 - HINGELESS TRUSS
 - HINGED TRUSS
 - GENERAL PURPOSE
 - CARGOGUARD
 - EXTRUDED ALUMINUM



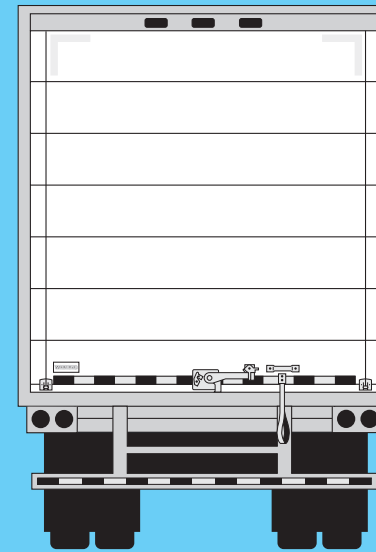
Whiting® ColdSaver roll-up door

For temperatures below 20°F/-7°C



Keeping things cold is child's play with Whiting ColdSaver roll-up doors.

Keeping things cold is child's play with Whiting ColdSaver roll-up doors.

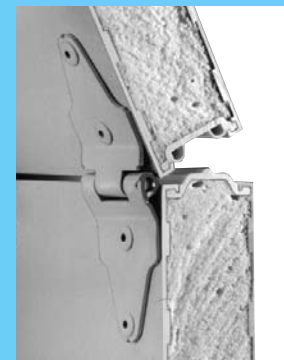


WHITING COLDSAVER Roll-Up Doors

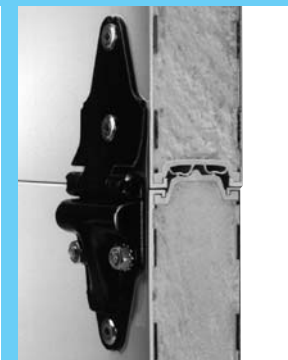
The Whiting ColdSaver Door is designed especially for use on trucks and trailers carrying goods at extremely low temperatures (below 20°F/-7°C). No other roll-up door built holds the cold like Whiting ColdSaver. It's the toughest insulated roll-up you can buy. It's practically maintenance-free. And it's a solid 37% more efficient in retaining cold than any other roll-up.

BRRRRR! CONSISTENTLY BRRRRR!

A few of Whiting's exclusive features:



PVC thermal break connects front and back of door. No thru-metal areas to conduct heat or cold through the door.



Panels foamed-in-place with urethane insulation. Each joint is double sealed.



Removable bottom roller bracket designed for easy roller replacement.



Heavy duty aluminum channel and flexible seal features a rigid landing surface to protect seal.

As the temperature inside the box goes up so do your operating costs.

The BTU's that don't get in don't have to be taken out. (Not to mention the risk of spoiled product.)



Heat removal costs, Whiting ColdSaver saves.